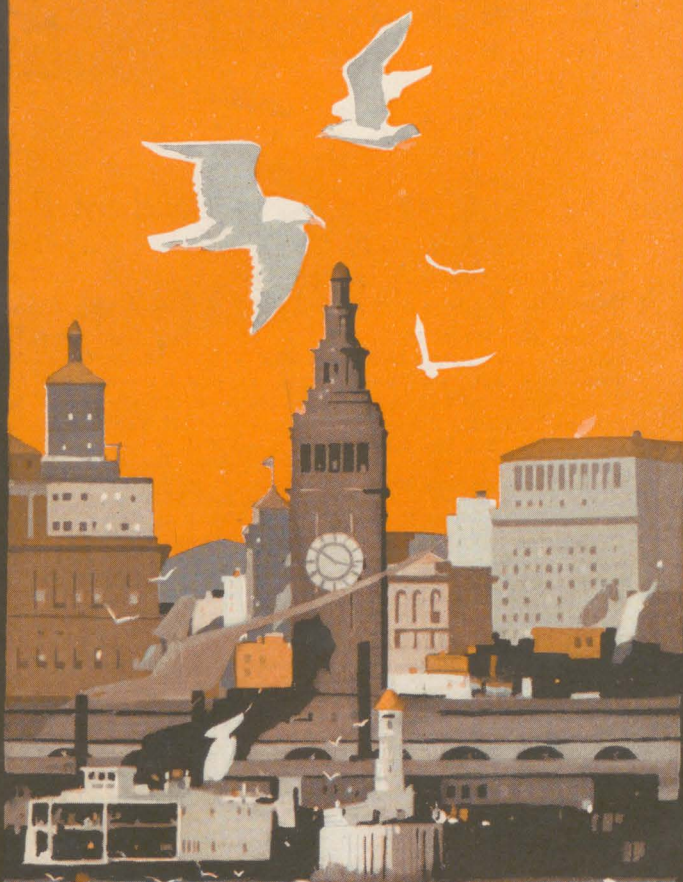


SUNSET ROUTE



SAN FRANCISCO

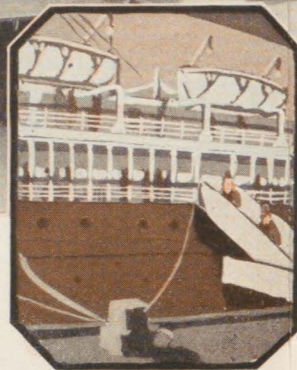
Southern Pacific Lines



Along the Sunset Route are found constant reminders that this was first the trail of Spanish adventurers. Old Spain's influence still lives in the life, color and architecture all along the way from New Orleans to Los Angeles and San Francisco.



It's the atmosphere of New Orleans that holds your interest



Where historic fact rivals fiction

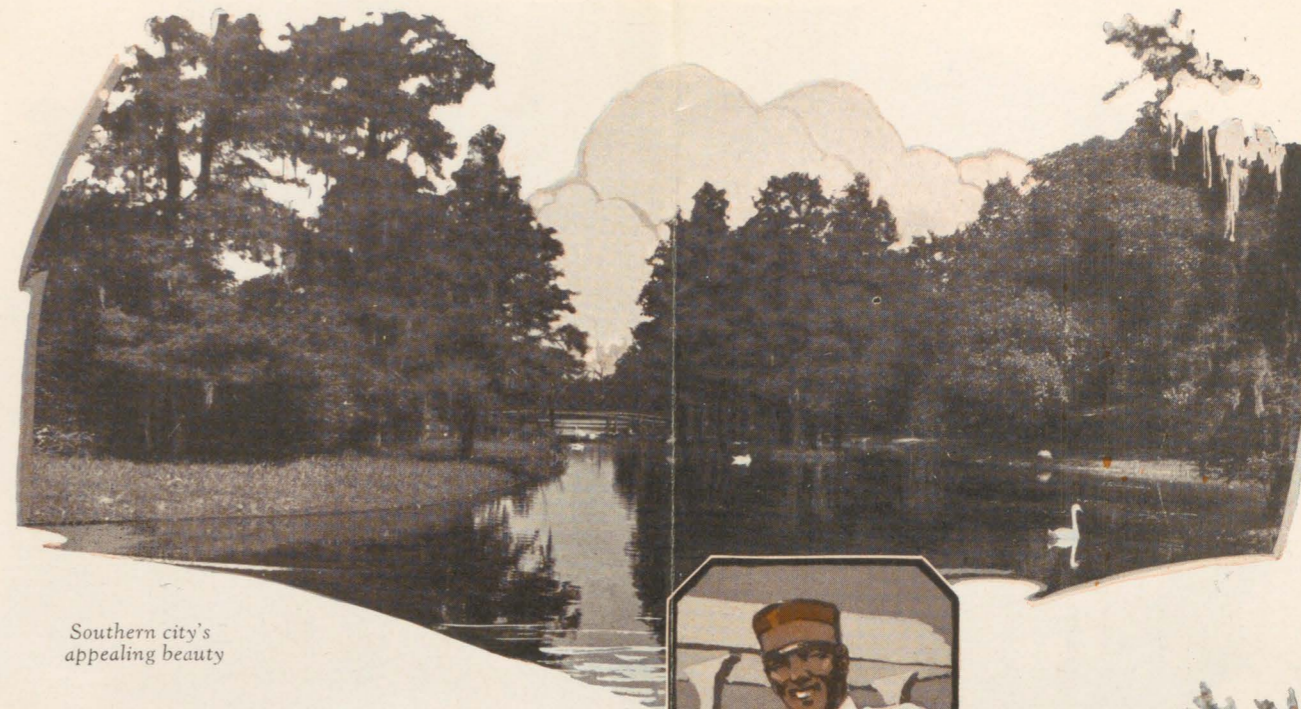
Sunset Route

New York New Orleans
 San Diego
 Los Angeles San Francisco

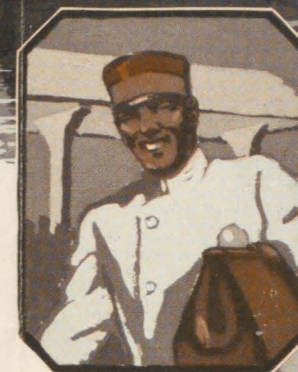
Southern Pacific's Sunset Route has color and romance. It links America's most distinctive, most truly cosmopolitan cities. And the Sunset Limited is a train famous among travelers round the world.

Between New York and San Francisco — a through transcontinental service by Southern Pacific Lines, unparalleled by any other.

Leave New York by Southern Pacific steamer and enjoy "100 Golden Hours at Sea" (meals and berth included in your fare). Southward along the Atlantic Coast, around Key West, across the Gulf of Mexico, through the Mississippi delta and up the river to New Orleans.



Southern city's appealing beauty



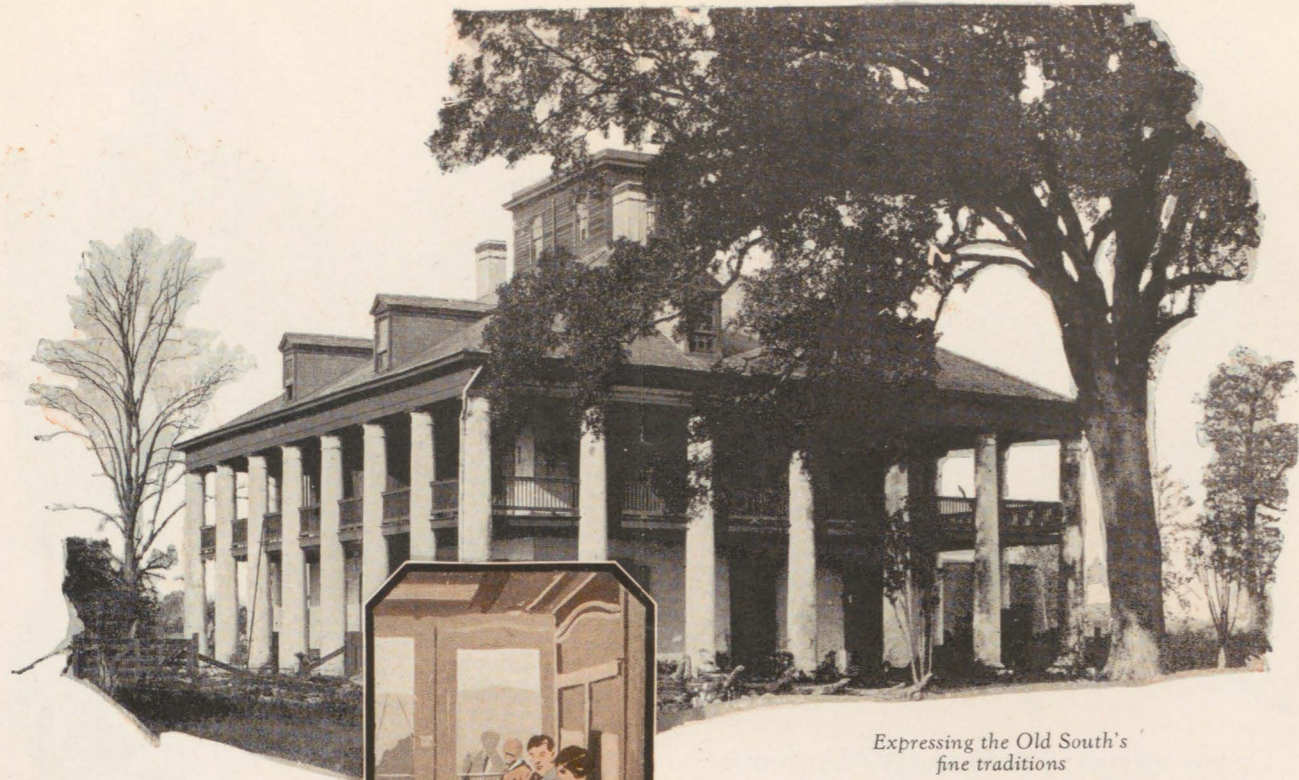
Shrines that inspire reverence

Or you may go by train via Washington and Atlanta (or Birmingham) through the plantation country of the Old South to that city of romance—New Orleans. Here is a seaport where history lurks in every nook and cranny. It is the true South, yet has a world atmosphere brought by the five flags under which it has lived.

Stately boulevards, aristocratic homes, old French Quarter, picturesque market places, quaint coffee shops—a city of the long ago, yet withal a progressive and prosperous business district.

At New Orleans you board the Sunset Limited or Argonaut, another excellent train, and start a trip unequalled for variety of interest and picturesque charm.

Across the Mississippi River and out through Louisiana. Plantations of cotton, rice and sugar. Live oaks and lazy bayous lend a touch of appealing beauty.



Expressing the Old South's
fine traditions



Now across Texas—great empire so broad that the previous day's Sunset Limited is leaving the State at one side as you enter at the other.

Houston, an inland seaport, made so by the Houston Ship Channel from the Gulf of Mexico. Beautiful homes. The Rice Institute. Nearby, the scene of the Battle of San Jacinto where the independence of Texas was won.

On to San Antonio. Here is the famous Alamo of Davy Crockett fame; the Mission de la Concepcion, built in 1731, and other missions beautiful in their old age. Medina Dam makes this city the center of great agricultural activity. Duncan Aviation Field, Kelly Aviation Field and Fort Sam Houston.

El Paso, gateway to Mexico and largest city on the Mexican border, with Juarez just across the Rio Grande. Here is a glimpse of Old Mexico



The whole family helps
at harvest time



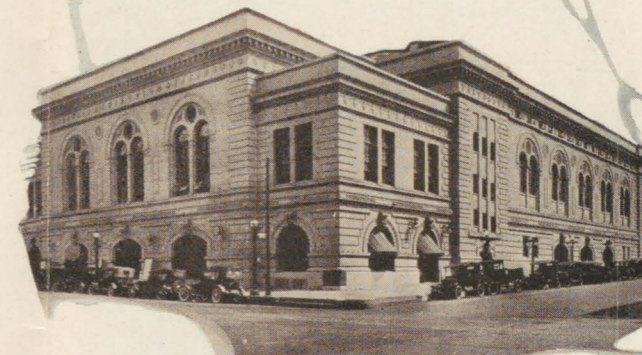
Great oaks and
Spanish moss

but five minutes' ride by trolley. El Paso is a distributing point of importance. Fort Bliss is located here. The great Elephant Butte Dam supplies water for irrigating the surrounding valley. Cloudcroft, a delightful summer resort atop the pine clad mountains, is just north of El Paso in New Mexico.

Then leaving the main line at Bowie, you may go to Globe, in the vicinity of which 41 per cent of the country's copper is produced. From Globe you may take the enchanting Apache Trail trip.

By motor stage you speed over 120 miles of boulevard through a most amazing scenic land.

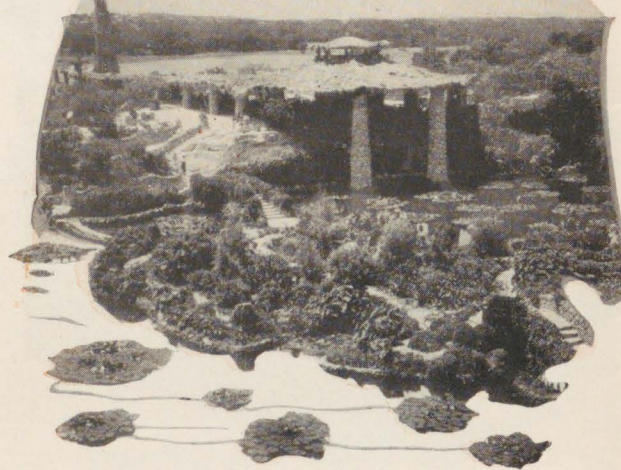
Great cliffs, rising sheer into the heavens. Ramparts and temples weirdly painted by passing ages. The cliff dwellings. The Roosevelt Dam and Lake.



Houston's
new Auditorium



Built when San Antonio was a Foreign Mission Field

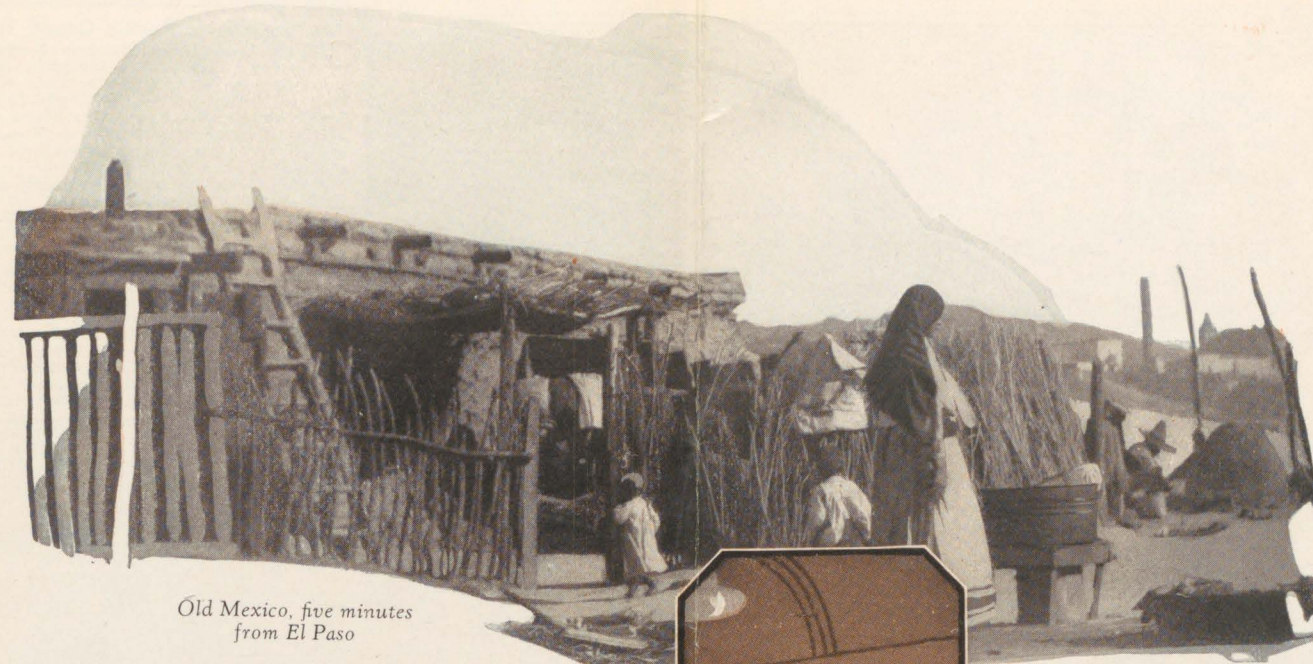


Sunken Gardens in San Antonio

Sixteen miles below Roosevelt Lake, Horse Mesa Dam, construction of which is to be completed by the summer of 1927, is creating another great body of water to be known as Apache Lake. Still lower down, Mormon Flat Dam has made Canyon Lake which extends back to Horse Mesa Dam. Completion of Horse Mesa Dam will give The Apache Trail a chain of lakes extending nearly 50 miles through the most gorgeous scenery in Arizona.

Suddenly from the wild country along the Trail you enter a lush valley which water has transformed from desert. Multiple crops, fertility, an unsurpassed growing climate and a prosperous, happy people. In the midst of this valley is Phoenix—aggressive, rich and growing.

A great sweep of rich new territory just opened for development as a result of the recent



Old Mexico, five minutes from El Paso

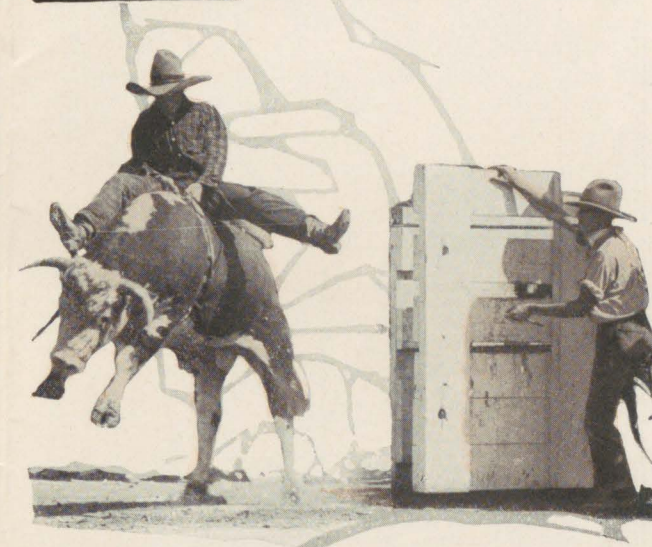


completion of a new Southern Pacific main line through Southern Arizona via Phoenix.

In Arizona you may stop to see the Casa Grande Ruins (prehistoric habitations); Mission San Xavier (near Tucson), worthy of more than passing notice; Tucson, gateway to the west coast of Mexico. (As this booklet was being printed—March, 1927—Southern Pacific was arranging for through service from California to Mexico City along the west coast of Mexico—via Tucson to Nogales, thence Southern Pacific of Mexico to Guadalajara, thence National Railways of Mexico to Mexico City.)

On through the "Far West," a fabled land, a story land, still a country of pioneers, still a frontier. Here are cowboys and Indians.

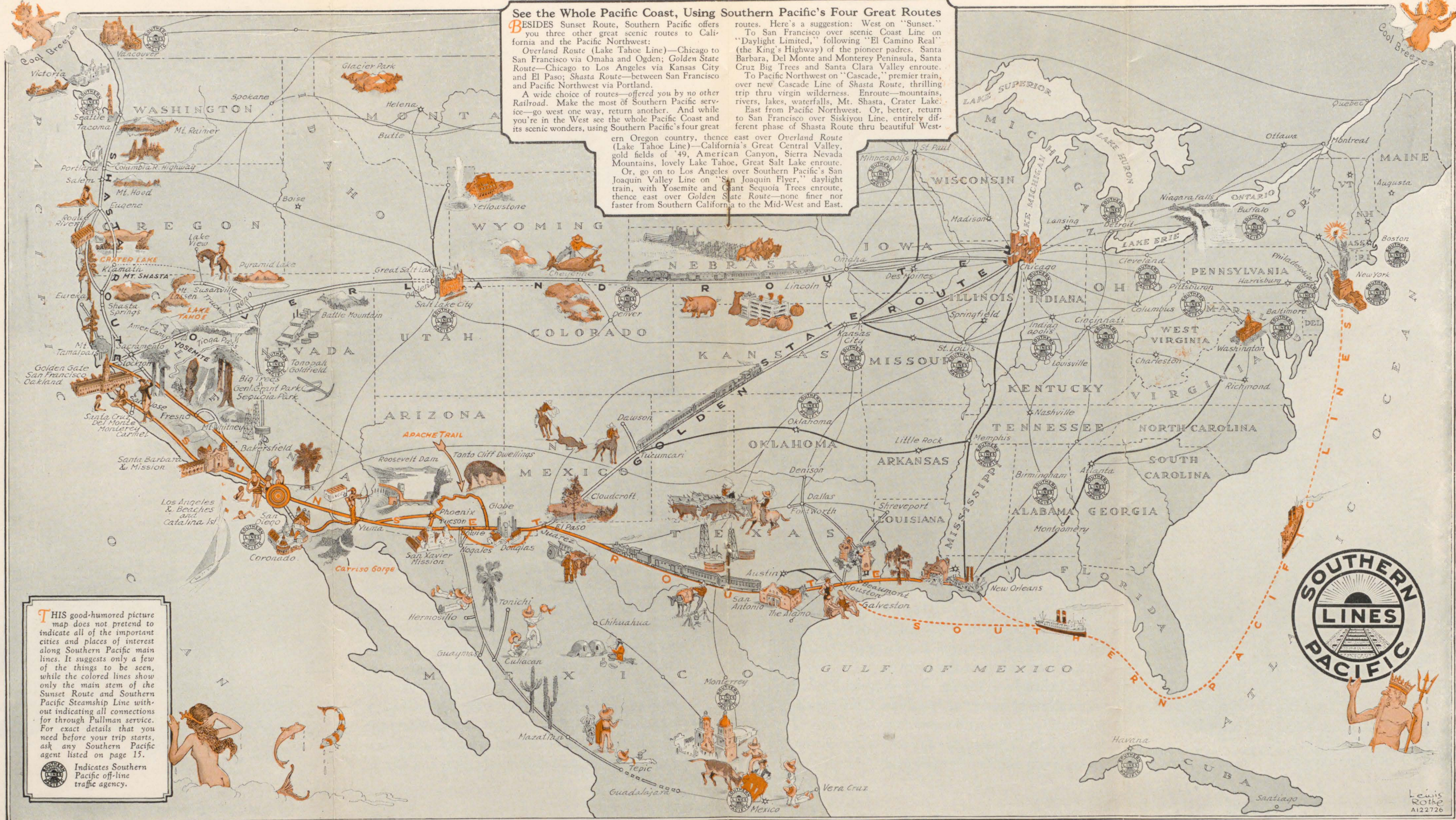
You may if you wish take the through car direct to San Diego and enjoy the Carriso Gorge trip. It is spectacular. Your train runs along the edge of a cliff, from the eminence of which you look down a sheer drop to the winding stream




Where the West is still wild

See the Whole Pacific Coast, Using Southern Pacific's Four Great Routes

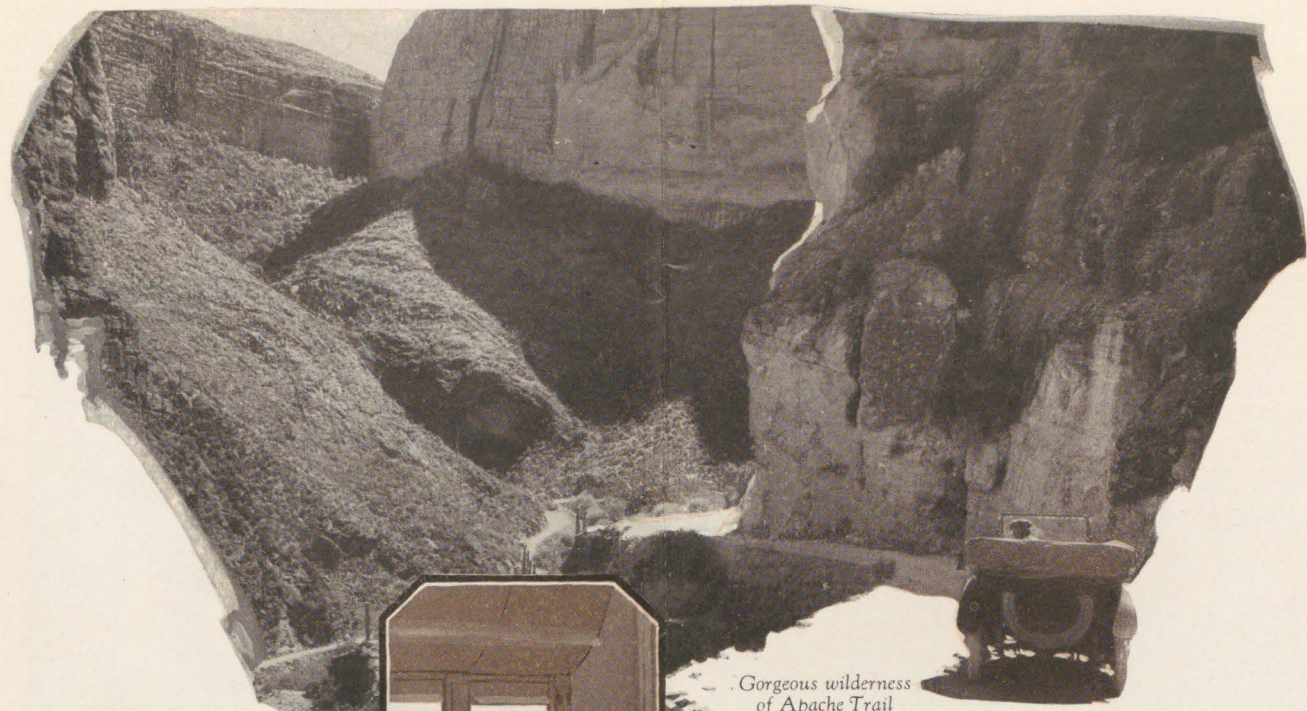
BESIDES Sunset Route, Southern Pacific offers you three other great scenic routes to California and the Pacific Northwest:
 Overland Route (Lake Tahoe Line)—Chicago to San Francisco via Omaha and Ogden; Golden State Route—Chicago to Los Angeles via Kansas City and El Paso; Shasta Route—between San Francisco and Pacific Northwest via Portland.
 A wide choice of routes—offered you by no other Railroad. Make the most of Southern Pacific service—go west one way, return another. And while you're in the West see the whole Pacific Coast and its scenic wonders, using Southern Pacific's four great routes. Here's a suggestion: West on "Sunset," To San Francisco over scenic Coast Line on "Daylight Limited," following "El Camino Real" (the King's Highway) of the pioneer padres. Santa Barbara, Del Monte and Monterey Peninsula, Santa Cruz Big Trees and Santa Clara Valley enroute. To Pacific Northwest on "Cascade," premier train, over new Cascade Line of Shasta Route, thrilling trip thru virgin wilderness. Enroute—mountains, rivers, lakes, waterfalls, Mt. Shasta, Crater Lake. East from Pacific Northwest. Or, better, return to San Francisco over Siskiyou Line, entirely different phase of Shasta Route thru beautiful Western Oregon country, thence east over Overland Route (Lake Tahoe Line)—California's Great Central Valley, gold fields of '49, American Canyon, Sierra Nevada Mountains, lovely Lake Tahoe, Great Salt Lake enroute. Or, go on to Los Angeles over Southern Pacific's San Joaquin Valley Line on "San Joaquin Flyer," daylight train, with Yosemite and Giant Sequoia Trees enroute, thence east over Golden State Route—none finer nor faster from Southern California to the Mid-West and East.



THIS good-humored picture map does not pretend to indicate all of the important cities and places of interest along Southern Pacific main lines. It suggests only a few of the things to be seen, while the colored lines show only the main stem of the Sunset Route and Southern Pacific Steamship Line without indicating all connections for through Pullman service. For exact details that you need before your trip starts, ask any Southern Pacific agent listed on page 15.

 Indicates Southern Pacific off-line traffic agency.

Sunset Route—By Rail and Sea—New York, New Orleans, El Paso, San Diego, Los Angeles, San Francisco



Gorgeous wilderness of Apache Trail



far, far below. The Carriso Gorge trip is an unforgettable adventure.

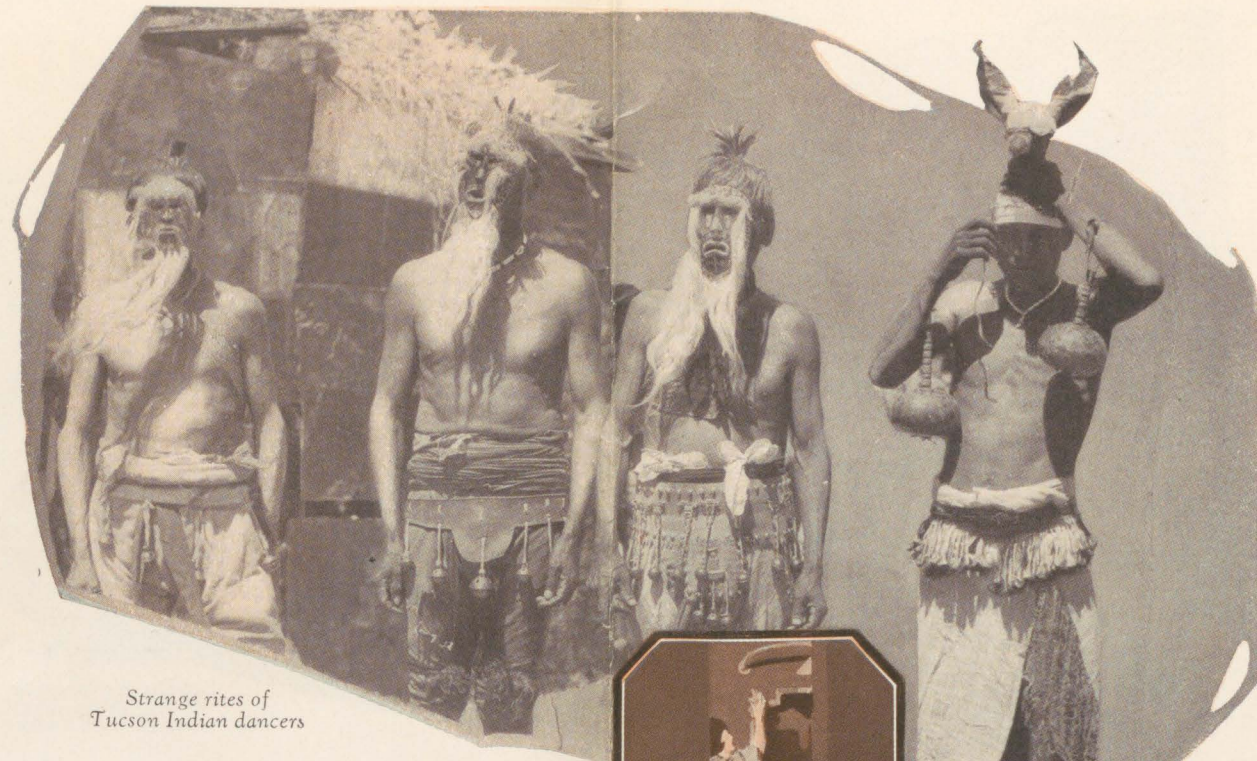
Continuing toward Los Angeles. The Imperial Valley where grow early fruits, vegetables and melons. It's a Garden of Eden where water and man have performed seeming miracles. Salton Sea, blue and deep, far below the level of the ocean. A veritable dead sea and strikingly picturesque.

Through the orange country into the California you have read about. Green groves, with trim trees in serried ranks. And always the background of mountains, some capped with snow. Clean, new-looking towns and cities, contrasting with ancient missions, dry arroyos.

And then Los Angeles. Los Angeles has the atmosphere of play, for Southern California is an alluring playground at any season. Yet here is a big city industrially and one of the fastest growing communities in the world. A home city,



Roosevelt Dam has made thousands of desert acres bloom



Strange rites of Tucson Indian dancers

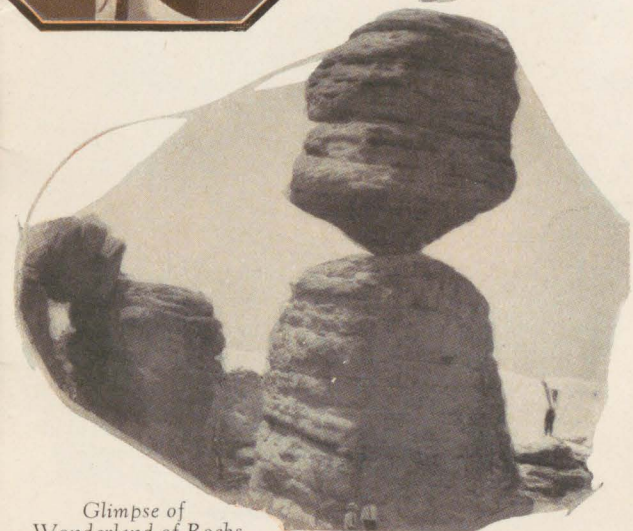


a resort city with a dozen famous beaches and many attractive mountain places nearby—including Hollywood, where "movies" are made.

Northward through green farms and orchards until with startling suddenness the ocean rushes to our side. One hundred and thirteen miles along the shore, mountains to the right, the Pacific to the left.

Lovely, alluring Santa Barbara and Montecito. Many others, including Ventura, Ojai, San Luis Obispo, Paso Robles. Salinas, where the California Rodeo is held. And then Del Monte Junction, from which one may go to the Monterey Peninsula, that region so like the fabled principalities of popular fiction. Del Monte, world famous for golf and other sports; Carmel, the artists' colony; The Highlands; Pacific Grove; Monterey, first capital of California, a place of historic charm.

You enter the great garden of the Santa Clara



Glimpse of Wonderland of Rocks



San Diego's venerable relic of long ago



Valley, come to San Jose and rush up the Peninsula to San Francisco, beside the Golden Gate.

Or if you prefer you may travel north from Los Angeles on the San Joaquin Valley line, crossing the Tehachapi mountains over the famous loop, a railroad engineering feat, and drop into the San Joaquin Valley at Bakersfield. Here are vast oil fields, farms and range lands. Northward up the broad, fertile valley through Fresno, famous for its raisins, and summer gateway to Yosemite Valley; through Merced, year-round gateway to Yosemite; on to Port Costa and along San Francisco Bay through Berkeley to Oakland. Here you take a ferry across San Francisco Bay, one of the world's greatest land locked harbors, to—

San Francisco—gleaming upon the hills. A city full of life and color. A world trade center. Cosmopolite—yet San Francisco is truly American and proud of her traditions.



Los Angeles—City of Homes among the palms



Santa Catalina Island—a nation's deep sea playground



"Famed Round the World"

THE moment you board the Sunset Limited at New Orleans you will be impressed by the quality of your train.

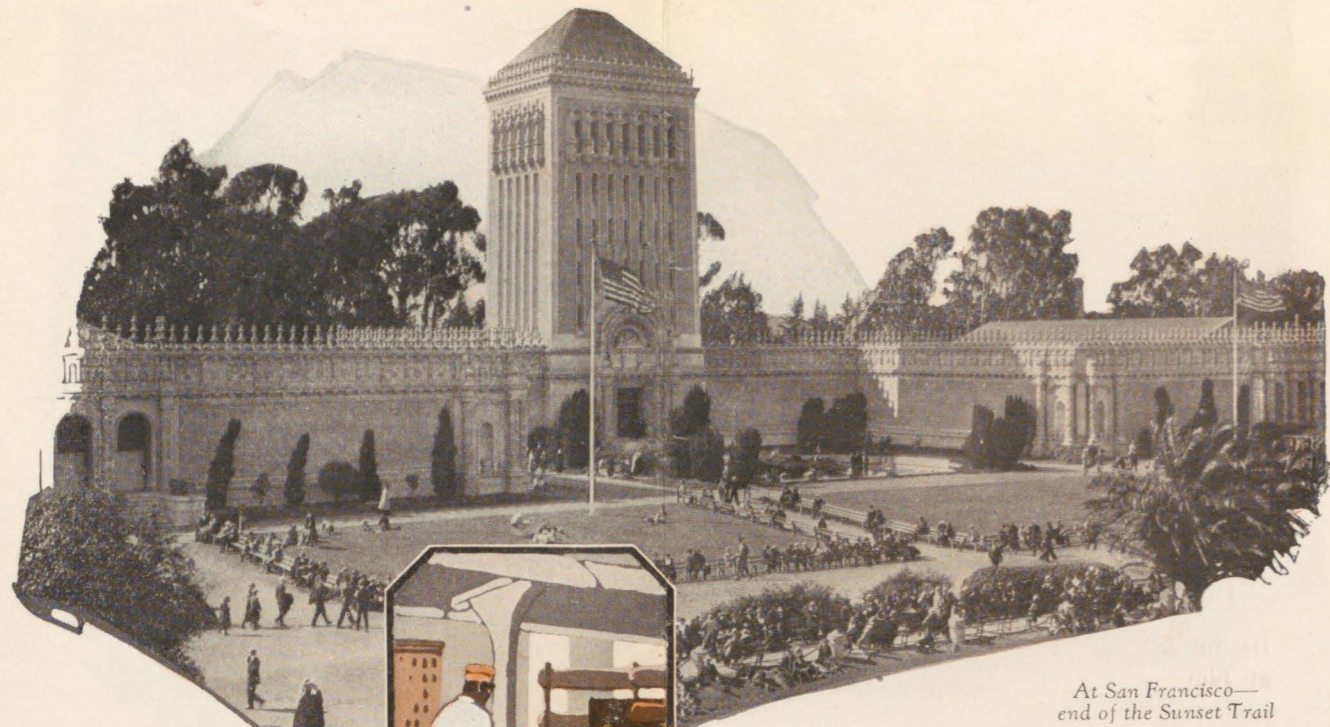
Newest developments in Pullman equipment. Those seemingly small refinements that mean added comfort. And at no extra fare. An Observation Car that is roomy, with a writing desk, a library of selected periodicals, lounge chairs and an outdoor platform. There is a retiring room and shower for women, with a maid in attendance for shampooing, manicuring and hair-dressing, and to help with the children.

The Club Car for men has a barber and valet, a shower, deep leather chairs, a porter to serve soft drinks and fruit juices.

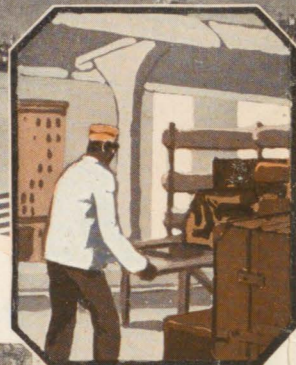
A Southern Pacific dining car guarantees the quality of the meal service. Spotless linen, made



Charming Santa Barbara



At San Francisco—
end of the Sunset Trail



in Belfast, Ireland, especially for Southern Pacific; polished silver and sparkling glasses.

Quiet, efficient waiters. Chefs who are artists. Menus which are varied and inviting. The finest food products of the West and South. Fresh fruits and vegetables, choice cuts of meat, light desserts—all stimulate the appetite and reward it with excellence.

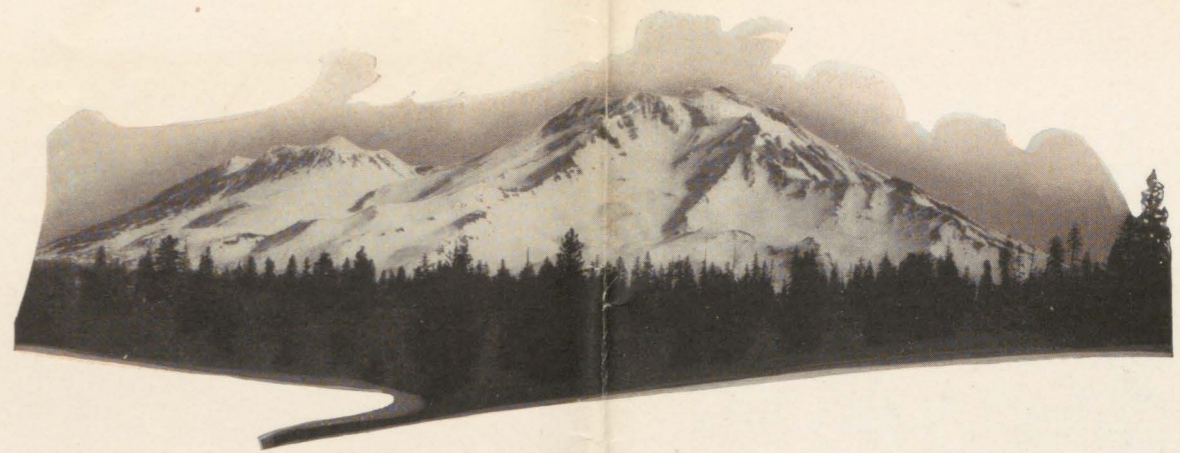
Then note the check. It is lower than the cost of similar service at any first-class hotel or restaurant. That is the final service.

The men in charge of this train are skilled and courteous. Southern Pacific men have unbounded enthusiasm for their railroad. They recognize its traditions, its pioneering feats, its strength and its efficiency. And, too, they are proud of the premier train, Sunset Limited, "famed round the world."

You will enjoy this finest train over a great route to California.



Quaint Chinatown



Mt. Shasta marks the Shasta Route, the Southern Pacific way to the Pacific Northwest

Southern Pacific Representatives

Your nearest Southern Pacific agent will give you full information as to passenger fares, Pullman reservations, time schedules, etc. If you wish, he will gladly call at your office or home and help you arrange your trip, or help you with freight shipment. He will also attend to such details as tickets, Pullman and hotel reservations, etc., for you. Phone or write him.

ATLANTA, GA., 319-320 Healey Bldg.	D. Asbury, General Agent	MINNEAPOLIS, MINN., 1020 Metropolitan Life Bldg.	J. H. Desherow, General Agent
BALTIMORE, MD., 206-7-8 Union Trust Bldg.	W. B. Johnson, General Agent	MEXICO CITY, MEX., Avenida Cinco de Mayo, No. 32	F. V. Stark, General Agent
BIRMINGHAM, ALA., 406 Woodward Bldg.	S. J. Brown, General Agent	MONTERREY, MEX., Langstroth Bldg., Escobedo and Padre Mier Streets	Alfonso Marquez, General Agent
BOSTON, MASS., 294 Washington St., Room 209	E. S. Leavitt, General Agent	NEW YORK, N. Y., N. E. Cor. 5th Ave. & 44th St.	Southern Pacific Uptown Ticket Office
BUFFALO, N. Y., 223 Ellicott Square Bldg.	G. H. Vogel, General Agent	NEW YORK, N. Y., 165 Broadway	H. H. Gray, Gen. Agt., Passenger Dept.
CHICAGO, ILL., Sou. Pac. Bldg., 33 West Jackson Blvd.	A. C. Hedlund, Gen. Agent, Pass. Dept.	OKLAHOMA CITY, OKLA., 909 Colcord Bldg.	J. A. Eads, General Agent
CINCINNATI, OHIO, 206 Dixie Terminal Bldg.	Robt. McDowell, General Agent	PARIS, FRANCE, 3 Rue Tronchet	H. Desmidt, General Agent
CLEVELAND, OHIO, 1116 Hippodrome Bldg.	E. G. Cook, General Agent	PHILADELPHIA, PA., 706-7 Packard Bldg.	F. T. Brooks, General Agent
DENVER, COLO., 303-304 Boston Bldg., 17th and Champa Sts.	E. H. Williams, General Agent	PITTSBURGH, PA., 1312 Park Bldg.	H. F. Starke, General Agent
DETROIT, MICH., 203-205 Majestic Bldg.	W. W. Hale, General Agent	ROME, ITALY, Piazza de Spagna, 28	Brizzolesi, Kemsley & Millbourn, General Agents
GENOA (4), ITALY, Via Roma 8a	Brizzolesi, Kemsley & Millbourn, General Agents	SALT LAKE CITY, UTAH, 41 South Main St.	Press Bancroft, General Agent
HAMBURG, GERMANY, 18 Glockengiesserwall	G. Ruhr, General Agent	SAN FRANCISCO, CAL., 65 Geary St.	C. J. Sundberg, District Passenger Agent
HAVANA, CUBA, Room 307 Manzana de Gomez (Central Park)	R. Menendez, General Agent	SEATTLE, WASH., 314 Union Street	B. C. Taylor, General Agent
INDIANAPOLIS, IND., Merchants Bank Bldg.	Lyon Liston, General Agent	ST. LOUIS, MO., Sou. Pac. Bldg., 312-314 No. Sixth St.	L. B. Banks, General Agent
KANSAS CITY, MO., Railway Exchange Bldg.	F. W. Sedgwick, General Agent	TURIN, ITALY, Via La Grange, 23	Brizzolesi, Kemsley & Millbourn, General Agents
LIVERPOOL, ENGLAND, 21 Water Street	R. G. Bonsor, General Agent for Great Britain	VANCOUVER, B. C., 585 Granville St.	E. J. Hendry, Canadian General Agent
LONDON, ENGLAND, 49 Leadenhall Street	R. G. Bonsor, General Agent for Great Britain	WASHINGTON, D. C., 400 Southern Bldg.	A. J. Poston, General Agent
LOS ANGELES, CAL., Pacific Electric Bldg.	H. P. Monahan, District Passenger Agent	WASHINGTON, D. C., 1510 H St. (N.W.)	G. V. McArt, Agent, Washington-Sunset Route
MEMPHIS, TENN., Exchange Bldg.	L. C. Bouchard, General Agent		
MILAN, ITALY, Via Durini, 34	Brizzolesi, Kemsley & Millbourn, General Agents		

C. S. FAY, Traffic Manager Louisiana Lines, New Orleans, La.	E. W. CLAPP, Traffic Manager, Chicago, Illinois	C. K. DUNLAP, Traffic Manager Texas Lines, Houston, Tex.
J. T. MONROE, General Passenger Agent, New Orleans, La.	H. LAWTON, Traffic Manager Mexican Lines, Guaymas, Mex.	W. C. McCORMICK, General Passenger Agent, Houston, Tex.
E. J. FENCHURCH, Gen. Freight and Passenger Agt., Tucson, Ariz.	JOHN M. SCOTT, Asst. Passenger Traffic Manager, Portland, Ore.	WM. SIMMONS, Traffic Mgr., S. P. S. Lines (Morgan Line), New York, N. Y.
		J. D. MASON, General Passenger Agent, El Paso, Tex.
		C. L. McFAUL, Asst. Passenger Traffic Manager, Los Angeles, Cal.
		F. C. LATHROP, Asst. Passenger Traffic Manager, San Francisco, Cal.
		F. S. MCGINNIS, Passenger Traffic Manager, San Francisco, Cal.
		SAN DIEGO & ARIZONA RAILWAY, F. B. DORSEY, Traffic Manager, San Diego, California

PRINTED IN U. S. A.

Copyright, 1927, Southern Pacific Lines

A-62 (3-31-27-50M)

SUNSET ROUTE



NEW ORLEANS

Southern Pacific Lines