

A FOURTEEN DAY TRIP

for

\$99⁵⁰



THROUGH
THE GREAT SOUTHWEST AND THE GULF COAST COUNTRY OF TEXAS



A Two Weeks' Trip
to
The Wonderful
Gulf Coast Country of Texas
and Return

INCLUDING CITIES OF NORTHERN TEXAS, HISTORICAL
SAN ANTONIO AND POINTS IN THE RIO GRANDE
VALLEY; ALSO A TRIP ACROSS
THE RIO GRANDE TO
OLD MEXICO

LEAVES ST. LOUIS 11:20 P. M., FEBRUARY 20, 1912
RETURNING, ARRIVE ST. LOUIS, MARCH 5, 1912

Conducted Personally by
MR. H. R. GREGORY

TRAVEL SERVICE BUREAU
H. R. GREGORY, PRESIDENT AND GENERAL MANAGER
1358 PIERCE BUILDING, ST. LOUIS, MO.

PURPOSE OF THIS TRIP

This tour of the wonderful Gulf Coast Country of Texas, which has attracted the attention of the people of the entire United States during the past few years, has been arranged for the purpose of affording the most convenient way of viewing the marvelous growth of the cities, the wonderful crops and the places of interest along the Gulf of Mexico, and in the Rio Grande Valley. This trip affords the maximum amount of benefit at the minimum cost and the homeseeker looking for a new home, the investor desiring an opportunity for safe and profitable investment, the business man on the lookout for new trade territory, or the Tourist cannot make any better use of his time and money than making this trip with our party. It should be understood that all the details of the journey and necessary arrangements are taken care of in advance, by the experts of the Travel Service Bureau and there is not one single thing to worry about or to look after.

OUR SPECIAL TRAIN

Our special train over the Frisco Lines will be complete in every detail. The standard Pullman drawing room sleeping cars will be electric-lighted and have individual berth lights; the dining car will be in the train all of the time and there will be no meals missed and no waiting for meals; the baggage car

will also be in the train all of the time and your personal baggage will be accessible at any time. This splendid train will insure a trip of comfort and pleasure. The schedule is so arranged that the beauties of the Boston Range of the Ozark Mountains in North-west Arkansas may be seen by daylight on the going trip, and the beautiful Ozarks along the Gasconade and Meramec Rivers of Missouri may be seen on the return trip.

COST OF TOUR, \$99.50

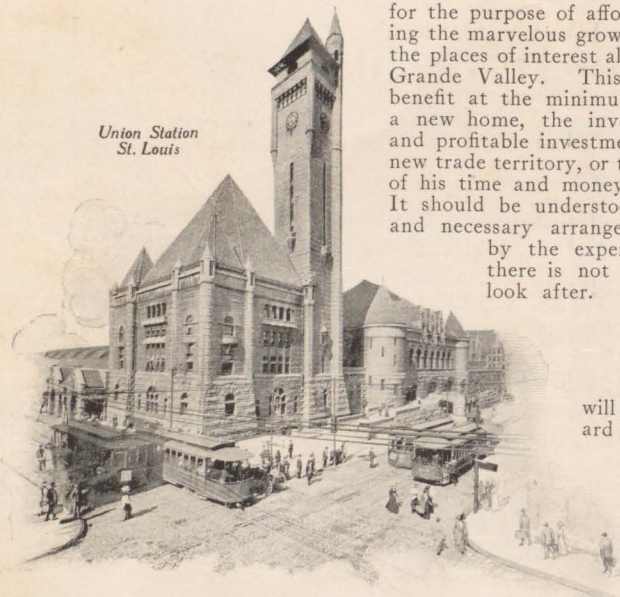
Including round trip transportation, meals in dining cars, meals at hotels, side trips, automobiles and one-half lower or one entire upper berth in Pullman Standard drawing room sleeper, \$99.50.

DEPOSIT

Make a deposit of \$10.00 and secure reservations by applying to Travel Service Bureau, H. R. Gregory, President and General Manager, Room 1358, Pierce Building, St. Louis, Mo., Telephones, Main 3360, Central 3610; or F. J. Deicke, General Agent, Passenger Department, Frisco Lines, Frisco Ticket Office, 900 Olive St., St. Louis, Mo.

BAGGAGE

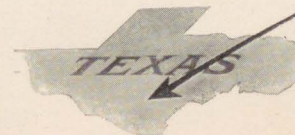
During the trip we will pass from midwinter to summer, from ice and snow of the North to the springtime of the Gulf Coast of Texas and it will be necessary to take your trunk, with various changes of clothing. All baggage will be carried in our private baggage car and will be accessible at any time during the trip.



Union Station
St. Louis

Where Start is Made

When you look
to the future—



Look Southwest!

Cotton Exportation
Texas Gulf Coast



SLEEPERS

As we will have a special train of luxurious Pullman Standard sleepers and will travel on special schedule, we will occupy our sleepers at night during tour. An additional charge of \$10.00 will be made where one person occupies an entire lower berth, but no extra charge will be made when passenger occupies an entire upper berth or one-half of lower berth.

DINING CAR

We carry a private dining car with us on entire trip and as all meals will be served "a la carte," you will be allowed a credit of 75c for each meal. Any additional amount may be paid by you to dining car conductor.

SIDE TRIPS

- Automobiles at Dallas.
- Railroad, Houston to Galveston and return.
- Automobiles at Galveston.
- Railroad, Buckeye to Collegeport and return.
- Railroad, Bloomington to Port O'Connor and return.
- Railroad, Robstown to Corpus Christi and return.
- Automobiles at Brownsville.
- Motor Car, Brownsville to Matamoros (Mexico) and return.
- Railroad, Brownsville to Point Isabel and return.
- Automobiles at San Antonio.
- Automobiles at Houston.
- Automobiles at Fort Worth.
- Sight-seeing trips and automobiles at other points.



Hotel Galvez



Galveston Sea Wall

GENERAL INFORMATION

Every arrangement has been completed to make this tour first-class in every particular.

While Mr. Gregory will personally conduct the party, each railroad interested will have a representative on the train who will assist in entertaining the party, as well as giving authentic information en route, and distributing illustrated literature.

Special courtesies and attention will be shown ladies traveling alone, and ladies need not hesitate to join this party.

Telegrams and letters to members of party will be promptly delivered if senders consult schedule and send same "Care Frisco Lines Special Tour Party."

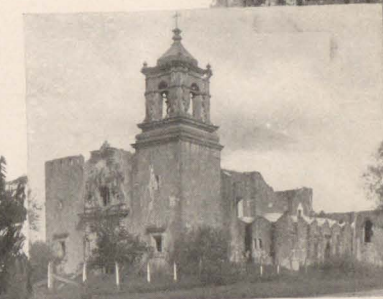
Everyone should read "The Mid-Coast Country of Texas," "Irrigation in the Gulf Coast Country of Texas" and "The Summer Time of Winter." These three publications are issued by the Passenger Traffic Department, Frisco Lines, and will be sent on request free of charge by addressing A. Hilton, General Passenger Agent, Frisco Lines, St. Louis, Mo.

We have programs arranged at various points of interest



Along the Texas Gulf Coast

Entrance San
Jose Mission



San Jose Mission

where we stop over en route, and many of the cities have asked for the privilege of entertaining us.

It is important that you **return to the train promptly**, for our special will run on schedule time and it will be very inconvenient to you to be left.

DAILY ITINERARY

TUESDAY, FEBRUARY 20

We leave St. Louis, at 11:20 p. m., on through "Frisco" Palatial Special Train, consisting of private Pullman Standard drawing room sleepers, private dining car and private baggage car.

WEDNESDAY, FEBRUARY 21

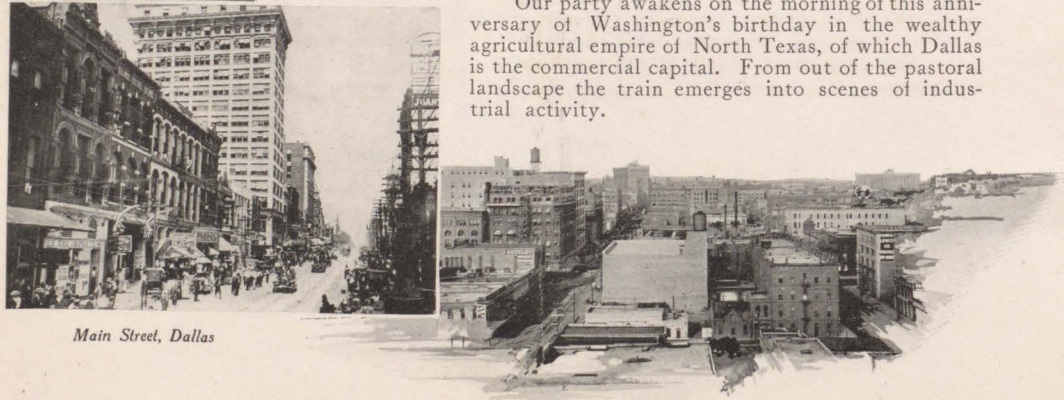
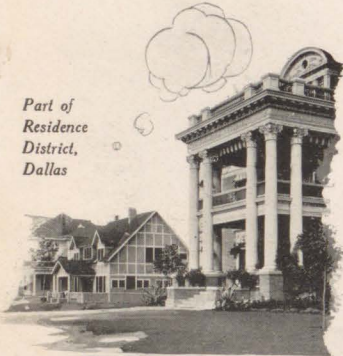
We pass through the picturesque Ozark Mountains of Southwestern Missouri and Northern Arkansas, spending a few hours at Springfield, Mo., and Ft. Smith, Ark.

THURSDAY, FEBRUARY 22

Dallas

Our party awakens on the morning of this anniversary of Washington's birthday in the wealthy agricultural empire of North Texas, of which Dallas is the commercial capital. From out of the pastoral landscape the train emerges into scenes of industrial activity.

Part of
Residence
District,
Dallas



Main Street, Dallas

Part of Business Section, Dallas

Dallas is built upon the high smooth prairie that borders the Trinity River. It is a city of grace and beauty as well as strength and energy.

By automobile or carriage, we will visit the fashionable residence districts of Munger Place and Highland Park, where will be seen some of the most spacious of Southern homes.

At 9:30 p. m. the party will again board their special train, and another "sleep" will transport them to the sunny shores of the Gulf of Mexico.

FRIDAY, FEBRUARY 23

Galveston

Just after the Pullman porter raps upon the berth to summon its occupant from slumberland, the speeding train leaves the main land and, crossing the bay upon a trestle alongside of the wonderful new concrete causeway that seems to literally bridge the ocean, lands us in the island city of Galveston—built upon a foundation of rock and fortified by miles of formidable sea wall.

All day and half the night is to be spent in Galveston and there are many features to interest the visitor. One comes to Galveston to see the water, the ships, the bathing and the fishing, and goes away to talk of the sunshine and flowers.

Palm Tree,
Texas Gulf
Coast



Mexican Water Cart



Post Office, San Antonio

Ocean Vessels
Texas
Gulf
Coast



During the sojourn in Galveston an automobile drive will be made along the four miles of sea wall boulevard. Here is the bulwark that has been thrown up to protect the city from the sea, a work involving many millions of dollars and requiring the talent of the world's greatest engineers. On this drive is located the million dollar Hotel Galvez, where we make our headquarters. Galveston has a population of 36,981.

The arrangements of the itinerary permit an evening as well as a morning and afternoon programme at Galveston. Those who go sailing in the morning and motoring in the afternoon may spend the evening indoors at some of the theaters, music halls or cafes, which are at their gayest after sundown.

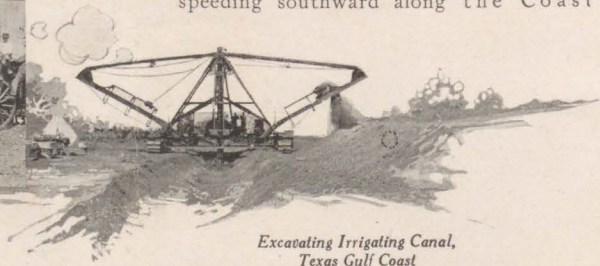
After the night's festivities are over the tourists will return to the comfortable sleepers, which will be conveniently parked at the railroad station.

SATURDAY, FEBRUARY 24 Chocolate Bayou

Two hours—from 6 to 8 a. m.—will be spent at Chocolate Bayou, one of the new and thrifty towns that has grown up with the development of the fruit and farming industries along the Brownsville line. Chocolate Bayou is only 1 year old but has 200 people. We are now speeding southward along the Coast



Shipping Bermuda Onions,
Texas Gulf Coast



Excavating Irrigating Canal,
Texas Gulf Coast

through green fields, strawberry gardens and young orange orchards. It is spring time in this beautiful land. The fruit and garden truck is being gathered and shipped from every station.

Brazoria

Crossing the Brazos River, the party arrives, at 9:10 a. m., at Brazoria, the oldest incorporated town in Texas. It is one of the richest valleys in the world. The wild lands are covered with a thick mass of vines and trees and here the hunters come in quest of bear, deer, turkeys and all manner of wild game. Before the war some of the largest cotton plantations were in the lower Brazos Bottoms. More recently the land has been put in cane, rice and corn. The visitor will see the scores of new farms that have been opened in the "jungles." Brazoria has 800 people.

Bay City

Forty-five minutes is hardly enough time for a sight-seeing tour of Bay City, with its 4,000 or 5,000 people, but the time, though limited, will be interesting. This is the seat of Matagorda County. In the immediate vicinity of Bay City are 75,000 acres of irrigated lands, mostly in rice. The source of the water supply is the Colorado River.

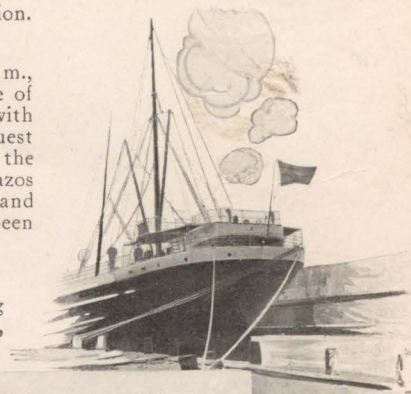
Collegeport

In the afternoon a run will be made over

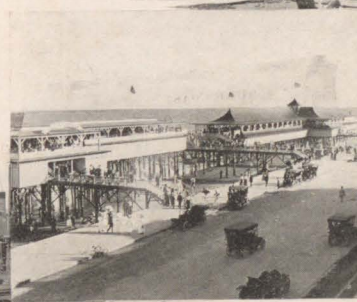


Loading Ships at Elevator, Texas Gulf Coast

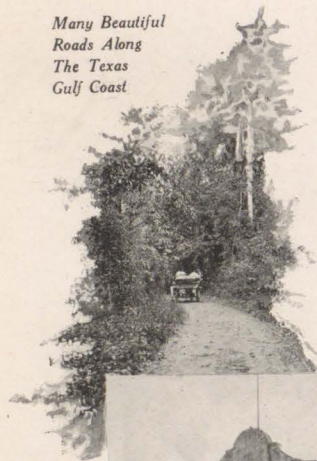
Wharf Scene, Texas Gulf Coast



Along
Beach
Boulevard,
Galveston



Many Beautiful
Roads Along
The Texas
Gulf Coast



the branch line, from Buckeye to Collegeport, on Palacios Bay, one of the prettiest of Gulf Coast residence cities. The route lies partly through the great Pierce ranch, where herds of pure-bred Herefords and imported "holy cattle" may be seen grazing beside the railroad. There are large rice fields in this section, and irrigation is used for the production of other crops. Hunting and fishing are popular pastimes for those who make their winter sojourns in the region of Collegeport. Collegeport is only 2 years old, with a population of 500.

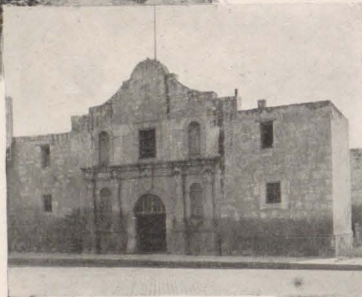
Blessing and Francitas

Back on the main line of the Brownsville road, the next stop is made in the late afternoon at Blessing and Francitas, the former at a prominent railroad junction point, and both in the irrigated garden district in which group of towns are included Bay City and Collegeport. Where once only the cattle roamed there are now hundreds of farms and gardens. Blessing is 2 years old and Francitas is 1. The former has a population of 400 and the latter, 250.

SUNDAY, FEBRUARY 25

Port O'Connor

At Bloomington the train will again leave the main line for Port O'Connor, whence the



The Alamo



Hauling Corn,
Texas Gulf Coast

ride will be made at night. Arriving at Port O'Connor at 9 p. m.

Arising, the visitor may, on the site of the large tourist hotel, see the spot where landed one of the first expeditions of explorers on the Gulf Coast. It is located on the extreme point of a peninsular, with three water fronts and is called the sportsmen's paradise. There are several pleasant winter trips that may be made from Port O'Connor, but the time at the disposal of the party will limit the programme to local features, which include the bathing beach. Port O'Connor is 2 years old and has a population of 400.

Seadrift

Leaving Port O'Connor at 9 a. m., Sunday, a thirty minute stop will be made at Seadrift, which lies on the bay front about midway between Port O'Connor and Bloomington. Seadrift is conspicuous for its many fine farms and gardens. It has wharves and there is a large traffic by rail and boat, in products of the farm, as well as in game and fish. Between Port O'Connor and Bloomington is one of the largest fresh water lakes in Texas. Seadrift is 2 years old and has a population of 350.



Marketing Onions, Texas Gulf Coast

Huge Palms, Texas Gulf Coast



Park Scene,
Texas Gulf Coast

Rosenberg Monument,
Galveston



Bloomington

Returning to Bloomington from Port O'Connor and Seadrift at 11:20, Sunday morning, the tour southward is resumed. Bloomington is one of the new towns that has come into existence since the opening of the Brownsville line. Bloomington has 200 people. Is 2 years old.

Sinton

Following lunch, after an interesting two hours of travel through the most beautiful landscape of the upper Coast region, the town of Sinton is reached. South of this point is the big Taft ranch, owned by the brother of President William H. Taft, to which the Chief Magistrate of the nation makes frequent pleasure and hunting excursions. There are fine gardens and many big cotton farms in Sinton district. Sinton has a population of 1,500 and is 5 years old.

Robstown

After crossing the Nueces River and climbing again to the high prairie lands, Robstown is reached. This is the junction point from which a side trip is made to the magnificent tourist city and pleasure resort of Corpus Christi, on Corpus Christi Bay, sixteen miles distant. Robstown with its brick stores, industries, school



Park Scene, San Antonio



Automobile Races, Galveston

houses and churches is an example of rapid city building, not often equalled. There was no Robstown until the Brownsville line came. Robstown is 3 years old and has a population of 600.

Corpus Christi

Arriving in Corpus Christi at 4:30 p. m., Sunday, the tourist party will have until 5 a. m., Tuesday morning to view the sights and enjoy the pleasures of the premier tourist resort of the Gulf Coast. Corpus Christi is a city of white houses, nestling upon a green fringed bluff that overlooks a wide, blue ocean.

Here there are many tourist hotels, some of them on the bluffs, some by the side of the sea and others literally built out over the bay, to be reached by piers. The largest and newest of these is the Corpus Beach Hotel which will be completed by the time our party reaches Corpus Christi. The bathing beach is one of the finest on the Coast and this trip is none too soon to see the bathers at their sport. The facilities for fishing are the very best and those who wish to visit the haunts of the sportive tarpon may start their quest from the Corpus Christi Wharf. There are many pleasant boat trips that can be taken from this point.

Corpus Christi entertains many thousand visitors every season. The tourists come winter and summer, and her

Dale Palms
Texas Gulf Coast



Rio Grande River at Matamoros



Corpus Beach Hotel

*Luxuriant Palms
Texas Gulf Coast*



hotels, parks and places of amusement are always open. Corpus Christi has a permanent population of more than 8,000.

MONDAY, FEBRUARY 26

Spend the entire day and night at Corpus Christi.

TUESDAY, FEBRUARY 27

Bishop

Midway between Robstown and Kingsville a stop of one hour and a half will be made at Bishop, where visitors will have an opportunity to see the agricultural activities which are transforming a cattle country into one of the world's garden spots. Bishop is 1 year old and has 300 people.

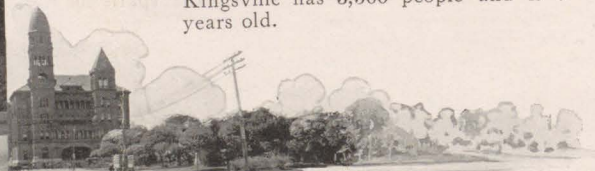
Kingsville

At Kingsville are the headquarters and home of Mrs. H. M. King, who owns and operates one of the largest cattle ranches in the world. Located here also are the offices and headquarters of the St. Louis, Brownsville and Mexico Road of the Frisco Lines.

Farming is carried on both with and without irrigation. The water for irrigation is procured from artesian wells. Kingsville is one of the most promising towns of the Gulf Coast Country. Kingsville has 3,500 people and is 7 years old.



Court House, Galveston



Court House, San Antonio

Harlingen

At noon on Tuesday the party will arrive at Harlingen the junction at which the Sam Fordyce branch intersects the main line of the Brownsville road. This is in the lower Coast Country where rapid development is progressing along agricultural lines. Has 1,000 people. It is 4 years old.

San Benito

Two hours stop-over in the afternoon will enable the tourist to visit some of the big irrigation projects and see some of the fine farms that have been developed in the San Benito Country, one of the most noted sections of the lower Coast. San Benito has 3,000 people and is but 4 years old. It was from this section that the world's first bale of cotton was received this season.

Brownsville

Arriving at Brownsville at 4:15 in the afternoon of Tuesday, party will have until 4:30 Thursday morning to see Brownsville, one of the most interesting cities in the United States. The sight-seeing here will include not only a drive about the historic border city and its adjacent cane fields, farms, gardens and orchards, but will extend across the new steel bridge that spans the Rio Grande to the Mexican city of Matamoros,



Park at Mercedes

Ft. Sam Houston



San Juan Mission

Current Bush
Texas Gulf Coast



which has even more attractions of the historic sort. The visitor to Brownsville will have an opportunity to gather many souvenirs in the shape of Mexican diamonds and silver and opal. Brownsville has a population of 10,000.

WEDNESDAY, FEBRUARY 28

Matamoros (Mexico)

It was across the national boundary from Brownsville that Diaz, lately deposed as president of the Republic of Mexico, launched the revolutionary movement which led him to political fame. In the vicinity of Brownsville were waged many of the conflicts of a generation or two ago. Matamoros has its ruined forts, its murder moats and ruined estates, but more interesting than these are her modern parks, her great cathedral and her wonderful cemetery. In Matamoros may be seen the arena where bull fights are waged.

These events occur at uncertain intervals, else our party might be promised an opportunity to witness one of these unusual contests. On the Mexican side of the Rio Grande, opposite Brownsville, is also a banana plantation and tropical garden worthy of a visit.

Point Isabel

One of the side trips planned to be taken from Brownsville



Gathering Onions,
Texas Gulf Coast



Plowing with Traction Engine,
Texas Gulf Coast

is by rail to Point Isabel, the favorite winter hunting and fishing grounds for American sportsmen. There are good hotels and bathing facilities at Point Isabel. The rail journey from Brownsville is very interesting and unique.

THURSDAY, FEBRUARY 29

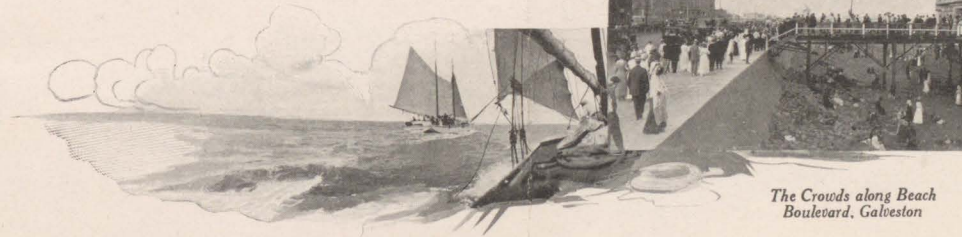
Mission

Turning back from Brownsville, the special will leave the main line at Harlingen for a trip over the Sam Fordyce branch, the first stop being at Mission, from 5:15 to 10:15 a. m. Some of the largest irrigation projects in the lower Rio Grande Valley are to be seen in the vicinity. The Mission Canal, pumping station and system of water distribution is equally as interesting as the wonderful crops which these fertile lands, with the aid of water, are made to produce.

Mission has a population of 2,500 people and is 4 years old.

McAllen

At 10:30 a. m. the tourist will arrive at McAllen, which is only 15 minutes run by train from Mission. An hour and 30 minutes are to be spent here in the inspection of irrigation improvements and growing crops. McAllen is but 5 years old, but has a population of 1,500.



A Race on the Gulf

Shipping
Scene,
Gulf Coast
Country



The Crowds along Beach
Boulevard, Galveston

*Confederate
Monument,
San Antonio*



Conception Mission

White Cranes, Texas Gulf Coast



Pharr

Forty-five minutes will enable the visitor to see some of the evidences of development in progress at Pharr. Pharr has a population of 100, and is but 1 year old.

San Juan

Another half hour or more will be spent at San Juan, where irrigation improvements are also under way. Population 150. Age 1 year.

Donna

After lunch at Donna, two hours will be spent in sightseeing after which the party will proceed to Mercedes. Donna has a population of 1,200 and is 6 years old.

Mercedes

Those who have heard of the Rio Grande Valley and its irrigated lands have heard of Mercedes, for the busy, hustling city has been a pioneer in the development of the irrigation movement. Here are some of the biggest projects and some of the biggest people connected with them. Two hours will be given to a hurried round-up of the attractions of this section. The business houses and hotels of Mercedes and the many beautiful private homes indicate the thrift

and prosperity of the Mercedes district. Mercedes has a population, 1,500, and is but 6 years old.

Bixby

A stop of 15 minutes will be made at Bixby, where some particular points of interest will be shown.

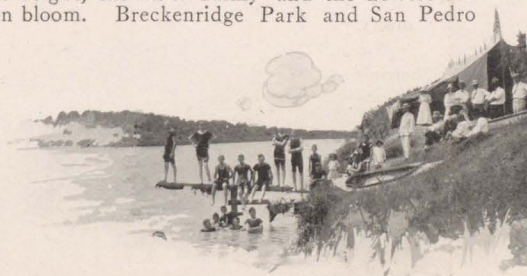
La Feria

After a brief stop at La Feria, where there are some particular features to be seen, the special will proceed to Harlingen and thence via Placedo to San Antonio.

FRIDAY, MARCH 1

San Antonio

Texas' largest and most interesting city will be reached at 9 a. m. on Friday, March 1st, after a pleasant night journey from the Brownsville district. Of all the cities that have been or are to be visited, San Antonio offers the most varied attractions. Its chief feature is its ideal winter climate. The first day of March is like a June day in St. Louis or Chicago, the sun is bright, the air is balmy and the flowers are in bloom. Breckenridge Park and San Pedro



Bathing Scene, Gulf Coast Country



Station Grounds, Brownsville

Rossonian Apartments, Houston



Springs; Fort Sam Houston and the Hot Sulphur Wells; the historic Alamo, where the gallant heroes of Texas met glorious deaths, and the old missions, whose builders are two centuries dead.

Automobile tours will be made over the boulevards through the residence districts.

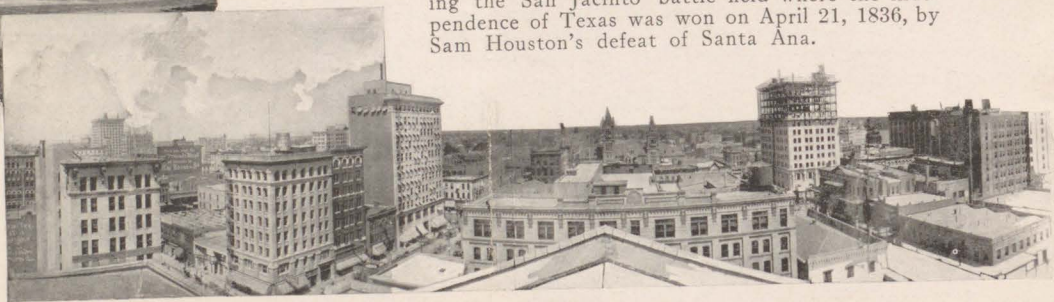
At night the programme changes. San Antonio takes on carnival colors and the streets become illuminated with electricity. The theaters and places of amusements are opened, crowds fill the restaurants and cafes. The night grows on, but it never grows late in San Antonio. Population of San Antonio is 96,614.

SATURDAY, MARCH 2

Houston

Houston is called the Manchester of America, because, like Manchester in England, it has a ship canal to the sea giving it the advantage of deep water, with all of the advantages of an interior railroad center. It is one of the fastest growing cities in the South. The census of 1910 gives Houston a population of 78,800.

Automobile tours will be made over the shell roads to many outlying places of interest, including the San Jacinto battle field where the independence of Texas was won on April 21, 1836, by Sam Houston's defeat of Santa Ana.



Business District, Houston

SUNDAY, MARCH 3

Ft. Worth

After a night journey from Houston the party will arrive in Ft. Worth Sunday morning. For those who wish to attend worship, there will be open some of the finest churches in the South. There will be automobile trips through the residence districts. The population of Ft. Worth, as taken by the 1910 census, was 73,312. It is the largest market for the vast agricultural regions of Western Texas.

Sunday at midnight the party departs from Ft. Worth, via Sherman, for St. Louis.

MONDAY, MARCH 4

The return trip from Texas is through the fertile agricultural country, the beautiful prairie lands, and the interesting oil fields of Oklahoma, spending three hours at Tulsa and making short visits at other points.

TUESDAY, MARCH 5

Our journey ends at St. Louis.



Broadway, Ft. Worth



7th and Main Sts., Ft. Worth



Business District, Ft. Worth

DETAILS OF THE SCHEDULE

Lv. St. Louis.....	Mo.	11.20 pm	Tuesday	Feby. 20	Frisco Lines.
Ar. Springfield.....	Mo.	7.00 am	Wednesday	Feby. 21	"
Lv. Springfield.....	Mo.	9.30 am	Wednesday	Feby. 21	"
Ar. Ft. Smith.....	Ark.	4.00 pm	Wednesday	Feby. 21	"
Lv. Ft. Smith.....	Ark.	8.30 pm	Wednesday	Feby. 21	"
Ar. Dallas.....	Tex.	7.00 am	Thursday	Feby. 22	"
Lv. Dallas.....	Tex.	9.30 pm	Thursday	Feby. 22	H. & T. C.
Ar. Galveston.....	Tex.	7.30 am	Friday	Feby. 23	G. H. & S. A.
Lv. Galveston.....	Tex.	1.55 am	Saturday	Feby. 24	"
Ar. Houston.....	Tex.	3.45 am	Saturday	Feby. 24	"
Lv. Houston.....	Tex.	4.30 am	Saturday	Feby. 24	Frisco Lines.
Ar. Chocolate Bayou	Tex.	6.00 am	Saturday	Feby. 24	"
Lv. Chocolate Bayou	Tex.	8.00 am	Saturday	Feby. 24	"
Ar. Brazoria.....	Tex.	9.10 am	Saturday	Feby. 24	"
Lv. Brazoria.....	Tex.	9.55 am	Saturday	Feby. 24	"
Ar. Bay City.....	Tex.	11.05 am	Saturday	Feby. 24	"
Lv. Bay City.....	Tex.	11.50 am	Saturday	Feby. 24	"
Ar. Collegeport.....	Tex.	1.00 pm	Saturday	Feby. 24	"
Lv. Collegeport.....	Tex.	2.30 pm	Saturday	Feby. 24	"
Ar. Blessing.....	Tex.	3.40 pm	Saturday	Feby. 24	"
Lv. Blessing.....	Tex.	4.25 pm	Saturday	Feby. 24	"
Ar. Francitas.....	Tex.	4.40 pm	Saturday	Feby. 24	"
Lv. Francitas.....	Tex.	5.25 pm	Saturday	Feby. 24	"
Ar. Port O'Connor	Tex.	9.00 pm	Saturday	Feby. 24	"
Lv. Port O'Connor	Tex.	9.00 am	Sunday	Feby. 25	"
Ar. Seadrift.....	Tex.	9.50 am	Sunday	Feby. 25	"
Lv. Seadrift.....	Tex.	10.20 am	Sunday	Feby. 25	"
Ar. Bloomington.....	Tex.	11.20 am	Sunday	Feby. 25	"
Lv. Bloomington.....	Tex.	11.30 am	Sunday	Feby. 25	"
Ar. Sinton.....	Tex.	1.30 pm	Sunday	Feby. 25	"
Lv. Sinton.....	Tex.	2.15 pm	Sunday	Feby. 25	"
Ar. Robstown.....	Tex.	3.05 pm	Sunday	Feby. 25	"
Lv. Robstown.....	Tex.	3.50 pm	Sunday	Feby. 25	"
Ar. Corpus Christi	Tex.	4.30 pm	Sunday	Feby. 25	"
Lv. Corpus Christi	Tex.	5.00 am	Tuesday	Feby. 27	"
Ar. Bishop.....	Tex.	7.00 am	Tuesday	Feby. 27	"
Lv. Bishop.....	Tex.	8.30 am	Tuesday	Feby. 27	"
Ar. Kingsville.....	Tex.	8.45 am	Tuesday	Feby. 27	"
Lv. Kingsville.....	Tex.	9.30 am	Tuesday	Feby. 27	"
Ar. Harlingen.....	Tex.	12.35 pm	Tuesday	Feby. 27	"
Lv. Harlingen.....	Tex.	1.20 pm	Tuesday	Feby. 27	"
Ar. San Benito.....	Tex.	1.35 pm	Tuesday	Feby. 27	"
Lv. San Benito.....	Tex.	3.35 pm	Tuesday	Feby. 27	"
Ar. Brownsville.....	Tex.	4.15 pm	Tuesday	Feby. 27	"

Side trips to Point Isabel and Matamoros.

DETAILS OF THE SCHEDULE—Continued

Lv. Brownsville.....	Tex.	2.30 am	Thursday	Feby. 29	Frisco Lines.
Ar. Mission.....	Tex.	5.15 am	Thursday	Feby. 29	"
Lv. Mission.....	Tex.	10.15 am	Thursday	Feby. 29	"
Ar. McAllen.....	Tex.	10.30 am	Thursday	Feby. 29	"
Lv. McAllen.....	Tex.	11.30 am	Thursday	Feby. 29	"
Ar. Pharr.....	Tex.	11.40 am	Thursday	Feby. 29	"
Lv. Pharr.....	Tex.	12.25 pm	Thursday	Feby. 29	"
Ar. San Juan.....	Tex.	12.30 pm	Thursday	Feby. 29	"
Lv. San Juan.....	Tex.	1.15 pm	Thursday	Feby. 29	"
Ar. Donna.....	Tex.	1.35 pm	Thursday	Feby. 29	"
Lv. Donna.....	Tex.	3.05 pm	Thursday	Feby. 29	"
Ar. Mercedes.....	Tex.	3.25 pm	Thursday	Feby. 29	"
Lv. Mercedes.....	Tex.	4.55 pm	Thursday	Feby. 29	"
Ar. Bixby.....	Tex.	5.05 pm	Thursday	Feby. 29	"
Lv. Bixby.....	Tex.	5.20 pm	Thursday	Feby. 29	"
Ar. La Feria.....	Tex.	5.25 pm	Thursday	Feby. 29	"
Lv. La Feria.....	Tex.	5.40 pm	Thursday	Feby. 29	"
Ar. Harlingen.....	Tex.	6.00 pm	Thursday	Feby. 29	"
Lv. Harlingen.....	Tex.	6.15 pm	Thursday	Feby. 29	"
Ar. Placedo.....	Tex.	3.00 am	Friday	March 1	"
Lv. Placedo.....	Tex.	3.30 am	Friday	March 1	G. H. & S. A.
Ar. San Antonio.....	Tex.	9.00 am	Friday	March 1	"
Lv. San Antonio.....	Tex.	11.55 pm	Friday	March 1	"
Ar. Houston.....	Tex.	8.00 am	Saturday	March 2	"
Lv. Houston.....	Tex.	10.30 pm	Saturday	March 2	H. & T. C.
Ar. Ft. Worth.....	Tex.	8.30 am	Sunday	March 3	"
Lv. Ft. Worth.....	Tex.	12.30 am	Monday	March 4	Frisco Lines.
Ar. Sherman.....	Tex.	4.30 am	Monday	March 4	"
Lv. Sherman.....	Tex.	5.00 am	Monday	March 4	"
Ar. Madill.....	Okla.	7.00 am	Monday	March 4	"
Lv. Madill.....	Okla.	8.00 am	Monday	March 4	"
Ar. Ada.....	Okla.	10.05 am	Monday	March 4	"
Lv. Ada.....	Okla.	10.35 am	Monday	March 4	"
Ar. Francis.....	Okla.	11.05 am	Monday	March 4	"
Lv. Francis.....	Okla.	11.20 am	Monday	March 4	"
Ar. Holdenville.....	Okla.	12.10 pm	Monday	March 4	"
Lv. Holdenville.....	Okla.	12.40 pm	Monday	March 4	"
Ar. Okmulgee.....	Okla.	2.40 pm	Monday	March 4	"
Lv. Okmulgee.....	Okla.	3.10 pm	Monday	March 4	"
Ar. Sapulpa.....	Okla.	4.20 pm	Monday	March 4	"
Lv. Sapulpa.....	Okla.	5.20 pm	Monday	March 4	"
Ar. Tulsa.....	Okla.	5.50 pm	Monday	March 4	"
Lv. Tulsa.....	Okla.	8.50 pm	Monday	March 4	"
Ar. Saint Louis.....	Mo.	10.40 am	Tuesday	March 5	"



CON. P. CURRAN PRINTING CO.,
ST. LOUIS.

*Map showing Route of Special Tour
to the Gulf Coast Country of Texas*

