

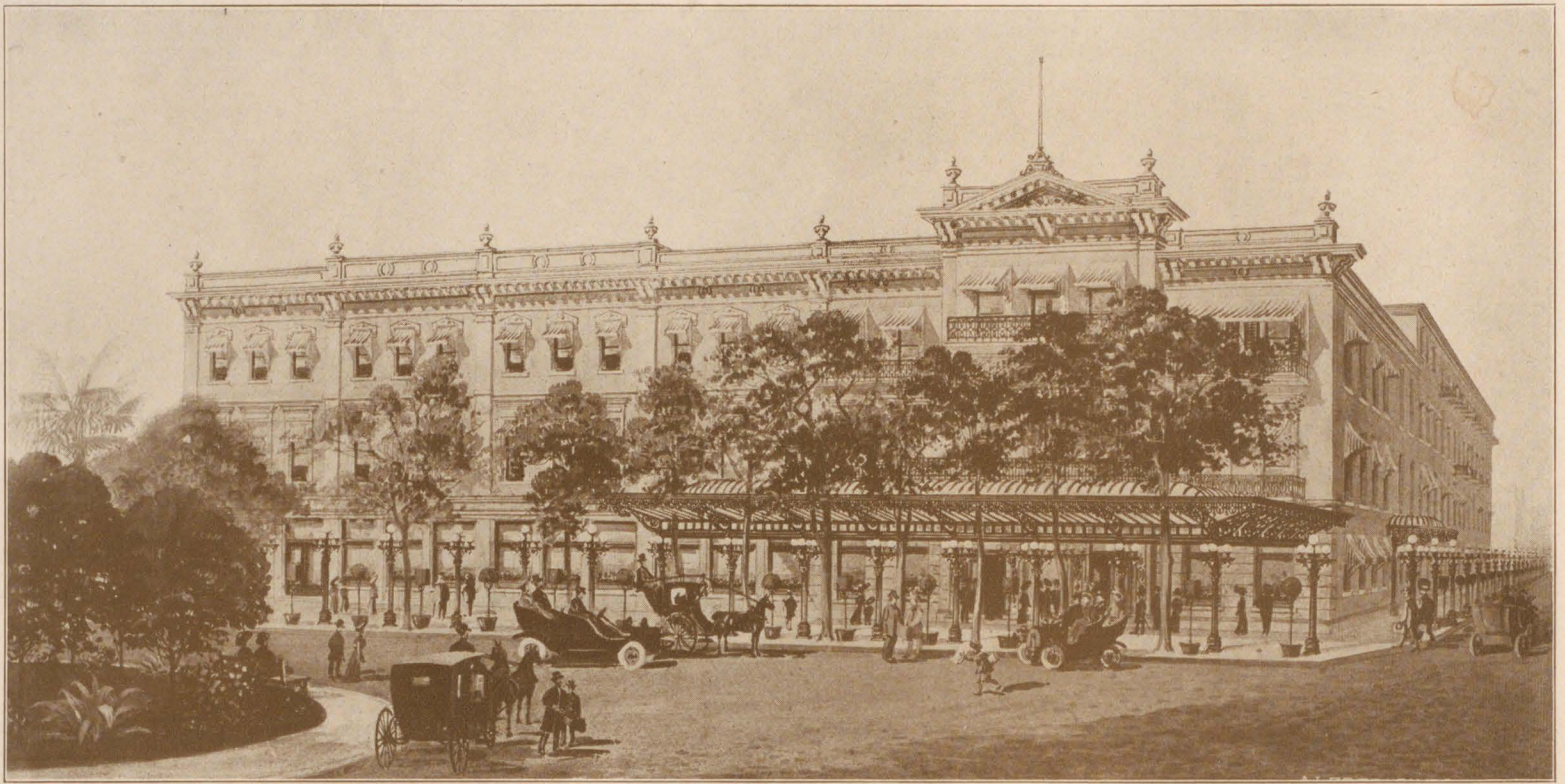
FIFTEEN CENTS A COPY

San Antonio

under

Sunny Southern Skies

IN THE DEPTHS OF TROPICAL BRACKENRIDGE PARK

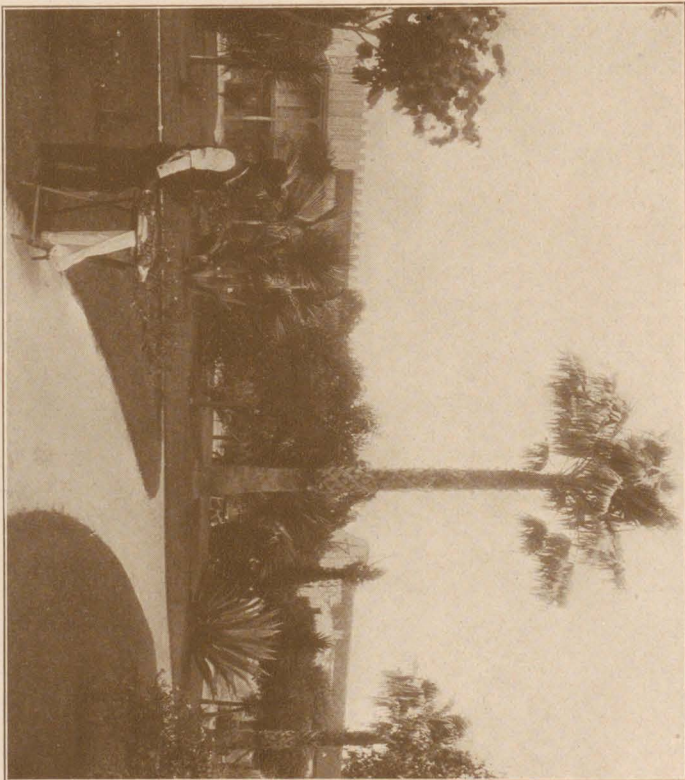


Remodeled and embellished.

THE MENGER.

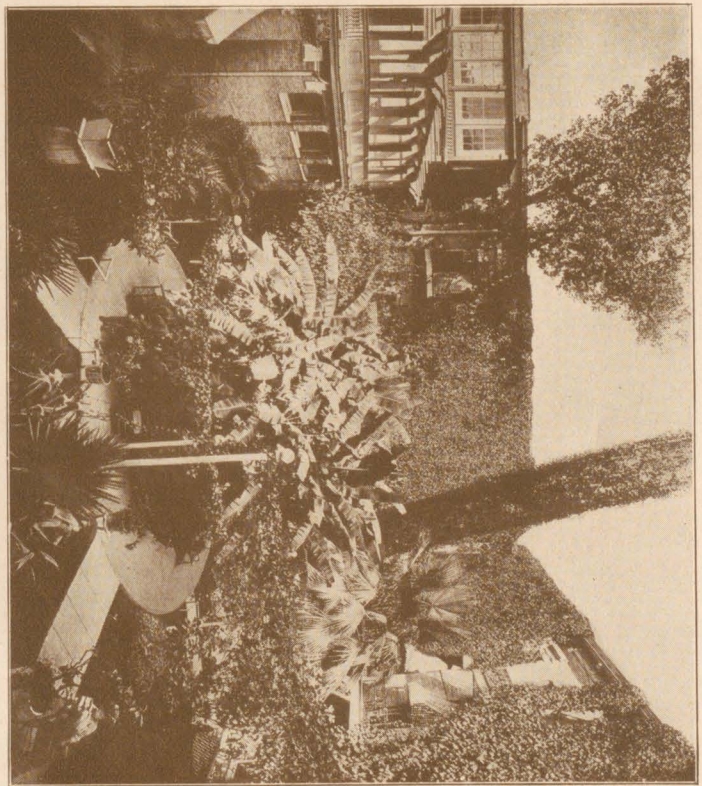
Extensively refurnished.

San Antonio's most beautiful, convenient and comfortable first-class hotel, with its new forefront marquee, clustered lights, marble and mosaic rotunda and connecting general rooms, tropical court, buffet pergola and Mexican garden for open-air dining. The Menger fronts upon the famous Alamo plaza. American plan.
 Wm. C. Bruce, Manager.

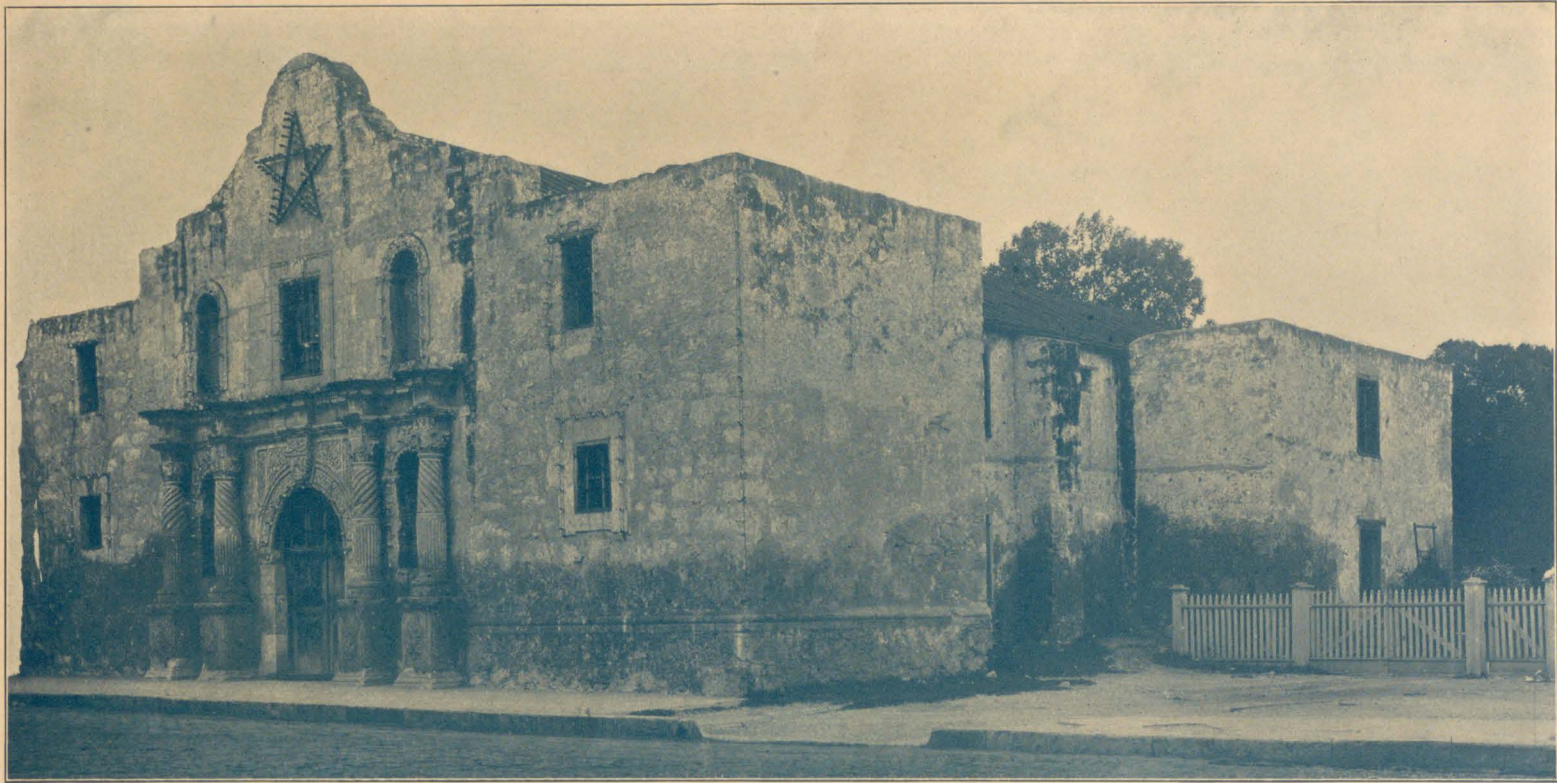


A MEXICAN PECAN-CANDY VENDER IN THE MENGER ALAMO.

4 x 7



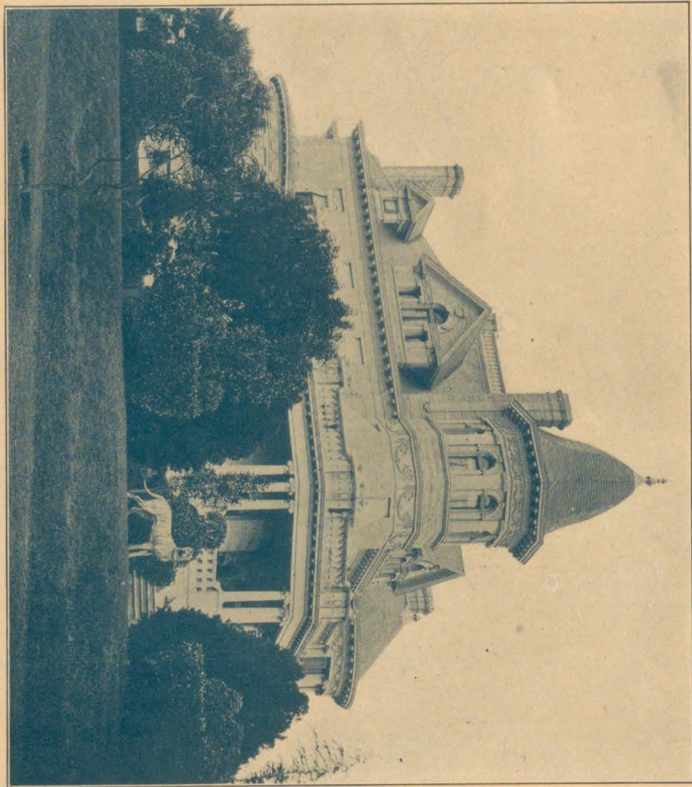
THE MENGER'S FAMOUS TROPICAL COURT AND ROOF PERGOLA.



THE TWO CENTURIES OLD FAMOUS ALAMO TO-DATE IN ITS ENTIRETY.

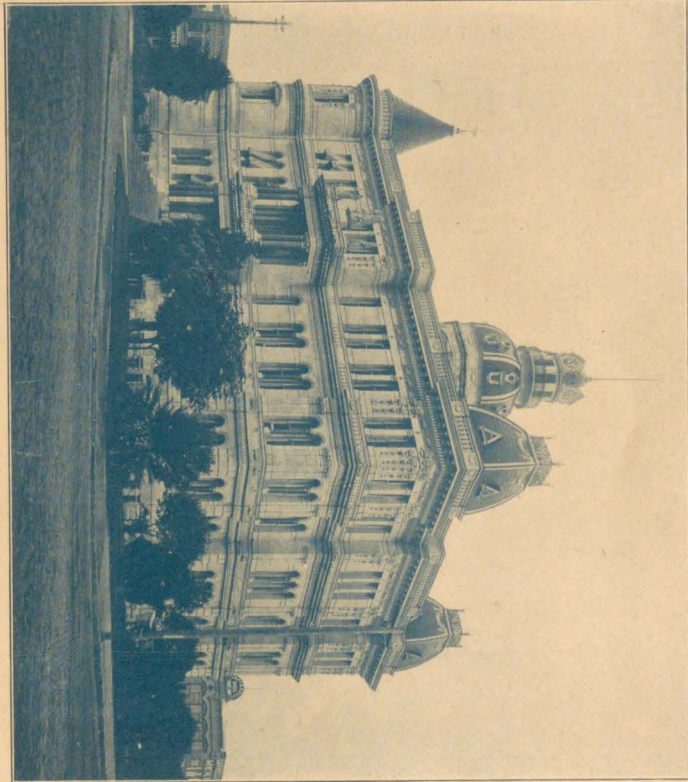
"x"

The cradle of Texas independence and the imperishable tomb of Travis, Crockett, Bowie, Bonham and one hundred and eighty other Texan hero-martyrs who perished in its tragic defense before Santa Ana and five thousand butchering Mexicans, on March 6, 1836. The Texan heroes repulsed the Mexican horde for several days and slaughtered thousands of them before their own extermination and incineration within these blood-soaked walls.



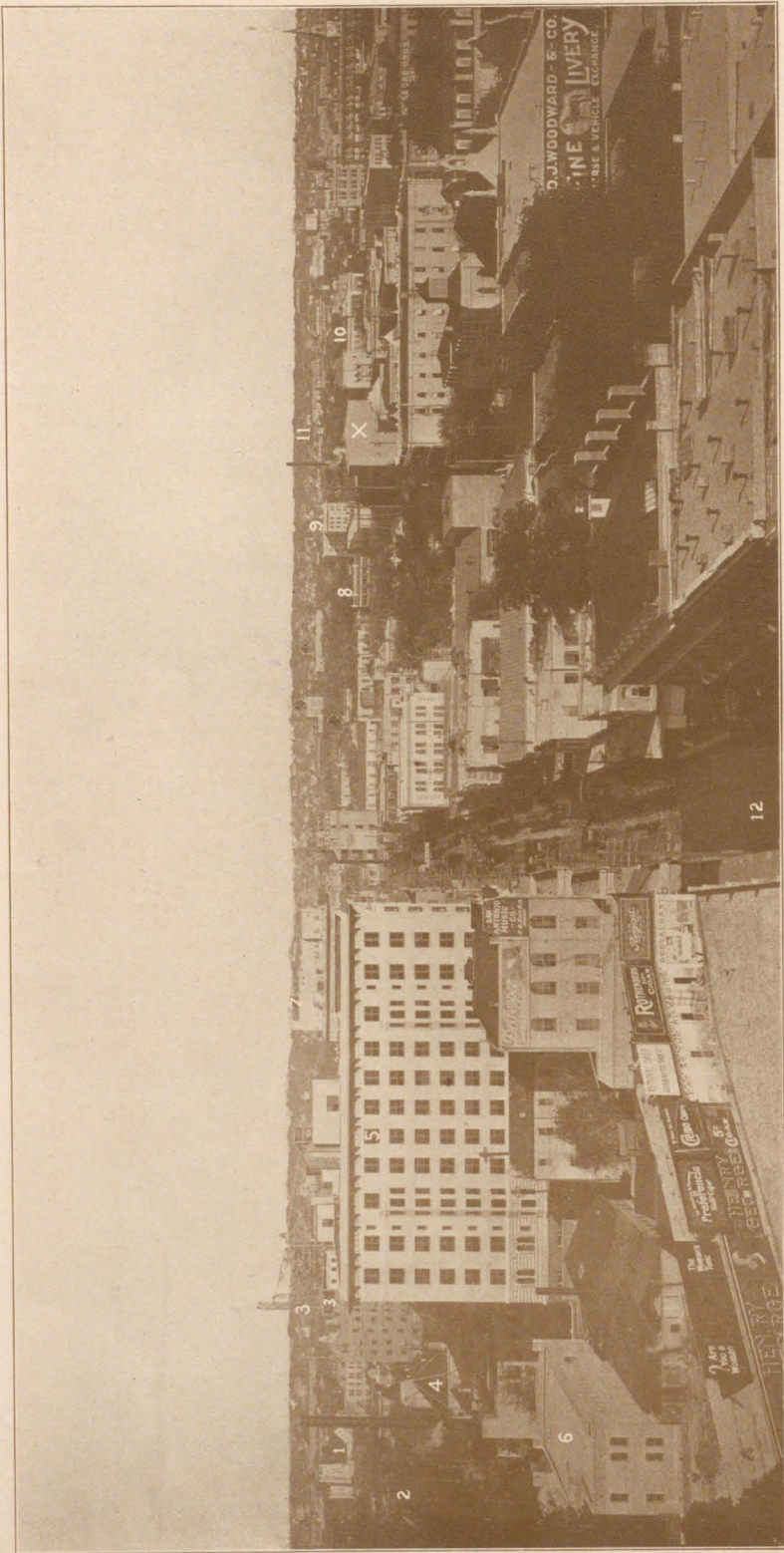
A MARBLE PALACE AND PARKED GROUNDS ON LAUREL HEIGHTS.

"x"



THE BEAUTIFUL CITY HALL IN MILITARY PLAZA.

"x"



PANORAMA OF THE HEART OF SAN ANTONIO AND HOUSTON STREET TO-DATE FROM THE ROOF OF THE TEN-STORY CLOWER BUILDING.

- 1—The new First Presbyterian.
- 2—Travis Park.
- 3—The Gibbs Building.
- 4—The St. Anthony Hotel and its nine-story annex.
- 5—Travis Park Methodist.
- 6—The Victoria Annex.
- 7—The Menger.
- 8—Alamo Plaza.
- 9—The new Crockett Hotel.
- 10—M. K. & T. Depot.
- 11—The Grand Opera House.
- 12—Houston street to-day, the main artery.

San Antonio

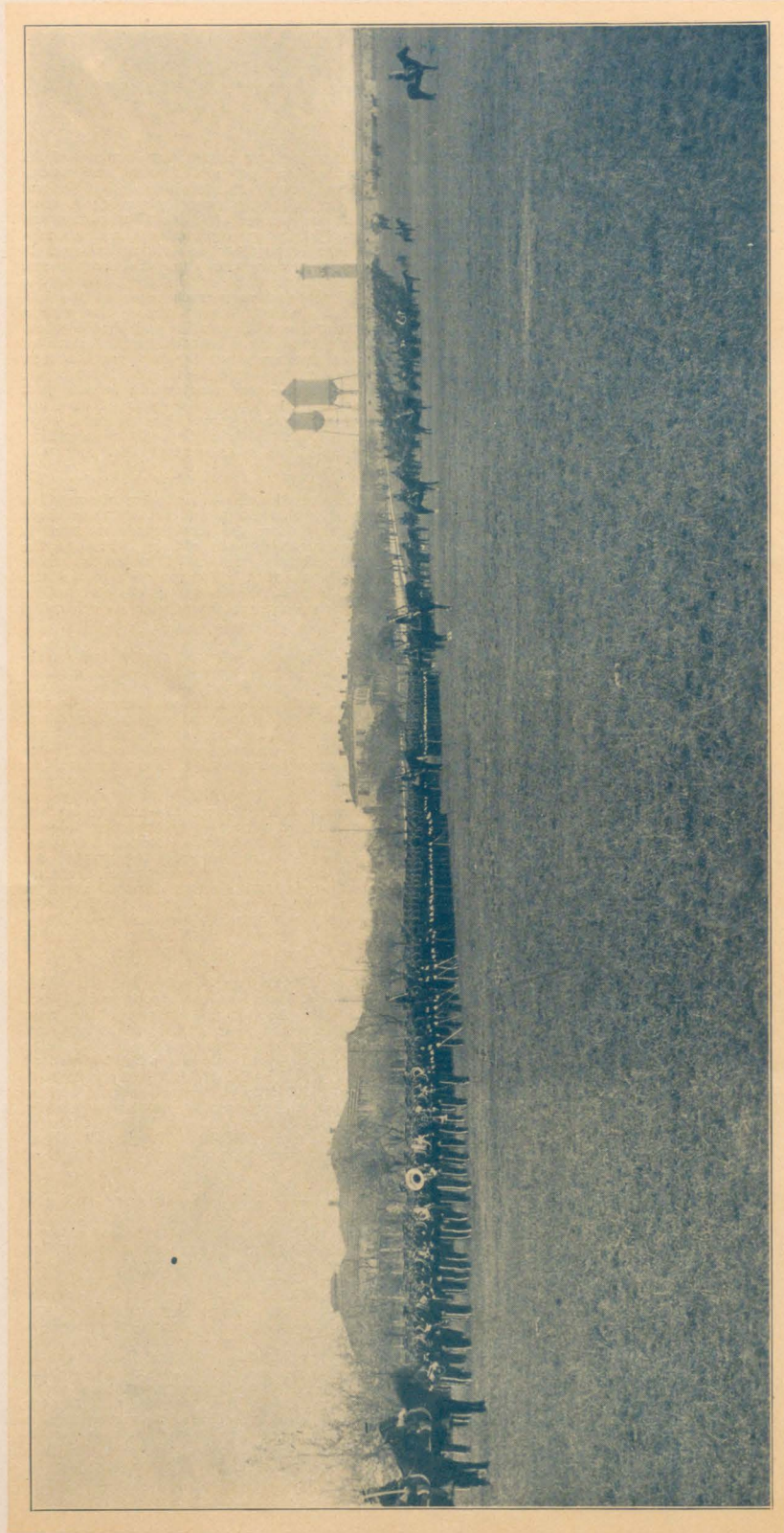
SAN ANTONIO excels incomparably as the American winter resort city because of its ever-sunny skies and balmy temperature, verdant foliage and perennial flowers, and continuous outdoor charms of promenades, riding, driving and games. Its absorbing antiquities and traditions alternate with metropolitan modernities, affording every pleasure, comfort and convenience. The new-century depots and hotels are palaces, asphalt and macadam and the cement walk are becoming ubiquitous, the thoroughfares are well watered and administered and brilliantly illuminated, and everywhere one turns there is striking evidence of teeming prosperity and patriotism. The visitor no sooner recovers from the surprise and fascination of the sunny skies and intoxicating climate than he or she succumbs to the enthralling enchantment that invests the tragic Alamo and moss-green ruins of the historic missions, aqueduct, tunnels, Spanish palace and Crockett home; thence the curious and incredible Mexican quarter of swarming streets and corals, shanties and shacks whose "family" broods include even canines, cats and chickens (as illustrated). A feature of this quaint section is a Columbus chapel of caboose size some two hundred years of age. In electrifying contrasts come the modern plazas, parks, academies, schools, colleges, churches, library, clubs, stores, hotels, Fort Sam Houston—now a mammoth brigade post—and the magical enviroing suburbs that encompass the Texas metropolis of over one hundred thousand population in the tenth year of the new century. San Antonio, since 1900, has developed beyond the wildest fancies of an Arabian Nights fictionist, bequeathing pioneers and promoters amazing fortunes, and establishing a momentum that augurs a Southwest Mecca of a million before 1950.

SAN ANTONIO dates from its incipency in 1712, when Spanish adventurers attempted a settlement on the present site, purposing to convert the aboriginals and protect their chain of fortress-churches (the old missions) then in embryo from the Rio Grande to what is to-day San Pedro Park. San Antonio will be two hundred years old in 1912, and the anniversary may be celebrated internationally in a colossus stadium of twenty-five thousand sittings, now contemplated as a San Pedro Park annex. Topographically the site seems to have been divinely purposed therefor, and with the proposed mammoth stadium the San Antonio of the immediate future will aptly rival ancient Rome with its celebrated open-air Coliseum.

APPARENTLY San Antonio was laid out upon a dice or kaleidoscopic throw and formation. It is singularly foreign and picturesquely odd-angled in serpentine streets, oval and oblong plazas, triangle corners and junctions, and uniquely tangled heirlooms and modernities. There is hardly a straight or continuous street through the Alamo city north, south, east or west, Commerce and Houston the only ones to be at all so considered, and even they have bends and juts strategically preventive of military or cannon-gun sharp-shooting in war or riot emergencies. Houston street, the modern main and sole through street-car thoroughfare, is rapidly taking on the thronged aspect of a Broadway or State street, from the Alamo to Soledad, with its continuously massed walks and Navarro hub. Old Commerce is confronted with the merciless ultimatum of doubling its width, despite the staggering cost, or suffering complete retail eclipse. The twentieth century, in fact, has precipitated a metropolitan commercial Juggernaut that portends the sweeping oblivion of San Antonio antiquities and traditions. The zigzag San Antonio through the heart of the city is, of course, responsible for its bewildering and picturesque topography, but may it still be many a modern day hence before the progressive pressure of the time encroaches upon or eliminates that perhaps most curio thoroughfare in the world of travel—North Flores, from Houston to San Pedro Park—with its tiny Venetian front yard and doorway canal, tropically arcaded, vine and flower fringed, ever and anon disappearing and reappearing, under and from the hugging houses. Fascinating and beloved is unique and unrivaled sweet old San Antonio.

BRACKENRIDGE PARK, a natural, tropical forest, a mile in length and a half in width, lies in the north limits of the city, between River and Jones avenues, opposite Fort Sam Houston, and is scenically coursed by the zigzag San Antonio. It surpasses the great parks of New York, Chicago and San Francisco in majestic, mossy trees and foliage, and abounds with drives and strolls through jungle depths and sunbeamed shade. It is an endowed bequest, the coming San Antonio Thiergarten, already ravishingly begun, and reigns the pride and pet of every patriot and sojourner. Among its features are fields of buffalo, antelope, elk, deer and bears. San Pedro Park, further down town, is next in size and of centennial age and charm, with its gnarled oaks, stone star, caves and raceway, its azure lake and gliding swan, and rustic and lovers' settees. Other picture parks in the heart of San Antonio are Traves square, the oval Alamo, Main, Military and Milam, each an evergreen shrine. Innumerable similar beauty spots adorn the modern sections of the magically expanding city.

THE current year and season of San Antonio spa have in store the greatest and most gratifying surprise for intending tourists and resorters in palatial and sumptuous new and remodeled hotel accommodations. Almost magically within a year there has occurred a complete transformation, unrivaled elsewhere in American resortdom, rescuing San Antonio from a decade of manana procrastination, and establishing it in first rank, asserted from the viewpoints of the most exacting requisites—quality, capacity and service. A fairy's wand seems to have been waved in the sunny spa and rolled up the proscenium curtain, revealing a bewildering scene of evolution. The stately new St. Anthony, costing in site, construction and de luxe equipment a million and a half, fireproof and metropolitan, ranks with the hotel palaces of San Francisco, New Orleans, Tampa and the Florida east coast, and will notably detract from their former discriminating patronage, as peregrinating resort society loves change and variety in attuned environment. The popular Menger has likewise harmoniously advanced, with \$100,000 in improvements and embellishments, including the entire first or rotunda-suite floor a new symphony of marble, mosaics and ivory against a dark green background, all opening into its famous Mexican patio, pergola and outdoor dining-gardens. San Antonio was full ten-years ripe for the Alladinesque transformation and will newly attract to and overflow them all, with a plenteous excess for their to-date natty contemporaries, the Hutchins, Crocker, Victoria, and numerous deserving others—now combining in the new San Antonio total hotel capacity for ten thousand daily arrivals in any event or emergency.

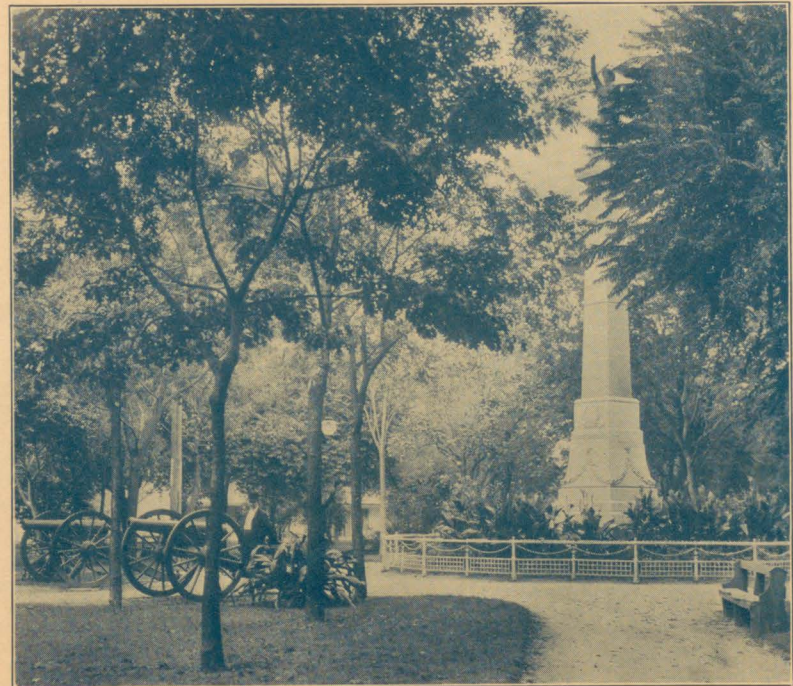


FORT SAM HOUSTON — A GRAND REVIEW OF THE INFANTRY, CAVALRY AND ARTILLERY BY PRESIDENT TAFT.



PROMENADE AND OFFICERS' RESIDENCES IN FORT SAM HOUSTON.

SAN ANTONIO teems with several hundred local automobiles, and innumerable resorters bring their own Pullmanesque machines. Bexar county radiates with 350 miles of macadamized highways.

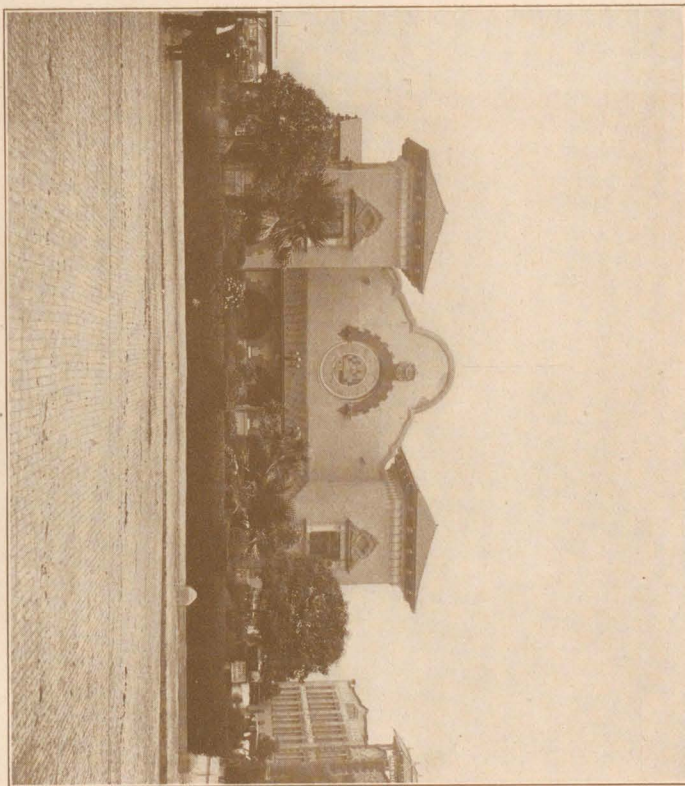


IN THE HEART OF EVERGREEN TRAVIS PARK.

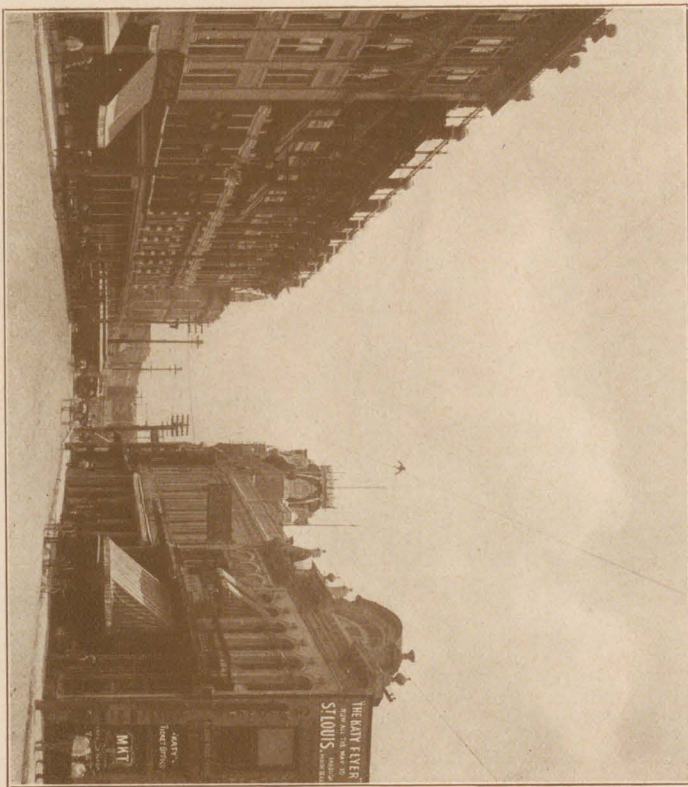


RIVERSIDE AVENUE, ACADEMY OF THE INCARNATE WORD, THE COUNTRY CLUB AND GOLF GROUNDS, AND BEAUTIFUL ALAMO HEIGHTS IN THE BACKGROUND.

The San Antonio Country Club consists of over one hundred acres and 250 resident share-holding members (with a waiting list), twenty-five honorary members, and represents a cost of \$50,000 to-date grounds, buildings and equipment. The fee (or a share) is \$100, the annual dues \$40. A fine café service is provided, also an orchestra, with formal and informal dancing. Eligible resorters and tourists enjoy the splendid golf mall. "x"



THE M. K. & T. TROPICAL TERMINAL ON EAST COMMERCE STREET. "x"



THE "KATY" UP-TOWN TICKET OFFICE ON ALAMO STREET AND PLAZA.



A PROMENADE IN THE MODERN TROPICAL EFFULGENCE OF ALAMO PLAZA.

Headquarters of Burton & Danforth, Louis Book Stores, and Fischer's.



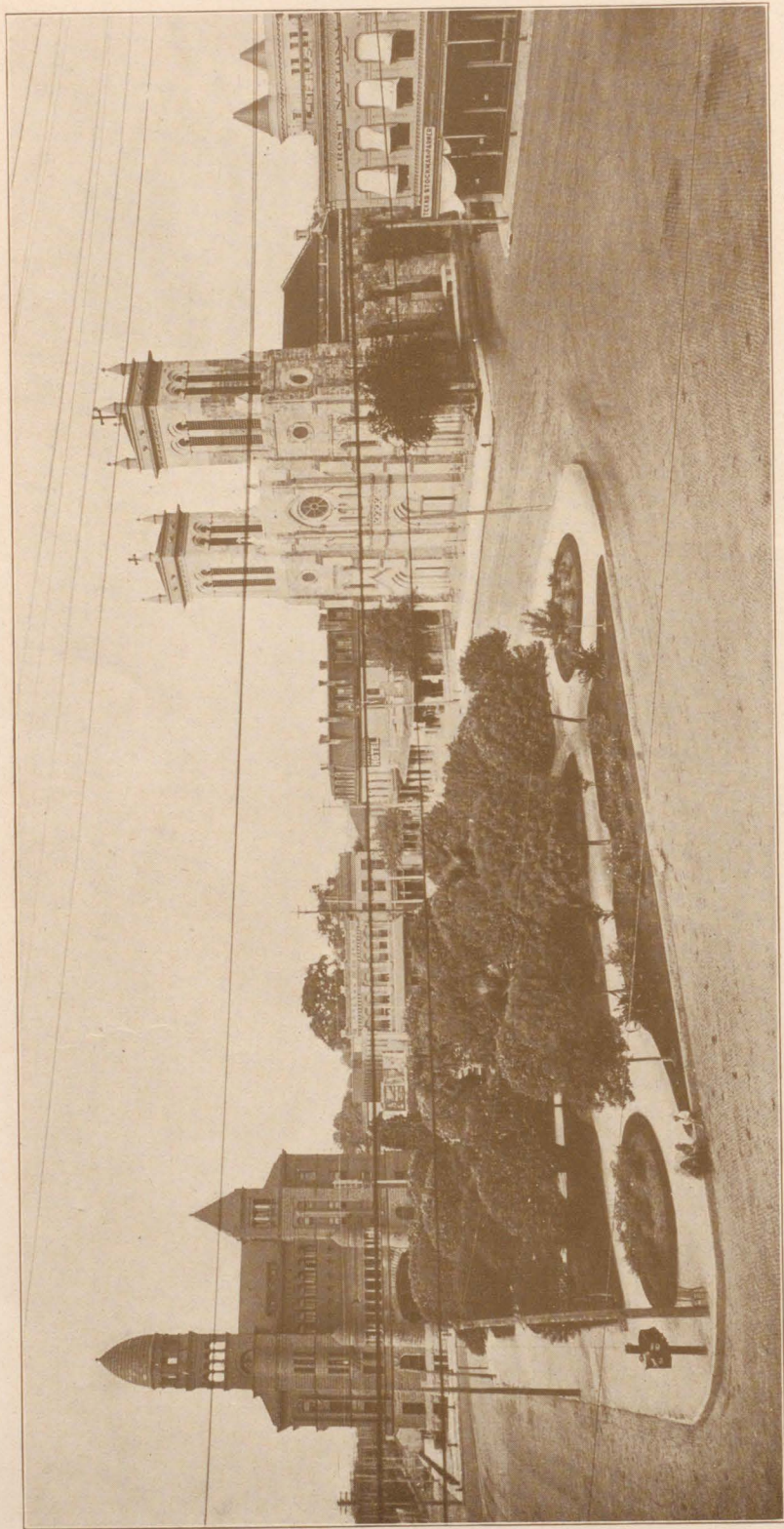
THE NEW GIBBS BUILDING, OVERLOOKING ALAMO PLAZA.

San Antonio's first steel-constructed skyscraper, eight stories, marble, brick and mosaics; with Otis elevators, artesian well water, circulating ice-water, hot and cold water, mail chute, vacuum cleaners, vaults and individual lockers, the latest sanitary toilets, monogrammed linen, etc. Estimated cost, \$500,000.



BEAUTIFUL ALAMO PLAZA AND ENVIRONS UP-TO-DATE.

Showing the new Gibbs' skyscraper, the enlarged postoffice, the new Elks' Club and the sacred old Alamo.



MAIN PLAZA, THE BEXAR COUNTY COURTHOUSE AND HISTORIC SAN FERNANDO CATHEDRAL.



SOLDIERS' MEMORIAL IN THE CENTER OF TRAVIS PARK.

San Antonio Under Sunny Southern Skies



THE STATELY ST. ANTHONY HOTEL AND BEAUTIFUL TRAVIS PARK SQUARE,

The center of San Antonio to-date, the modern and sumptuous establishment of the American winter city, the rendezvous of fashionable resident, military and traveling society, with its stately rotunda, columned court, mezzanine galleries, ballroom and convention hall, Japanese tea pergola and sunny patio, immense verandas, tapestry room, rich parlors and cozy dens, café salons and grills, rathskeller, library, park front loggia and roof-garden, etc. The doubled St. Anthony has 450 sunshine suites and rooms, luxuriously equipped and brilliantly illuminated, with private baths, both waters, lavatories, telephones, steam heat, large and light closets, and all the conveniences and popular diversitements.

F. M. SWEARINGEN & SON, Managing Directors.

THE FAMOUS SPANISH MISSIONS.



SAN JOSE DE AGUAYO, 1718.
With window and sculpture art masterpieces.

SAN ANTONIO'S famous six fortress-church missions, the pioneer Spanish heirlooms, are indisputably the resort city's premier attraction for the annual visitors. First, of course, is the blood-bleared Alamo, that originated in 1703 on the Rio Grande, and upon its removal to San Antonio occupied a site in San Pedro Park, thence in Military plaza, and ultimately, if not eternally, its present position in the heart of the city. The Santa Ana slaughterers left barely its forefront and roofless, decimated side walls, and even to-day the sacred premises are in ghastly restoration. The San Fernando cathedral on Main plaza, begun in 1732, was finished only since 1900 was born. The rear of it is a strange remnant of lost-history Indian architecture. A Sunday high-mass audience is a San Antonio



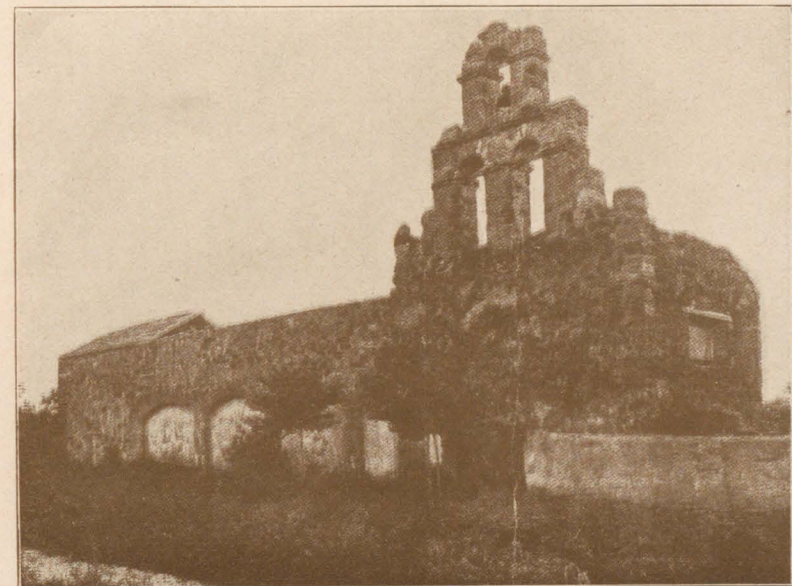
NEUSTRA SENORA DE LA CONCEPCION, 1731.
A Moresque architectural heirloom.

THE FAMOUS SPANISH MISSIONS.



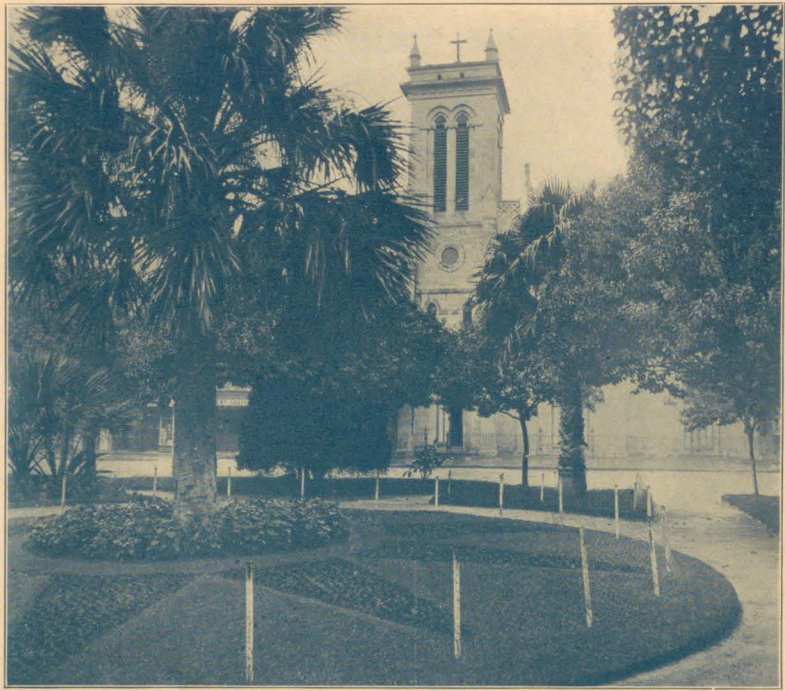
" x " SAN FRANCISCO DE LA ESPADA, 1716-1730.
The fortress-church of the saint and sword.

curio scene of cosmopolitan admixture or elbowing aristocracy and peonry. The outer heirlooms of San Juan, Espada, San José and Concepcion are *en chaine* southwards from the city, about half a dozen miles apart, decrepit, moss-stained and shamefully pilfered of their illustrious art carvings, statues, door and window arches, and even their ruin-walls. The accompanying illustrations of the revered ruins are from recent and minutely detailed photographs.



SAN JUAN DE CAPISTRANO, 1731.
The most typically Spanish and picturesque moss-grown ruins.

ART SCENES OF SAN ANTONIO IN NATURE FRAMES.



A SAN FERNANDO CAMPANILE FROM THE DEPTHS OF MAIN PLAZA. "x"



THE COURTHOUSE IN A MAIN PLAZA PERSPECTIVE. "x"

ART SCENES OF SAN ANTONIO IN NATURE FRAMES.



THE FEDERAL CASTLE FROM THE ALAMO PAVILION. "x"



A VENETIAN VISTA IN THE HEART OF SAN ANTONIO. "x"



IN THE GOVERNMENT ARSENAL PARK ON SOUTH FLORES STREET. "x"

HEADQUARTERS OF INTEREST AND INFORMATION:

Visitors — resorters and tourists — in San Antonio are cordially invited to make themselves "at home" at the Louis Book Stores, on Houston street and Main plaza, for information about San Antonio, and where they will find on sale their "home" papers, all the popular periodicals, souvenirs, cigars, tobacco and pipes, the standard soft drinks, phonographic music, post-cards, stationery, etc.

LOUIS BOOK STORES,
 Gibbs building, 521 East Houston street. Washer bldg., 130 Main plaza.
 406 East Houston street. Wholesale agents for "San Antonio Under Sunny Southern Skies."



ALAMO PLAZA AND STREET FROM THE NEW GIBBS BUILDING.

Horlick's Milk is the most delightful and healthful meat and drink.



"THE HUTCHINS" HOTEL, IN THE FASHIONABLE RESIDENCE DISTRICT.

"Not the largest, but as good as the best." American plan, \$2.50 per day upward; 100 charming suites and rooms; private and connecting baths; all the comforts and conveniences; sunny piazzas and private park on the San Antonio; select patronage and social functions; five minutes' walk from Houston street, with direct cars to all points of interest in the city.
 M. B. HUTCHINS, Proprietor, 205 Garden street.

The exceptionally beautiful art photograph comprising the title-page of "San Antonio Under Sunny Southern Skies," and the others marked "x" within these pages, were taken by Mr. J. B. Kent, of Chandler, Oklahoma, and are used in this work with the permission and by the courtesy of The Clifton George Company, promoters of the Alamo Heights district, the choicest and most fashionable suburban residence section of the city.

The peerless diva, Mme. Marcella Sembrich, uses only the Baldwin piano everywhere.



A TYPICAL HABITATION IN THE SUBURBAN MEXICAN SECTION.

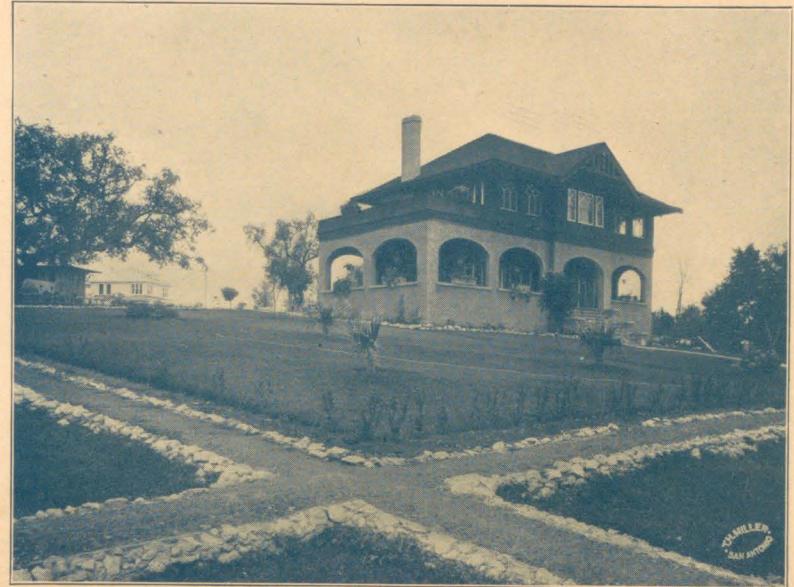


A PICTURESQUE HOME IN BEAUTIFUL ALAMO HEIGHTS.
Possibilities of foliage, shrubbery and lawn adornment in tropical Texas.



AUTOING THROUGH BEAUTIFUL BRACKENRIDGE PARK TO ALAMO HEIGHTS.

SELECT AND SCENIC ALAMO HEIGHTS.



THE ALAMO HEIGHTS HOME OF THE CLIFTON GEORGES.

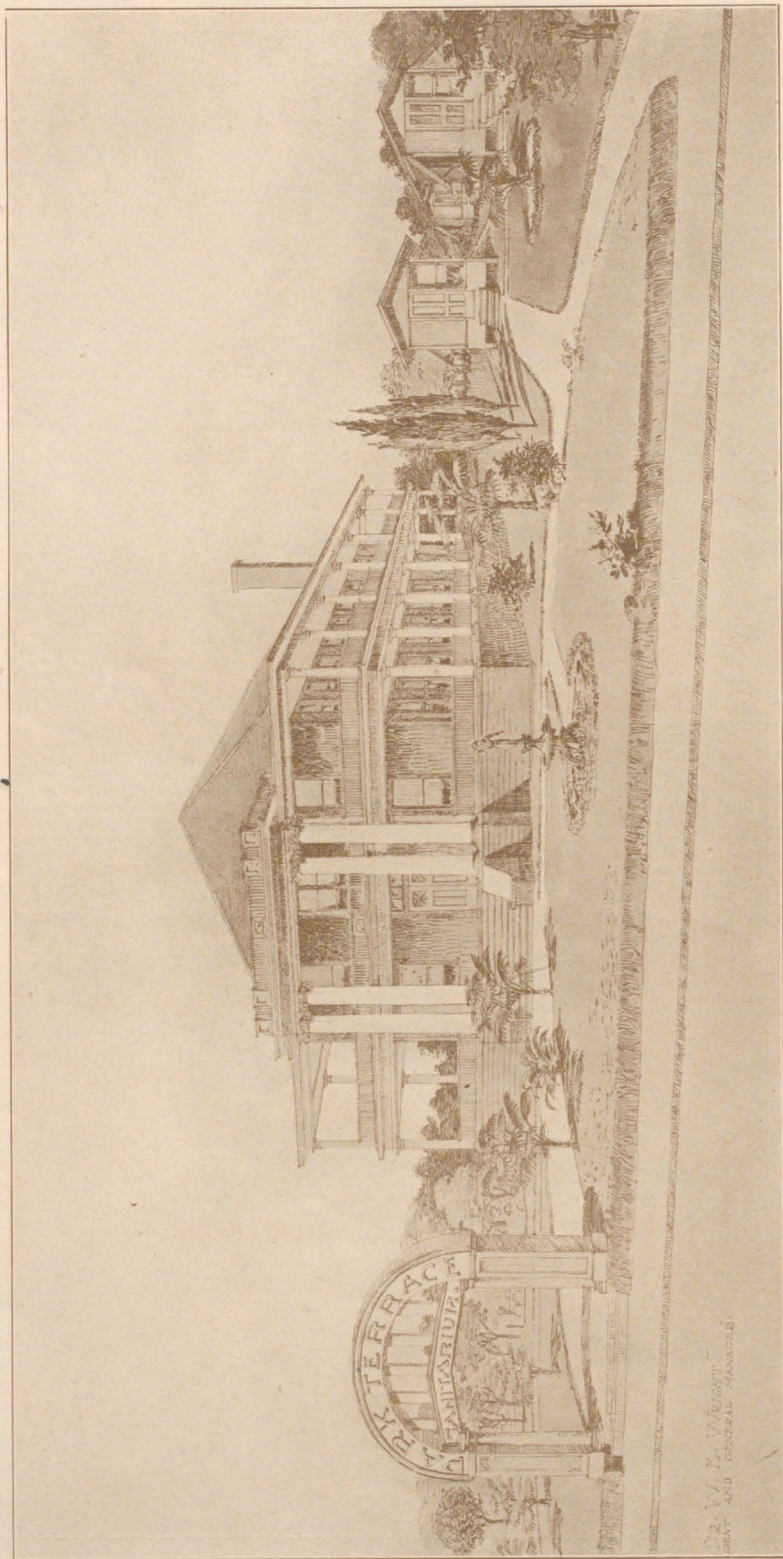
Alamo Heights, the fashionable suburb of the San Antonio elects, occupies the north-eastern summits—like the seven hills of Rome—just outside the city limits, nearly a thousand feet above the sea and gulf, and over two hundred above the Alamo metropolis, whose center and circumference it commands in sweeping panorama. These are typical homes of the exclusive and restricted residence district that carries the proudest name of the Alamo city and deserves it. Alamo Heights is picturesque and possible of the most artistic adornment with its wide-spreading, moss-fringed evergreen live oaks, walnut, elm, maple, laurel and pecan trees, the chinaberry umbrellas, agarita and other beautiful southern shrubbery. It has artesian water and electric lights, and is swiftly reached by electric cars and autos on River avenue boulevard, via Brackenridge Park, Fort Sam Houston terrace, the Country Club, and stately academies.



THE ALAMO HEIGHTS HOME OF THE MAJOR MOBERLYS.

Horlick's Milk is the most delightful and healthful meat and drink.

The Baldwin pianos, players and organs lead the international demand for the highest-grade musical instruments.



PARK TERRACE SANITARIUM AND OPEN-AIR COTTAGES.
Overlooking San Antonio in Panorama.

A new and complete establishment for the modern treatment of the throat and lungs, with 200 yards of wide, sunny piazzas, screened open-air rooms and individual open-walled cottages for those desiring them. Everything up-to-date, with steam heat, hot and cold water, electric light, telephone and resident medical director. Best climate in the world for this class of patients. For full information, address Dr. W. E. WRIGHT, Hicks building, San Antonio, Texas.

The Baldwin Piano Company at fifty years is operating five huge factories and manufacturing 30,000 instruments annually.

Horlick's Milk is the most delightful and healthful meat and drink.



THE NEW CROCKETT HOTEL.

Facing Alamo plaza, opposite the Grand Opera House; fireproof, European; 100 beautiful, sunny rooms, with steam heat, hot and cold water, the telephone, private and connecting baths, sample-rooms, etc. Rates, \$1 to \$2.50 per day. Dining-room and a la carte service.
F. PEGG AND WM. NAGEL, Proprietors.

The peerless diva, Mme. Marcella Sembrich, uses only the Baldwin piano everywhere.



VICTORIA HOTEL AND ANNEX, 319 ST. MARY'S STREET.

American plan at \$2 and upward a day; sixty rooms, with private baths or running water, steam heat and all conveniences, both 'phones, etc. First-class service, homelike cuisine, everything new and crisp; special attention given commercial patronage. Opposite the Gunter, and open day and night.
K. C. GRAVES, Proprietor.



THE FAMOUS TREE LOVERS'-BENCHES IN DREAMY SAN PEDRO PARK. "x"



SAN PEDRO PARK LAKE AND SWAN HOUSES FROM THE BRIDGE. "x"

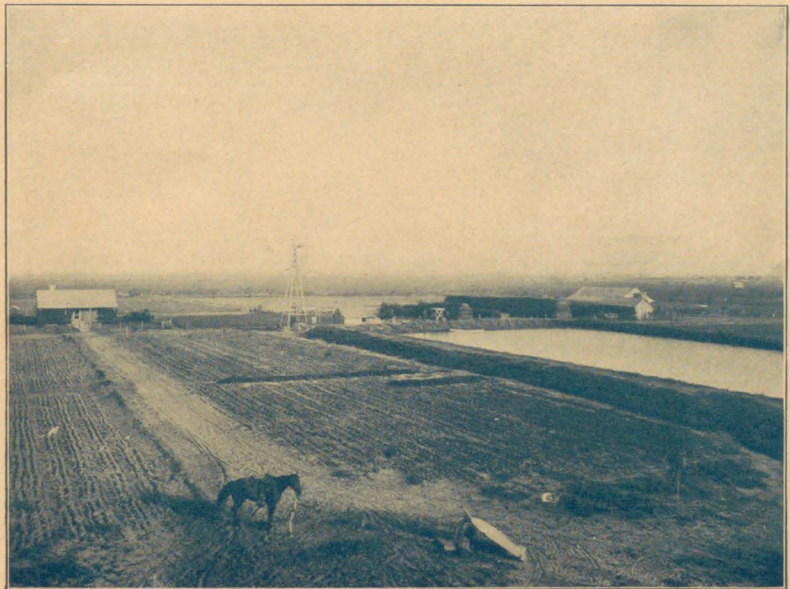
FALFURRIAS, THE FASTEST GROWING TOWN IN MAGICAL TEXAS.



A SPECIMEN SCENE OF THE LARGEST HERD OF HIGH-GRADE JERSEY CATTLE IN THE WORLD, AT FALFURRIAS, TEXAS.

Four years ago the now flourishing town of Falfurrias was not on the map. The site was simply the headquarters of a large ranch. Nobody raised any vegetables. To-day Falfurrias is the very heart of the famous vegetable section of the Gulf Coast country, with 3,500 population, three hotels, fine stores, three lumber yards, cotton gins, water-works and ice plant, and 21,000 acres under cultivation. Thousands of people are pouring into the section and buying five and ten acre farms. The average price is \$40 an acre, and all sold on easy payments. Richly illustrated literature is sent free to any address.

BURTON & DANFORTH, fifth floor Gibbs building, San Antonio, Texas.



A TYPICAL TRUCK-FARM, WITH ARTESIAN WELL AND RESERVOIR, AT FALFURRIAS, TEXAS.

THE thousands of new resorters and tourists now contemplating metropolitanized San Antonio will be intensely interested in the spa's roster of outdoor and social diversions. They are golf, tennis, polo, fort and plaza concerts, autoing and equine riding, hunting and fishing, military maneuvers, bric-a-brac buying, dinners, dances, cards and club assemblies of congenial spirits. Churches and theaters abound, and national metropolitan dramatic successes *en tour* almost nightly appear at the Grand.

Duck dinners are a specialty in sunny San Antonio, the surrounding country abounding with wild deer, duck and quail grounds right at hand.



Fireproof. HOTEL JEFFERSON, ST. LOUIS. European.

The famous St. Louis house of luxurious equipment, metropolitan service, fashionable patronage, and particularly that of discriminating travel. A delightful stop-over premises for Northern resorters en route to sunny San Antonio, Mexico and California.
L. T. HAY, General Manager.

THE HALF-TONE OF FIRST QUALITY HAS REPLACED STEEL ENGRAVING:

The perfection of half-tone reproduction of fine photography has been incomparably attained by the Inland-Walton Engraving Company, of Chicago, exclusive engravers for *The Inland Printer* and Persinger's Pictorial Publications of American cities and resorts—including this to-date representation of "San Antonio Under Sunny Southern Skies." The best obtainable photographs and half-tones are vitally essential to these luxurious letterpress results, and the price or cost is always invariably of second consideration to the quality. The Inland-Walton Engraving Company stands for the top best in all details at the most reasonable rates where requisite results are imperative. Its mechanism and experts are the latest and highest-skilled, respectively, and the entire satisfaction of its every patron is unvarying.

THE INLAND-WALTON ENGRAVING COMPANY, 120-130 Sherman street, Chicago.

Horlick's Milk is the most delightful and healthful meat and drink.

**GRAND
TRUNK
RAILWAY
SYSTEM**

The Great International Double-Track Railway
—BETWEEN—
The East and West via Niagara Falls and Chicago

THE
DIRECT ROUTE
LEADING
TO

**CANADA—America's
Summer Playground**

INCLUDING

Georgian Bay, Muskoka Lakes, Lake of Bays, Maganetawan River, Kawartha Lakes, Temagami Region, Niagara Falls, Thousand Islands, Rapids of St. Lawrence, Montreal, Quebec, Saguenay, and the Adirondacks; Portland, Boston, the Mountains of New England, and all the Sea Coast resorts. ¶ Also to New York, Philadelphia and the Jersey Coast resorts via the Grand Trunk-Lehigh Valley double-track route. ¶ Before deciding where to spend next summer's vacation, write for free literature and particulars.

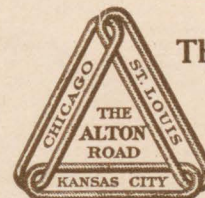
W. S. COOKSON, Assistant General Passenger Agent
135 Adams Street, Chicago, Ill.



A 30-pound Lake Trout, Lake Temagami.



Lake Swan, Bridge and Shady Shores of San Pedro Park, San Antonio



The Chicago & Alton Railroad

"THE ONLY WAY"

FROM

CHICAGO, PEORIA AND INTERMEDIATE CITIES

TO

"San Antonio under Sunny Southern Skies"

For winter tourist fares and illustrated descriptive matter, address

C. R. DAVIDSON, Assistant General Passenger Agent
Rector Building, Clark and Monroe Streets,
Chicago, Illinois.



The best way to go is by the Katy

San Antonio is best reached through St. Louis or Kansas City and the "Katy." It is but a short trip of delightful comfort from either point.

From St. Louis there are two splendid fast Katy trains—the Katy Flyer and the Katy Limited—providing through sleepers and chair cars to San Antonio.

From Kansas City these same splendid trains provide the greatest comfort and the fastest schedules. The Katy Limited—a limited train of unlimited comforts—sets the pace for both comfort and equipment, making the run from Kansas City to San Antonio in 25½ hours and saving a whole night's travel over schedules of other trains.

For cost of tickets, schedules and any information regarding a trip to San Antonio write

**W. S. St. George, General Passenger Agent,
ST. LOUIS, MO.**



CM BIGGERS