

Souvenir
of
Galveston,
Texas.



25

Souvenir of...

GALVESTON, Texas.

PHOTO-GRAVURES

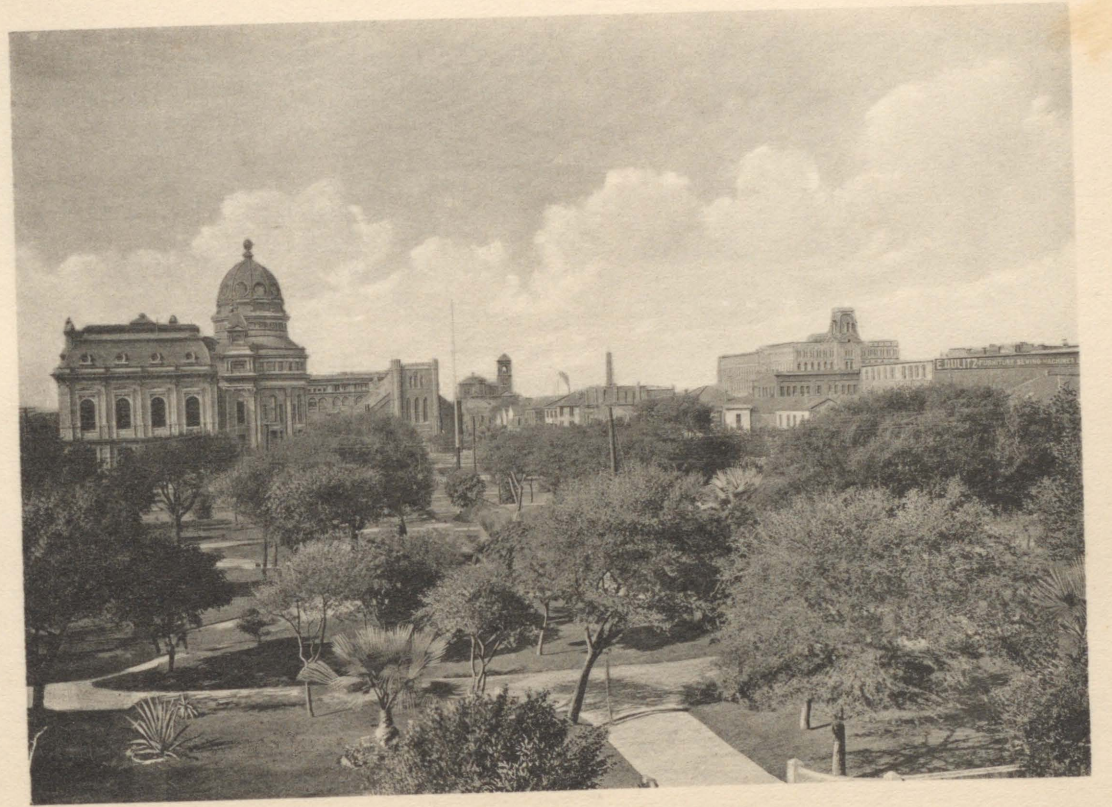

THE ALBERTYPE CO., BROOKLYN, N. Y.



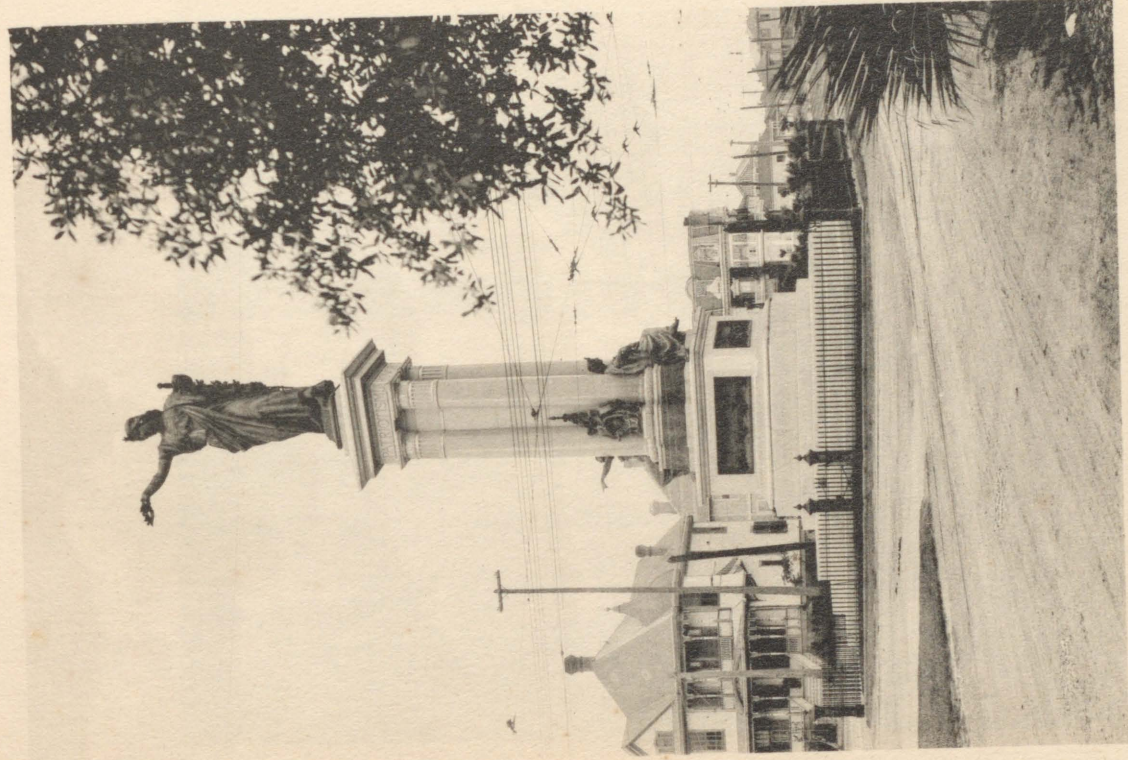
TREMONT STREET, LOOKING NORTH.



HARBOR AND BAY, LOOKING EAST.



BIRDS-EYE VIEW OVERLOOKING CITY PARK.



THE TEXAS HEROES MONUMENT.



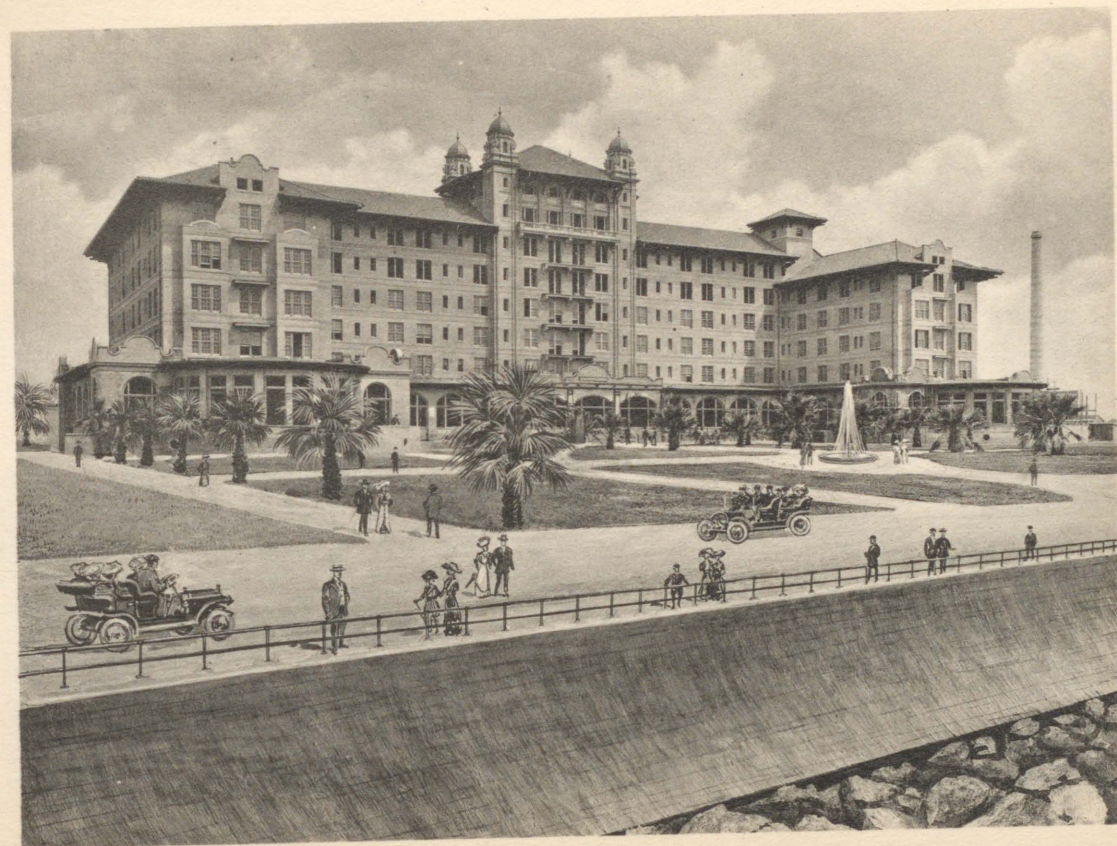
GALVESTON HARBOR, LOOKING WEST.



COTTON AT GALVESTON.



TREMONT STREET AND BALL AVENUE, LOOKING EAST.



HOTEL GALVEZ.



AVENUE L AND TREMONT, LOOKING SOUTH.



ST. MARY'S CATHEDRAL



ESPLANADE ON EAST BROADWAY.



THE SEA WALL.

Length of Wall 4 miles. Height 17 feet, Base 16 feet, Top 5 feet, with concave front. Foundation resting on 4 rows of piling driven down 40 feet, 3 feet apart, with one row sheet piling on water side, driven down 20 feet and protected by an apron of Granite rip rap.



THE SURF BATH HOUSE.



U. S. TROOPS ON SEAWALL BOULEVARD.

THE BEACH.



BATH HOUSES, SEA WALL AND BOULEVARD.

