

VICTORIA, TEXAS

THE CITY OF ROSES

is fast developing into a
commercial and industrial
center backed up by the
best county with the finest
lands in the Coast Country

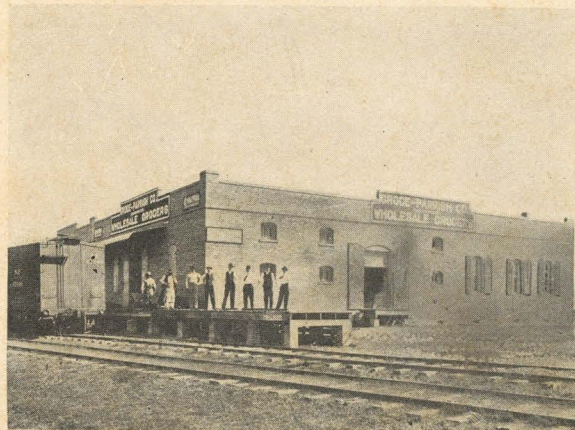
VICTORIA

WILL be the head of navigation on the Guadalupe River, and soon to become one of the largest commercial centers of the South. Get a Texas map and see where it is located. It is surrounded by the most fertile and productive land. The soil in Victoria County is especially adapted to the raising of Alfalfa, Corn and Sugar Cane, and all kinds of Fruit and Garden Truck.

If you are looking for a home or investment where safety is considered, a sure profit is to be had, where there is a future for you and your family, I would like to hear from you without any obligation on your part. I will cheerfully furnish you with a fund of valuable information regarding this GREAT COUNTRY. Write today for my large booklet.

C. S. LACY, *Real Estate Broker*

O'Connor Building, Victoria, Texas



Groce-Parrish Co., Wholesale Grocers



WILL be the
River, an
mercial ce
see where

fertile and produc
especially adapted
Cane, and all kind

If you are loo
is considered, a su
for you and your f
any obligation on
with a fund of va
COUNTRY. V

C. S.

O'C



Cotton Field one mile from Victoria—One bale per acre



T. M. O'Connor Building



WILL be the
River, a
mercial
see where
fertile and produ
especially adapte
Cane, and all kin
If you are lo
is considered, a s
for you and your
any obligation o
with a fund of v
COUNTRY.

C. S.
O



Corn Field near Victoria—Yield from 50 to 75 bushels per acre



Gathering Onions near Victoria—Profit \$300 to \$400 per acre



WILL be
River, a
mercial
see whe
fertile and prod
especially adapte
Cane, and all kin
If you are lo
is considered, a s
for you and your
any obligation o
with a fund of
COUNTRY.

C. S.
O



Orange Trees near Victoria—Five-year-old Trees Yield \$500 per Acre



Victoria is a City of Homes, with many Beautiful Residences

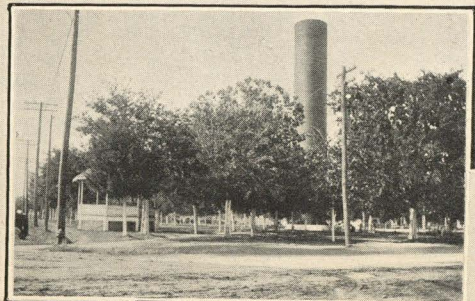


WILL be
River,
mercia
see wh

fertile and pro
especially adap
Cane, and all l

If you are
is considered, a
for you and yo
any obligation
with a fund of
COUNTRY.

C. S.



City Park and River Scene

VICTORIA OPPORTUNITIES.

Victoria, the center of an agricultural empire and the head of navigation on the Guadalupe river is always in the market for new enterprises. Victoria has that market, and any legitimate business coming, with a clean cut proposition, free from any schemes, will gladly be welcomed, and find a friendly endorsement. Among the numerous industries which might be made profitable here might be mentioned a furniture factory to utilize the splendid forests of red elm, pecan, and various oaks which stand in the river bottom; also a box and crate factory. This entire country is undergoing a wonderful transformation in an agricultural way, and truck and fruit gardens and orchards are being put in by the hundreds of acres. There must be packing crates and shipping boxes. Also a cannery to take care of the surplus fruit and truck that will naturally be produced at times, and nothing for the amount of capital invested is more profitable. Contiguous to Victoria are some very fine deposits of shale and clay, and a brick plant properly equipped. would be a paying investment.



WILL be
River,
merc
see w
fertile and pro
especially adap
Cane, and all

If you are
is considered,
for you and yo
any obligation
with a fund o
COUNTRY

C.

A flouring mill, equipped for making the higher grades, would pay. The territory is large and is now served by San Antonio, Galveston and the North. It has been demonstrated that the very finest broom corn that grows is produced in Victoria County, and that the yield is far in advance of the broom corn district of Illinois. A broom factory to use this raw material would likewise be profitable. In like manner might be mentioned a tannery, a boot and shoe factory, wagons and other vehicles, cotton and hosiery mills to use the raw cotton that grows by the thousands of bales on our fertile fields.

WHY COME TO VICTORIA

Because more and better opportunities are offered you for the accumulation of wealth and becoming the contented owner of a happy home than anywhere else. Because there is a great movement of immigration towards the Gulf Coast Country of Texas, and there is but **One Victoria**, and you will get left if you don't hurry. Texas is at the dawn of a new era, and the City of Vic-

toria is soon to be the theatre of an immense activity in manufacturing, commercial and agricultural development. The Gulf of Mexico has suddenly become of worldwide importance as a factor in the commerce of countries. The Panama Canal will soon be finished. The commerce of the world will pass through this canal. The great Ohio, Mississippi and Missouri River Valleys are seeking gulf outlets for their produce. All the great railway systems are looking towards Texas as affording the best ports. Victoria is at the head of navigation on the Guadalupe River and but a short distance from Port O'Connor, the deepest harbor on the Gulf Coast. There is railroad connection between Victoria and Port O'Connor.

There are boundless opportunities here. That is what every man wants—**Opportunity**, and he finds it in **Victoria**. Only the favored few can find it in the overcrowded communities. In mill, factory and shop, in general farming, trucking and fruit growing, the opportunities are full of promise, because of climate, soil, water and rail facilities and raw materials near at hand.

VICTORIA

WILL be the head of navigation on the Guadalupe River, and soon to become one of the largest commercial centers of the South. Get a Texas map and see where it is located. It is surrounded by the most fertile and productive land. The soil in Victoria County is especially adapted to the raising of Alfalfa, Corn and Sugar Cane, and all kinds of Fruit and Garden Truck.

If you are looking for a home or investment where safety is considered, a sure profit is to be had, where there is a future for you and your family, I would like to hear from you without any obligation on your part. I will cheerfully furnish you with a fund of valuable information regarding this GREAT COUNTRY. Write today for my large booklet.

C. S. LACY, *Real Estate Broker*

O'Connor Building, Victoria, Texas



Nazareth Academy

VICTORIA

WILL be the head of navigation on the Guadalupe River, and soon to become one of the largest commercial centers of the South. Get a Texas map and see where it is located. It is surrounded by the most fertile and productive land. The soil in Victoria County is especially adapted to the raising of Alfalfa, Corn and Sugar Cane, and all kinds of Fruit and Garden Truck.

If you are looking for a home or investment where safety is considered, a sure profit is to be had, where there is a future for you and your family, I would like to hear from you without any obligation on your part. I will cheerfully furnish you with a fund of valuable information regarding this GREAT COUNTRY. Write today for my large booklet.

C. S. LACY, Real Estate Broker

O'Connor Building, Victoria, Texas



The Hauschild Music Company and Opera House
Largest Piano and Music House in Southwest Texas. Send for free Catalogue



U. S. Dredge Guadalupe at Work on Guadalupe River

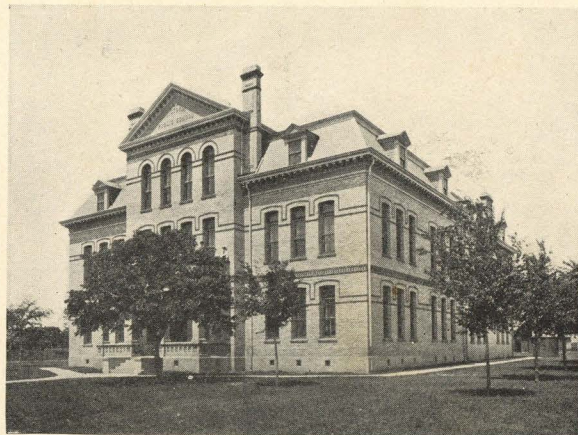
VICTORIA

WILL be the head of navigation on the Guadalupe River, and soon to become one of the largest commercial centers of the South. Get a Texas map and see where it is located. It is surrounded by the most fertile and productive land. The soil in Victoria County is especially adapted to the raising of Alfalfa, Corn and Sugar Cane, and all kinds of Fruit and Garden Truck.

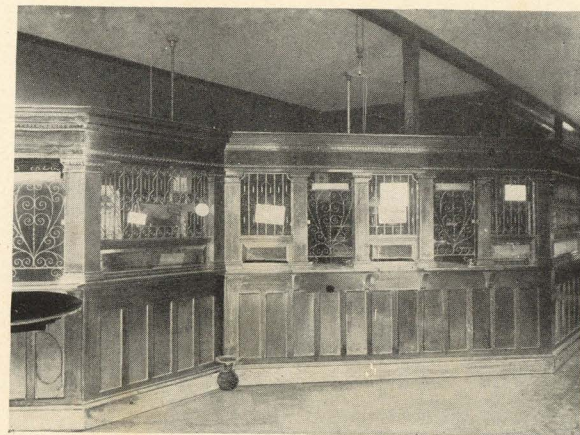
If you are looking for a home or investment where safety is considered, a sure profit is to be had, where there is a future for you and your family, I would like to hear from you without any obligation on your part. I will cheerfully furnish you with a fund of valuable information regarding this GREAT COUNTRY. Write today for my large booklet.

C. S. LACY, *Real Estate Broker*

O'Connor Building, Victoria, Texas



High School Building
Victoria Public Schools are Unexcelled



Interior of Farmers and Merchants Bank

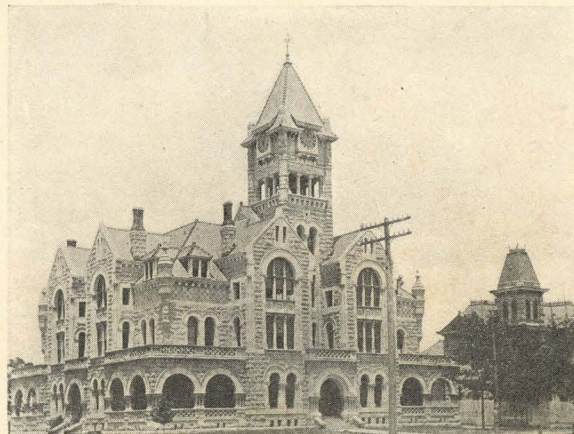
VICTORIA

WILL be the head of navigation on the Guadalupe River, and soon to become one of the largest commercial centers of the South. Get a Texas map and see where it is located. It is surrounded by the most fertile and productive land. The soil in Victoria County is especially adapted to the raising of Alfalfa, Corn and Sugar Cane, and all kinds of Fruit and Garden Truck.

If you are looking for a home or investment where safety is considered, a sure profit is to be had, where there is a future for you and your family, I would like to hear from you without any obligation on your part. I will cheerfully furnish you with a fund of valuable information regarding this GREAT COUNTRY. Write today for my large booklet.

C. S. LACY, *Real Estate Broker*

O'Connor Building, Victoria, Texas



Victoria County Court House
Built of stone, and one of the handsomest in the State



The Proctor-O'Connor Building
J. K. Greer, Jeweler and Optician

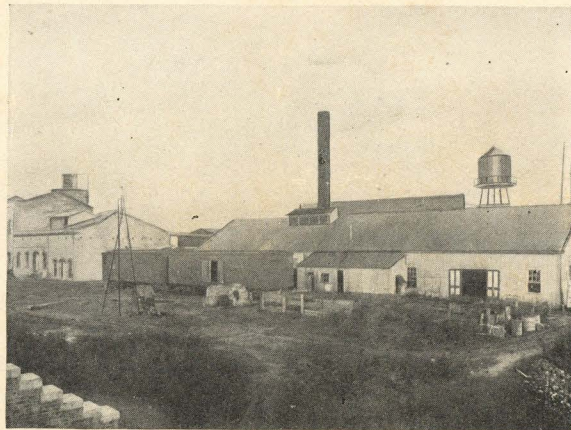
VICTORIA

WILL be the head of navigation on the Guadalupe River, and soon to become one of the largest commercial centers of the South. Get a Texas map and see where it is located. It is surrounded by the most fertile and productive land. The soil in Victoria County is especially adapted to the raising of Alfalfa, Corn and Sugar Cane, and all kinds of Fruit and Garden Truck.

If you are looking for a home or investment where safety is considered, a sure profit is to be had, where there is a future for you and your family, I would like to hear from you without any obligation on your part. I will cheerfully furnish you with a fund of valuable information regarding this GREAT COUNTRY. Write today for my large booklet.

C. S. LACY, *Real Estate Broker*

O'Connor Building, Victoria, Texas



Plant of the Victoria Manufacturing Company



Truck Farm near Victoria

Net income from forty acres in five years from \$2,500 to \$4,000 per year

Compliments of
C. S. LACY
Real Estate Broker
VICTORIA, TEXAS

POSTAGE
United States
and
Possessions,
Canada and
Mexico, 1c
Foreign, 2c