

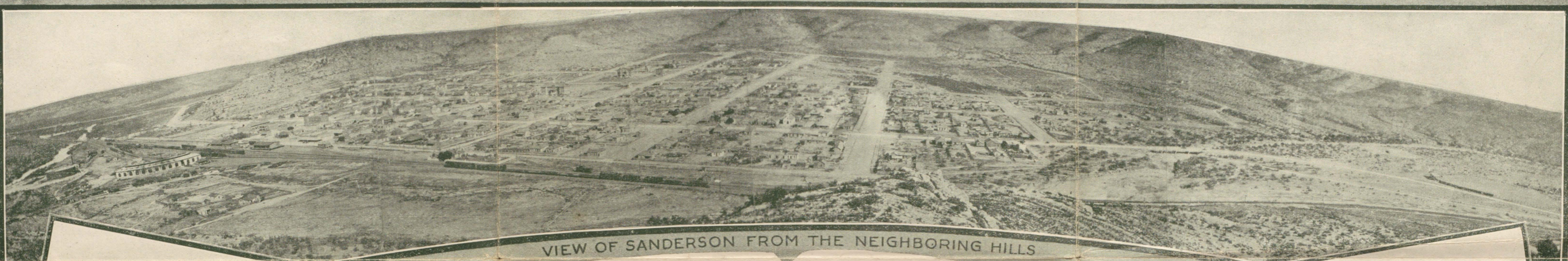


# Janderson

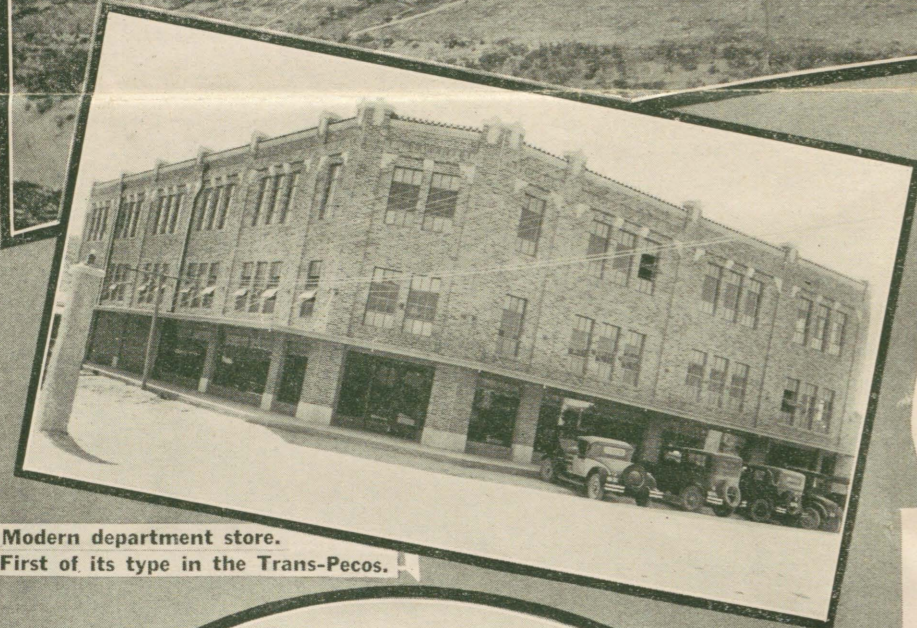
AND  
TERRELL  
COUNTY  
TEXAS







VIEW OF SANDERSON FROM THE NEIGHBORING HILLS



Modern department store.  
First of its type in the Trans-Pecos.

**LOCATION**

Sanderson is a mountain town 25 miles north of old Mexico. It is midway between San Antonio and El Paso on main line of Southern Pacific System and Mexican Border Highway, (Federal No. 90, Texas No. 3). Its geographic location and altitude of 2750 feet give it a climate greatly resembling that of Egypt, and unparalleled in the Southwest. Sanderson is approximately the same latitude as St. Augustine, Fla., and about four degrees latitude south of Los Angeles, Calif.

**INDUSTRY**

Sanderson is a division freight and passenger terminal. This includes round house and shops, a restaurant open 24 hours daily and a high speed telegraph repeater station. Mail and train crews change here. The total of all such affiliated employees is over 220 with an annual payroll exceeding \$360,000.00. A public utility system unit supplies electricity, ice and water. Located here are stock pens, and a large wool and mohair concentration warehouse.

**PETROLEUM**

Terrell County is unusually rich in shale and marine fossil deposits (oyster, clam and mussel shells), snails, etc. Considerable acreage is leased for future oil development. Included in the larger companies holding such leases are: Darby, Dixie, Gibson, Gulf, Houston, Humble, Magnolia, Mid-Kansas, Philips, Roxana, Sinclair, Sun, Trans-Continental, et al. The great Yates pool, largest in America, is but 15 miles distant from our northern boundary line.

**ORGANIZATION**

The population of Sanderson approximates 2,000, and the town (rapidly expanding) is modernized with every convenience. Well equipped stores supply all needs. There are many beautiful homes, good schools (census 497), 4 churches embracing six denominations; 2 brick constructed hotels; bank having resources in excess of \$675,000.00; finest department store in the Trans-Pecos; movie theatre; athletic field; garages; laundry; tourist camp, etc.

**LIVE STOCK**

Sanderson is an important trading centre for a region exclusively devoted to the raising of live stock, and last year shipping 72,172 head together with more than one and one-half million pounds of Wool and Mohair.

Cattle are tended by the picturesque cowboy of the traditional West, Sanderson being the last outpost of the old primitive frontier soon only to be recalled in song and story. In addition to cattle Terrell County raises horses, polo ponies, burros, sheep and Angora goats. Temperate winters, a semi-arid climate growing an abundance of wild weeds and shrubs of peculiar appeal to the appetite of sheep and goat provide year round forage. This gives Terrell County a distinct economic advantage over other regions.

The Sheep and Angora Goats are cared for by humble herders unchanged since Biblical times, usually Mexicans accustomed to isolated camp life.

**GAME**

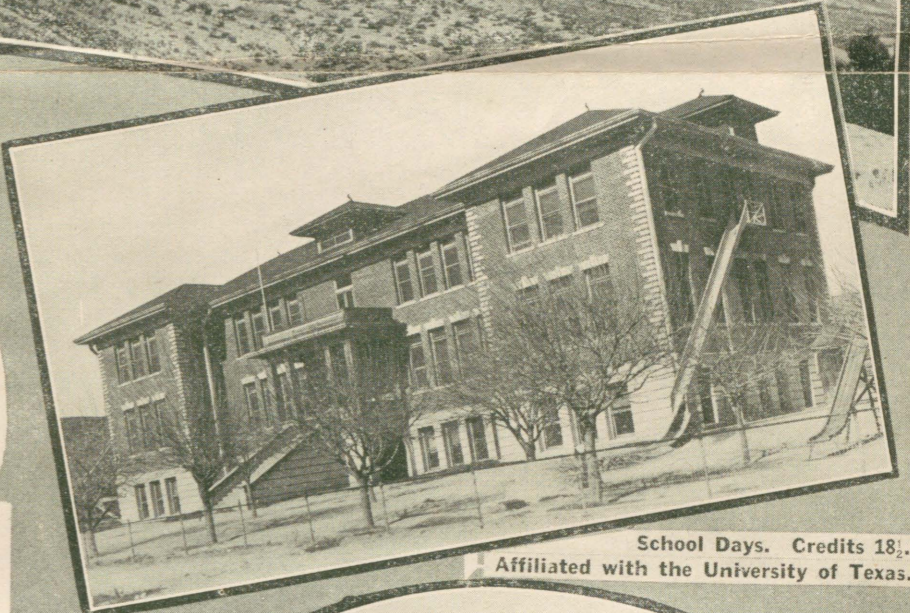
The Southern section of Terrell County is wild. The terrain is broken by deep canyons and steep hills, all clothed with a vegetation protected by healthy thorns. Here the Rio Grande rolls by between perpendicular walls of rock, a natural chasm 600 feet deep embellished in a setting beautiful as ever sculptured by the Great Artist. Game is plentiful including bear, deer, quail and duck. Hundreds of hunters come every year and there is also considerable trapping.

**DESIRABILITY**

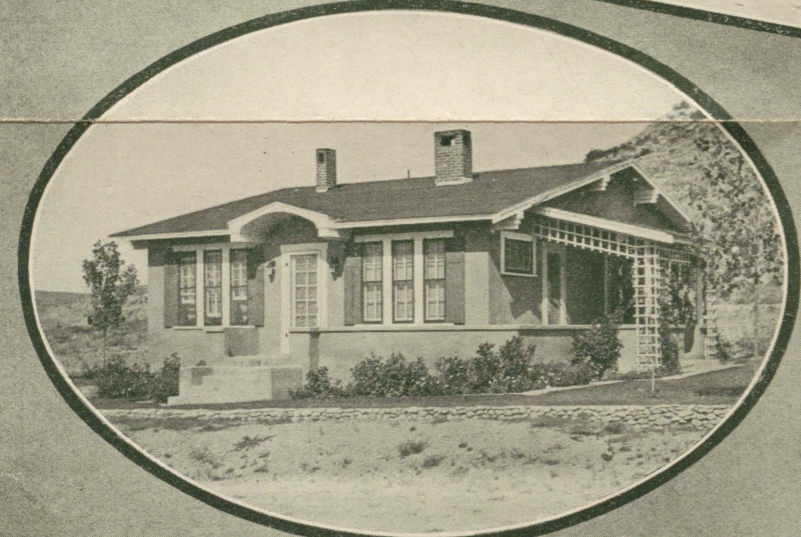
In Terrell County living conditions are excellent. The folk are mostly from the hospitable South and open-hearted West. There are many social, cultural and home clubs as well as fraternal organizations, including Rotary and Boy Scouts. Especial attention has been given to education, and the faculty of our schools is as good as teaching similar grades elsewhere. The curriculum includes 4 years of High School, so that our children are guaranteed a thorough training in the fundamentals.

The goat and sheep industry with its concomitants of wool and mohair offers independence for intelligent effort and moderate capital. The county is unusually adapted to the raising of Angora Goats and Sheep (rugged mountainous land of moderate elevation with illimitable low cost acreage, well fenced and watered). There is an ever growing market for mohair while wool is a staple dependable commodity.

All year the climate is ideal, the surrounding country picturesque and finest imaginable for out door camping. Fishing and hunting are good with highways in splendid shape for travel. We beckon you come for rest, outdoor life and the chance to garner health and wealth under skies of perpetual sunshine.



School Days. Credits 18.  
Affiliated with the University of Texas.



"A Bungalow of Dreams"



Sanderson is seat of Terrell County.



Power Plant and deep wells furnish an abundance of Pure Water.

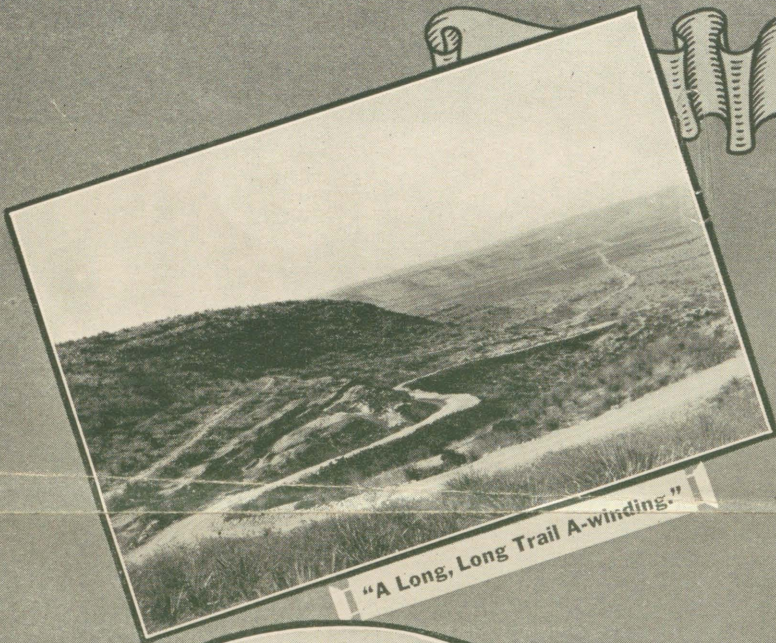


One of our hotels. Steam heat, baths, good food - comfort.





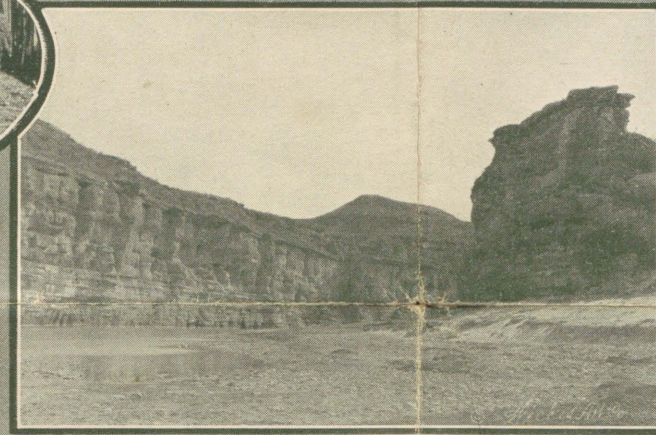
# Scenes in Sanderson and Terrell County



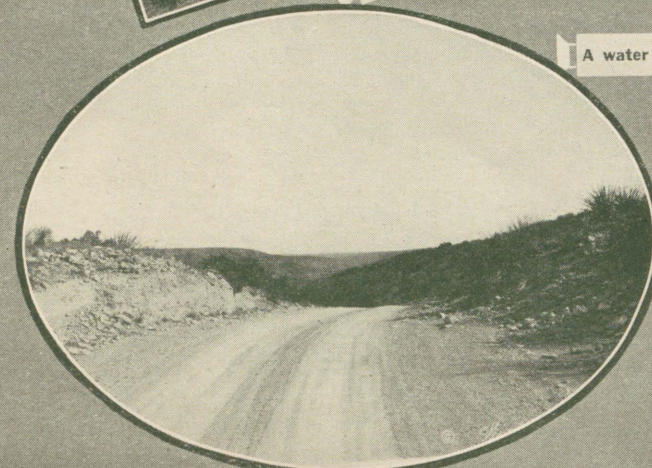
"A Long, Long Trail A-winding."



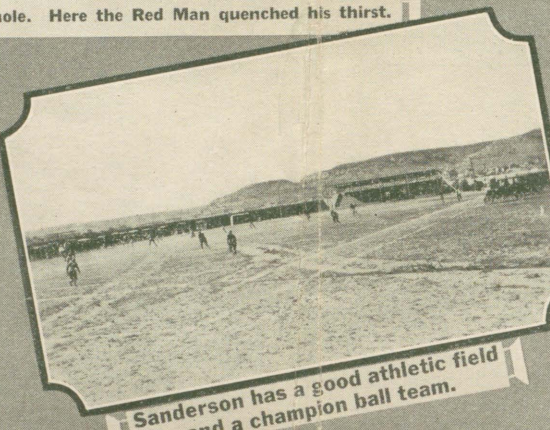
A Prize Winning Terrell County Buck



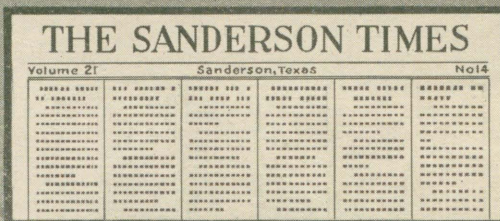
Caliche Roads Fast as the Wind.



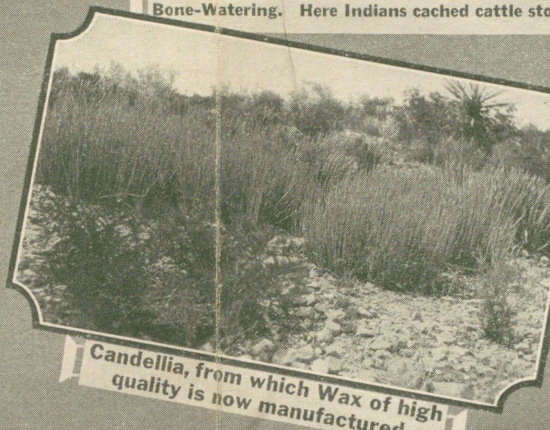
Motoring amid mountain scenery of vividly suggestive charm.



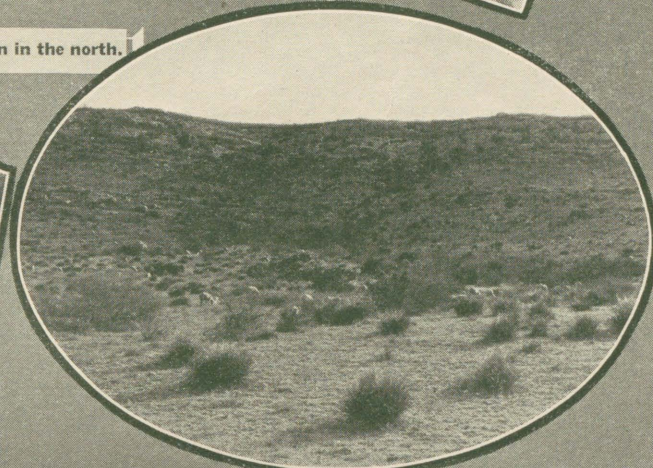
Sanderson has a good athletic field and a champion ball team.



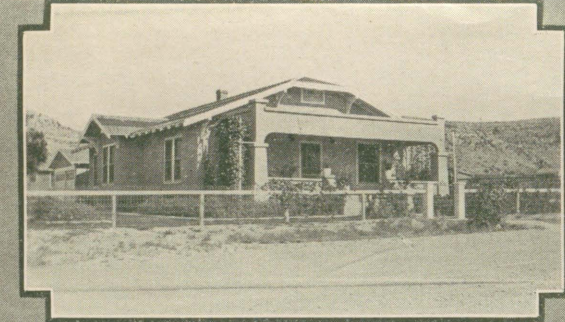
A weekly newspaper is published.



Candellia, from which Wax of high quality is now manufactured.



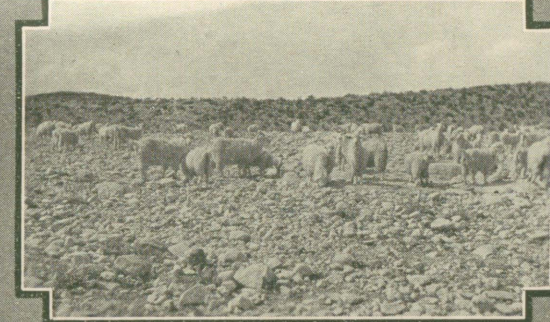
Upwards of 200,000 live stock graze in Terrell County.



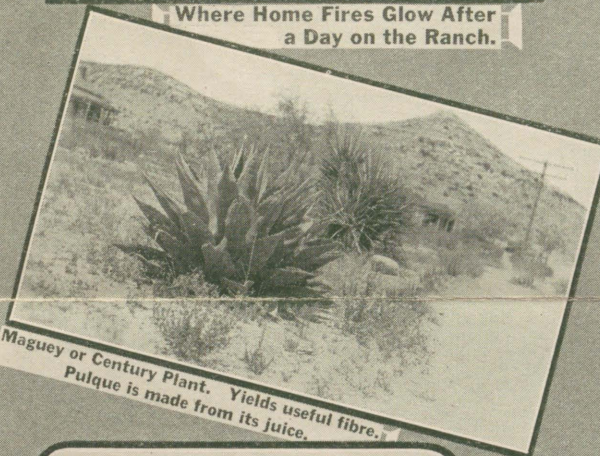
Where Home Fires Glow After a Day on the Ranch.



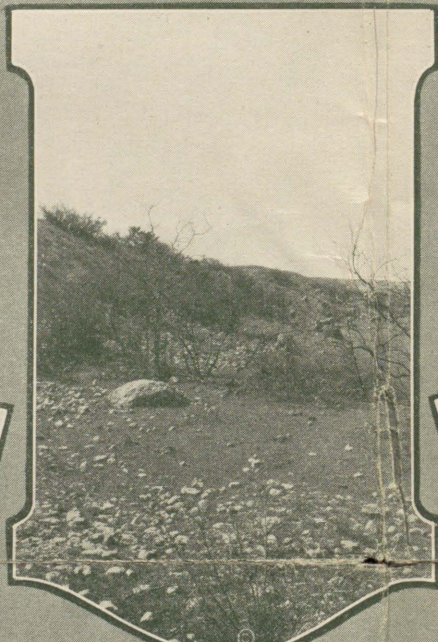
Rocks at Myer Springs with writings from a departed race.



Angora Goats of Good Breed.



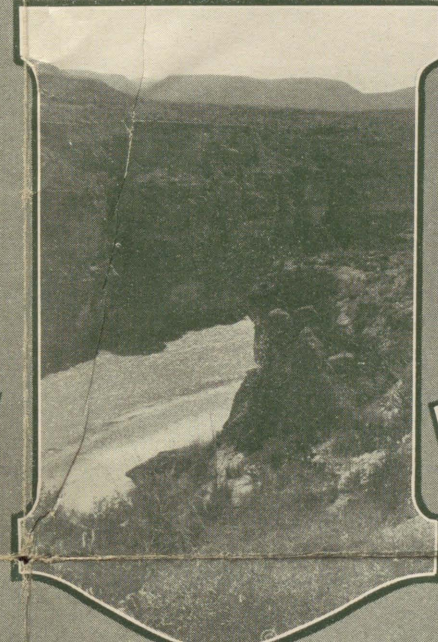
Magvey or Century Plant. Yields useful fibre. Pulque is made from its juice.



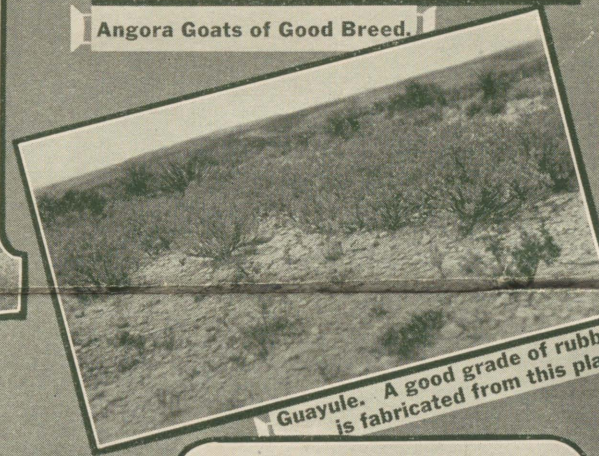
A small patch of Terrell County's 1,800,000 acres.



A Ranch unit. "Headquarters"



The Rio Grande flows through a gorge 600 feet deep.



Guayule. A good grade of rubber is fabricated from this plant.



Ready for Round Up, Rodeo, or Perhaps off to the Dance.



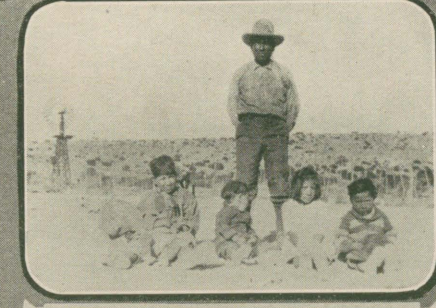
Terrell County has Cattle of Fine Stock.



Lechiguilla. Supplies coarse binder twine.



Bringing in Wool in Ye Olden Days.



A Typical Native Mexican Family.