



# SHEPPARD SURVEYING COMPANY, INC.

TBPELS FIRM # 100277-00

1013 Energy Drive, Abilene, Texas 79602

325-695-6277 • sheppard-survey@sheppard-survey.com

File No. Sketch file no. 29

Mills county  
retracement survey for alleged vacancy

Date filed: 06/26/2025

Commissioner Dawn Buckingham, M.D.  
By: L. Parsons

**MILLS COUNTY**

**SAM DUNCAN**

\*see rolled sketch 7 REPORT OF A RETRACEMENT SURVEY IN SOUTHERN MILLS COUNTY TO DETERMINE THE EXISTENCE AND EXTENT OF AN ALLEGED VACANCY LYING IMMEDIATELY NORTH AND NORTHWEST OF THE L. F. HILL SURVEY, MILAM PREEMPTION-3827, MILLS COUNTY ABSTRACT 379, AND BEARING 12 MILES S 74° E FROM THE COUNTY SEAT AT GOLDTHWAITE, MILLS COUNTY, TEXAS.

*TEXT IN ITALICS REPRESENTS KEY POINTS OF INFORMATION CONSIDERED IN THE RESOLUTION OF THIS SURVEY.*

*SEE ATTACHED SKETCH FOR REFERENCES.*

## **HISTORICAL**

**JUNE 14, 1852**

**JOHN PAINE SURVEY NUMBER 18, MILAM DONATION-879, A-542.**

PATENTED FIELD NOTES BY R. HORNSBY, DEPUTY SURVEYOR OF MILAM DISTRICT.

BEGINNING STONE MOUND IN THE WEST LINE OF SURVEY NUMBER 17 MADE FOR W. L. HATHAWAY, FROM WHICH THE NORTHWEST CORNER BEARS N 19° W 200 VARAS, A LIVE OAK BEARS N 72° W 60 VARAS AND ANOTHER BEARS S 60 1/2° W 25 VARAS. THENCE S 71° W AT 1000 VARAS A STONE MOUND FOR THE SOUTHWEST CORNER FROM WHICH A SPANISH OAK BEARS N 4 1/2° W 24 VARAS, A LIVE OAK BEARS N 35° E 30 VARAS. THENCE N 19° W AT 1160 VARAS CROSS BENNETT'S CREEK, AT 1606 VARAS TO NORTHWEST CORNER NO BEARINGS. THENCE N 71° E 1600 VARAS TO THE NORTHEAST CORNER NO BEARINGS. THENCE S 19° E 1406 VARAS TO THE NORTH LINE OF NUMBER 17. THENCE S 71° W 100 VARAS RE-CROSS BENNETT'S CREEK, 600 VARAS TO THE NORTHWEST CORNER OF NUMBER 17. THENCE S 19° E 200 VARAS TO P.O.B.

**JUNE 14, 1852**

**JOHN PAINE SURVEY NUMBER 19, MILAM BOUNTY-878, A-537.** PATENTED FIELD NOTES BY R. HORNSBY, DEPUTY SURVEYOR OF MILAM DISTRICT.

BEGINNING STAKE ON WEST LINE OF JOHN PAINE NUMBER 18 FROM WHICH THE SOUTHWEST CORNER BEARS S 19° E 860 VARAS AND AN ELM BEARS N 71° E 55 VARAS AND A PECAN BEARS N 75° E AT 60 VARAS. THENCE S 71° W AT 1100 VARAS A STAKE FOR THE SOUTHWEST CORNER FROM WHICH A MESQUITE BEARS S 14° E 25 VARAS, ANOTHER BEARS S 63° E

25 VARAS. THENCE N 19° W AT 1100 VARAS CORNERING ON A LIVE OAK TREE 11" IN DIAMETER FROM WHICH ANOTHER BEARS S 80° W AT ONE VARA. THENCE N 71° E AT 600 VARAS BENNETT'S CREEK AT 1100 VARAS A STONE MOUND FOR THE NORTHEAST CORNER FROM WHICH A FORKED LIVE OAK BEARS S 35° E 42 VARAS. THENCE S 19° E AT 800 VARAS BENNETT'S CREEK AT 1100 VARAS TO P.O.B.

**NOVEMBER 27, 1852**

**WM. DUNBAR SURVEY NUMBER 20, MILAM 2<sup>ND</sup>-490, A-185.** PATENTED FIELD NOTES BY R. HORNSBY, SIGNED BY WM. ARMSTRONG, DISTRICT SURVEYOR OF MILAM DISTRICT, ORIGINALLY CALLED TO BE IN BELL COUNTY THEN CORRECTED TO CORYELL COUNTY.

P.O.B. AT SOUTHWEST CORNER OF SURVEY NUMBER 19 FOR SOUTHEAST CORNER OF THIS. THENCE N 19° W AT 1141 VARAS PASS NORTHWEST CORNER NUMBER 19, AT 1551 VARAS BENNETT CREEK, AT 2041 VARAS A STONE MOUND FOR NORTHEAST CORNER, SPANISH OAK BRS S 33° W 9 VARAS, ANOTHER N 77° W AT 7 VARAS, THENCE S 71° W AT 50 VARAS SPRING BRANCH, AT 535 VARAS BENNETT'S CREEK, AT 1770 VARAS A STONE MOUND FOR NORTHWEST CORNER. SPANISH OAK BEARS N 46° W AT 6 VARAS, ANOTHER BEARS N 84° E AT 12 VARAS. THENCE S 19° E AT 2041 VARAS A STONE MOUND ON A PRAIRIE RIDGE FOR SOUTHEAST (ACTUALLY SOUTHWEST) CORNER [POINT "A"] THENCE N 71° E AT 1770 VARAS TO P.O.B.

**JULY 9, 1857**

**SAMUEL PASCHAL SURVEY NUMBER 42, MILAM 1<sup>ST</sup>-1423, A-525.** PATENTED FIELD NOTES BY WILLIAMSON JONES, DEPUTY SURVEYOR OF MILAM LAND DISTRICT. (NOTE: ON THE MAIN FILE WRAPPER, THE NAME IS SPELLED PASCHAL, HOWEVER THERE ARE SEVERAL VARIATIONS OF THE SPELLING OF THE NAME IN THE DOCUMENTS IN THE FILE, INCLUDING PASCHALL AND PASCAL).

BEGINNING AT A POINT [POINT "C"] 1700 VARAS S 9° W FROM THE SOUTHWEST CORNER OF A SURVEY IN THE NAME OF WILLIAM DUNBAR [POINT "A"] SITUATED IN LAMPASAS COUNTY ON BENNETT'S CREEK A TRIBUTARY OF THE N LAMPASAS RIVER A STONE MOUND FOR THE SOUTHEAST CORNER OF THIS FROM WHICH A LIVE OAK BEARS N 3° W 183 VARAS. THENCE N 19° W 512 VARAS A BRANCH 6 VARAS WIDE, AT 860 VARAS A BRANCH 5 VARAS WIDE, AT 2147 VARAS A STAKE FOR NORTHEAST CORNER FROM WHICH A LIVE OAK BEARS N 22° E AT 43 VARAS, ANOTHER N 5° E AT 50 VARAS. THENCE S 71° W 1150 VARAS A BRANCH 10 VARAS WIDE, AT 2147 VARAS A STONE MOUND FROM WHICH A SPANISH OAK BEARS N 63° W AT 7 VARAS, ANOTHER S 9° E AT 9 VARAS. THENCE S 19° E 2147 VARAS A STONE MOUND [POINT "D"] FROM WHICH A SPANISH OAK BEARS N AT 5 VARAS, ANOTHER S 17° E AT 12 VARAS. THENCE N 71° E 2147 VARAS TO PLACE OF BEGINNING.

*DURING OUR CURRENT SURVEY WE FIND THE DISTANCE FROM THE OCCUPIED SOUTHWEST CORNER OF THE WM. DUNBAR SURVEY NUMBER 20 (MILAM 2<sup>ND</sup>-490, A-185) [POINT "A"] TO THE OCCUPIED SOUTHEAST CORNER OF THE SAMUEL PASCHAL SURVEY NUMBER 42 (MILAM 1<sup>ST</sup>-1423, A-525) [POINT*



"C"] AS GRID S 7°25'34" W 1722.884 VARAS COMPARED TO THE CALL OF S 9° W 1700 VARAS.

JULY 10, 1857

HEIRS OF CHRISTOPHER CHANEY (GRANTEE-CHRISTOPHER CHANCY), MILAM 1<sup>ST</sup>-1424, A-115. PATENTED FIELD NOTES BY WILLIAMSON JONES, DEPUTY SURVEYOR OF MILAM LAND DISTRICT.

P.O.B. AT A POINT [POINT "B"] 3350 VARAS S 9° W FROM THE SOUTHWEST CORNER OF A SURVEY ON BENNETT'S CREEK IN LAMPASAS COUNTY IN THE NAME OF WILLIAM DUNBAR [POINT "A"]. THENCE S 71° W 2650 VARAS TO A STONE MOUND FOR THE NORTHWEST CORNER OF THIS SURVEY [POINT "E"]. THENCE S 19° E 2888 VARAS TO A STONE MOUND FOR THE SOUTHWEST CORNER. THENCE N 71° E 2888 VARAS TO THE SOUTHEAST CORNER A STONE MOUND FROM WHICH A P. O. BEARS N 71° E 21 VARAS, ANOTHER N 76° E 21 VARAS. THENCE N 19° W, 560 VARAS A BRANCH 10 VARA WIDE, 2888 VARAS A STONE MOUND FROM WHICH A SPANISH OAK BEARS S 88° E 5 VARAS ANOTHER S 55° E 5 VARAS. THENCE S 71° W 238 VARAS TO P.O.B.

FROM A CORNER POST HELD FOR THE OCCUPIED NORTHEAST CORNER OF THE CHRISTOPHER CHANEY SURVEY (MILAM 1<sup>ST</sup>-1424, A-115) [POINT "B2"] TO THE SOUTHWEST CORNER OF THE WM. DUNBAR SURVEY NUMBER 20 (MILAM 2<sup>ND</sup>-490, A-185) [POINT "A"] MEASURES GRID S 7°54'22" W AT 3241.253 VARAS AS COMPARED TO A CALL OF S 9° W 3350 VARAS.

**NOTES:** THE SAMUEL PASCHAL SURVEY NUMBER 42 (MILAM 1<sup>ST</sup>-1423, A-525) AND THE CHRISTOPHER CHANEY SURVEY (MILAM 1<sup>ST</sup>-1424, A-115) BOTH TAKE THEIR BEGINNING CALL FROM THE SOUTHWEST CORNER OF THE WM. DUNBAR SURVEY NUMBER 20 (MILAM 2<sup>ND</sup>-490, A-185) [POINT "A"] AND WITH FIELD NOTES DATED ONE DAY APART.

THE POINT OF BEGINNING FOR THE CHRISTOPHER CHANEY SURVEY (MILAM 1<sup>ST</sup>-1424, A-115) IS ON THE NORTH LINE OF THE CHRISTOPHER CHANEY SURVEY (MILAM 1<sup>ST</sup>-1424, A-115) AT A POINT [POINT "B"] 238 VARAS WEST OF ITS NORTHEAST CORNER [POINT "B1"]. THIS POINT IS CALLED AS 3350 VARAS S 9° W FROM THE SOUTHWEST CORNER OF THE WM. DUNBAR SURVEY NUMBER 20 (MILAM 2<sup>ND</sup>-490, A-185) [POINT "A"]. TOTAL EAST-WEST DISTANCE FOR THE CHRISTOPHER CHANEY SURVEY (MILAM 1<sup>ST</sup>-1424, A-115) IS 2888 VARAS.

SEE A SKETCH IN THE VESTUS HORTON SURVEY NUMBER 89 (SCRAP FILE-7669, A-1361), WHERE COUNTY SURVEYOR F. M. LONG SHOWS HAVING RECOVERED A STONE MOUND AT THE NORTHEAST CORNER OF THE CHRISTOPHER CHANEY SURVEY (MILAM 1<sup>ST</sup>-1424, A-115) IN SEPTEMBER OF 1906. LONG INDICATES THE WEST LINE OF THE G. H. & H. RR. CO. SURVEY NUMBER 2 (SCHOOL-62817, A-1242), WHICH IS CALLED COMMON WITH THE EAST LINE OF THE CHRISTOPHER CHANEY SURVEY (MILAM 1<sup>ST</sup>-1424, A-115), AS BEING 710 VARAS WESTERLY OF HIS IDENTIFIED SOUTHEAST CORNER OF THE SAMUEL PASCHAL SURVEY NUMBER 42 (MILAM 1<sup>ST</sup>-1423, A-525), AND WE MEASURE THIS DISTANCE AS 753.89 VARAS TO



THE RECOVERED CORNER POST [POINT "B2"], THIS POST [POINT "B2"] BEING THE OCCUPIED NORTHEAST CORNER OF THE CHRISTOPHER CHANEY SURVEY (MILAM 1<sup>ST</sup>-1424, A-115).

IN A SURVEYORS STATEMENT DATED DECEMBER 20, 1883, BY COUNTY SURVEYOR W. T. SAXON AND FOUND IN THE L. F. HILL SURVEY (MILAM PREEMPTION-3827, A-379) STATES "*MEASURED THE DISTANCE FROM SOUTHWEST CORNER OF THE SAM PASCHAL [POINT "D"] AND THE NORTHWEST CORNER OF THE L. ESSARY SURVEY AND FIND THAT IT IS 1413 VARAS FROM THE NORTH LINE OF THE CHRISTOPHER CHANEY SURVEY, AND THAT THE CORRECTED FIELD NOTES OF THE L. F. HILL SURVEY ARE CORRECT AND SHOWS AS THEY ARE ON THE GROUND*". PER EACH SURVEY'S PATENTED FIELD NOTES, THE NORTH LINE OF THE CHRISTOPHER CHANEY SURVEY (MILAM 1<sup>ST</sup>-1424, A-115), AND THE SOUTH LINE OF THE SAMUEL PASCHAL SURVEY NUMBER 42 (MILAM 1<sup>ST</sup>-1423, A-525), ARE DESCRIBED AS BEING PARALLEL, AND BY THE STATEMENT ABOVE BY SAXON, IT APPEARS AS THOUGH SURVEYOR SAXON IS STATING THE NORTH LINE OF THE CHRISTOPHER CHANEY SURVEY (MILAM 1<sup>ST</sup>-1424, A-115), AND THE SOUTH LINE OF THE SAMUEL PASCHAL SURVEY NUMBER 42 (MILAM 1<sup>ST</sup>-1423, A-525), WERE FOUND AS PARALLEL. DURING THIS SURVEY, WE FIND THE DISTANCE FROM THE OCCUPIED SOUTHWEST CORNER OF THE SAMUEL PASCHAL SURVEY NUMBER 42 (MILAM 1<sup>ST</sup>-1423, A-525) [POINT "D"] TO THE OCCUPIED NORTH BOUNDARY LINE OF THE CHRISTOPHER CHANEY SURVEY (MILAM 1<sup>ST</sup>-1424, A-115) [POINTS "E1-B2"] TO BE 1302.28 VARAS, OR 110.72 VARAS SHORT OF THE SAXON CALL OF 1413 VARAS, WHILE THE DISTANCE FROM THE SOUTH BOUNDARY LINE OF THE SAMUEL PASCHAL SURVEY NUMBER 42 (MILAM 1<sup>ST</sup>-1423, A-525) [POINTS "D-C"] TO THE OCCUPIED NORTHEAST CORNER OF THE CHRISTOPHER CHANEY SURVEY (MILAM 1<sup>ST</sup>-1424, A-115) [POINT "B2"] TO BE 1296.583 VARAS, OR 93.067 VARAS SHORT OF THE SAXON CALL OF 1413 VARAS, AND WITH THESE TWO DISTANCES, WE SHOW THESE LINES ARE NOT FOUND TO BE PARALLEL AS OCCUPIED. THIS 1413 VARAS BEING THE SAME DISTANCE AS FOUND IN CANCELED FIELD NOTES FOR THE I. D. SPAIN SURVEY (MILAM PREEMPTION-5412, A-948), BUT IN LATER PATENTED FIELD NOTES DATED JUNE 1896 BY W. S. MILLER FOR THE I. D. SPAIN SURVEY (MILAM PREEMPTION-5412, A-948) THE DISTANCE IS CALLED AS 1268 VARAS.

**DECEMBER 15, 1859**

**HAMILTON COUNTY SCHOOL LANDS SURVEY NUMBER 3, MILAM 1<sup>ST</sup>-1565, A-311.** CANCELED ORIGINAL FIELD NOTES BY W. F. COTTON. MULTIPLE SETS OF FIELD NOTES, SEE PATENTED FIELD NOTES MADE BY D. M. HOOKS, DATED MARCH 28, 1887.

**DECEMBER 31, 1873**

**JAMES CARTER SURVEY, MILAM PREEMPTION-1361, A-930.** FIELD NOTES BY A. H. BEEKMAN, SURVEYOR OF HAMILTON COUNTY.



BEGINNING AT A POINT 130 VARAS S 19° E FROM NORTHWEST CORNER OF GHOLSON SURVEY. THENCE S 71° W 30 VARAS CROSS SIMMS CREEK, 950 VARAS ROCK MOUND ON PRAIRIE FOR SOUTHWEST CORNER. THENCE N 19° W 950 VARAS ROCK MOUND FOR NORTHWEST CORNER A PECAN BEARS 42° W AT 100 VARAS. THENCE N 71° E AT 170 VARAS SIMMS CREEK, AT 811 VARAS A BRANCH, 950 VARAS A MOUND. A LIVE OAK BEARS N 14° W AT 9 3/5 VARAS. THENCE S 19° E AT 820 VARAS PASS NORTHWEST CORNER GHOLSON SURVEY 950 VARAS TO PLACE OF BEGINNING.

LOCATED SOUTHWEST OF THIS SURVEY AREA.

**JUNE 17, 1874**

**ROBERT CHILDERS SURVEY, MILAM 1<sup>ST</sup>-1891, A-117.** CANCELED FIELD NOTES BY M. B. BEEKMAN, HAMILTON COUNTY SURVEYOR, HAMILTON DISTRICT.

LATER PATENTED ON CORRECTED FIELD NOTES BY SAXON, SEE OCTOBER 8, 1881. THESE NOTES, ALONG WITH A SKETCH, CALL TO TAKE UP ALL THE LAND BETWEEN HAMILTON COUNTY SCHOOL LANDS SURVEY NUMBER 3, (MILAM 1<sup>ST</sup>-1565, A-311) AND THE CHRISTOPHER CHANEY SURVEY (MILAM 1<sup>ST</sup>-1424, A-115), AND INCLUDE LAND ALONG THE NORTH LINE OF THE CHRISTOPHER CHANEY SURVEY (MILAM 1<sup>ST</sup>-1424, A-115), WHICH IS LATER PATENTED INTO THE L. F. HILL SURVEY (MILAM PREEMPTION-3827, A-379). LATER FIELD NOTES AND SKETCHES DO NOT SHOW THIS LAND ALONG THE NORTH LINE OF THE CHRISTOPHER CHANEY SURVEY (MILAM 1<sup>ST</sup>-1424, A-115).

**NOVEMBER 18, 1874**

**LEVI ESSARY SURVEY, MILAM 3<sup>RD</sup>-2413, A-204.** CANCELED FIELD NOTES BY S. C. FORESTER.

BEGINNING AT SOUTHEAST CORNER OF SURVEY NUMBER 42 MADE FOR PASCHAL. THENCE S 19° E 950 VARAS ROCK MOUND FOR CORNER. THENCE S 71° W 950 VARAS A ROCK MOUND FOR CORNER. THENCE N 19° W 950 VARAS A MOUND FOR CORNER IN SOUTH LINE OF PASCHAL. THENCE N 71° E FOR 950 VARAS TO PLACE OF BEGINNING.

LATER PATENTED ON CORRECTED FIELD NOTES BY FORESTER, SEE MARCH 7, 1876, HAVING THE PLACE OF BEGINNING AT THE SOUTHWEST CORNER OF THE SAMUEL PASCHAL SURVEY NUMBER 42 (MILAM 1<sup>ST</sup>-1423, A-525).

**SEPTEMBER 2, 1875**

**E. P. HORTON SURVEY, MILAM PREEMPTION-3209, A-382.** PATENTED FIELD NOTES BY C. C. POWELL, HAMILTON COUNTY SURVEYOR.

BEGINNING AT SOUTHEAST CORNER OF THE C. C. JONES SURVEY ON THE PASCHAL WEST LINE FOR NORTHEAST CORNER OF THIS FROM WHICH A LIVE OAK BEARS N 10° E AT 50 VARAS. THENCE S 19° E 950 VARAS ALONG PASCHAL LINE

TO SOUTHEAST CORNER SPANISH OAK MARKED "X" BEARS S 80° W 9 1/2 VARAS. THENCE S 71° W 950 VARAS SOUTHWEST CORNER ON MOUNTAIN. THENCE N 19° W 950 VARAS CORNER OF THIS AND CORNER OF JONES. THENCE N 71° E 950 VARAS TO PLACE OF BEGINNING.

**MARCH 7, 1876**

**LEVI ESSARY SURVEY, MILAM 3<sup>RD</sup>-2413, A-204.** PATENTED FIELD NOTES BY S. C. FORESTER.

BEGINNING AT SOUTHWEST CORNER OF SURVEY NUMBER 42 MADE FOR PASCHAL. THENCE S 19° E 950 VARAS MOUND FOR SOUTHWEST CORNER. THENCE N 71° E 950 VARAS A MOUND FOR SOUTHEAST CORNER. THENCE N 19° W 950 VARAS A MOUND FOR NORTHEAST CORNER IN SOUTH LINE OF PASCHAL. THENCE S 71° W FOR 950 VARAS TO PLACE OF BEGINNING.

EARLIER CANCELED FIELD NOTES BY FORESTER DATED NOVEMBER 18, 1874, HAVE THE PLACE OF BEGINNING AT THE SOUTHEAST CORNER OF THE SAMUEL PASCHAL SURVEY NUMBER 42 (MILAM 1<sup>ST</sup>-1423, A-525) [POINT "C"], THERE ARE NUMEROUS SETS OF CANCELED FIELD NOTES IN THE FILE. SKETCH ON THE FACE OF THESE FIELD NOTES SHOWS THE RELATION BETWEEN THE SAMUEL PASCHAL SURVEY NUMBER 42 (MILAM 1<sup>ST</sup>-1423, A-525) AND CHRISTOPHER CHANEY SURVEY (MILAM 1<sup>ST</sup>-1424, A-115).

**JANUARY 13, 1878**

**L. F. HILL SURVEY, MILAM PREEMPTION-3827, A-379.** CANCELED FIELD NOTES BY W. T. SAXON, COUNTY SURVEYOR OF HAMILTON COUNTY.

BEGINNING 400 VARAS N 71° E FROM NORTHWEST CORNER OF SURVEY IN THE NAME OF C. CHANEY A STONE MOUND FROM WHICH A L. O. MARKED "H" BEARS N 9° E 70 VARAS, A SP. O. MARKED "X" BEARS N 72° E AT 71 VARAS. THENCE N 19° W 626 VARAS A STONE MOUND ON MOUNTAIN. THENCE N 71° E 626 VARAS A STONE MOUND ON WEST LINE OF A 160 ACRE SURVEY IN NAME OF L. ESSARY, L. O. MARKED "H" BEARS N 33° W AT 73 VARAS. THENCE S 19° E 163 VARAS TO SOUTHWEST CORNER OF SAID ESSARY SURVEY. THENCE N 71° E 1104 VARAS TO A STONE MOUND NEAR ROAD FROM WHICH A SP O. BEARS N 19° W 4 VARAS. THENCE S 19° E 463 VARAS TO A STONE MOUND ON NORTH LINE C. CHANEY SURVEY FROM WHICH A LIVE OAK MARKED "H" BEARS N 87 1/2° W 20 VARAS. THENCE S 71° W 1730 VARAS TO P.O.B.

**JANUARY 30, 1881**

**L. F. HILL SURVEY, MILAM PREEMPTION-3827, A-379.** CANCELED FIELD NOTES BY W. T. SAXON, COUNTY SURVEYOR OF HAMILTON COUNTY.

BEGINNING 400 VARAS N 71° E FROM NORTHWEST CORNER OF SURVEY IN THE NAME OF C. CHANEY A STONE MOUND FROM WHICH A L. O. MARKED "H" BEARS N 9° E 70 VARAS, A SP. O. BEARS N 71° E AT 72 VARAS. THENCE N 19° W



626 VARAS A STONE MOUND ON MOUNTAIN. THENCE N 71° E 626 VARAS A STONE MOUND ON EAST LINE OF A 160 ACRE SURVEY IN NAME OF L. ESSARY, L. O. BEARS N 33° W AT 73 VARAS. THENCE S 19° E 163 VARAS TO SOUTHWEST CORNER OF SAID ESSARY SURVEY A STONE MOUND. THENCE N 71° E 1104 VARAS TO A STONE FROM WHICH A SP O. BEARS N 19° W 4 VARAS. THENCE S 19° E 463 VARAS TO A STONE MOUND ON NORTH LINE C. CHANEY SURVEY FROM WHICH A LIVE OAK MARKED "H" BEARS N 87 1/2° W 20 VARAS. THENCE S 71° W 1730 VARAS TO P.O.B.

**NOTE:** FIELD NOTES ALSO CONTAIN A WRITTEN EXPLANATION "THIS SURVEY WAS MADE ON THE GROUND AND CONNECTIONS GIVEN AS FOUND. I MADE THE CONNECTION FROM THE SOUTHWEST CORNER OF THE PASCHAL TO THE NORTH LINE OF C. CHANEY ALONG WEST LINE OF L. ESSARY, AND HERE-WITH ATTACH A SKETCH SHOWING THE POSITION OF THESE SURVEYS AND THE SURVEYS THAT CONNECT THEM." UNDER DATE ON FIELD NOTES IS A NOTATION "CORRECTED DECEMBER 20, 1882".

**OCTOBER 8, 1881**

**ROBERT CHILDERS SURVEY, MILAM 1<sup>ST</sup>-1891, A-117.** PATENTED, CORRECTED FIELD NOTES BY W. T. SAXON, DATED OCTOBER 8, 1881. FIELD NOTES INCLUDE A SKETCH SHOWING SEVERAL SURROUNDING SURVEYS AND THERE IS AN ADDITIONAL SKETCH IN THE FILE WITH AN EXPLANATION MADE BY W. T. SAXON DATED JANUARY 5, 1882.

BEGINNING AT SOUTHEAST CORNER OF HAMILTON COUNTY SCHOOL LANDS NUMBER 3, A LIVE OAK BEARS S 80° W 42 VARAS, ANOTHER S 30° W 39 VARAS. THENCE S 71° W 215 VARAS A STONE MOUND NORTHEAST CORNER OF J. J. MATHEWS SURVEY FROM WHICH A LIVE OAK MARKED "X" BEARS S 73° W AT 10 VARAS AND ANOTHER BEARS S 13° E AT 15 VARAS. THENCE S 19° E ALONG EAST LINE OF MATHEWS AND IN PART THE A. GHOLSON, 1400 VARAS TO A STONE MOUND THE NORTHWEST CORNER OF THE N. R. BRISTER SURVEY. THENCE N 71° E FOR 950 VARAS TO THE NORTHEAST CORNER OF BRISTER. THENCE S 19° E AT 50 VARAS CROSS A BRANCH, AT 150 VARAS A STONE MOUND FOR CORNER IN EAST LINE SAID BRISTER. THENCE N 71° E IN PART WITH NORTH LINE OF D. COIT SURVEY 1715 VARAS TO A STONE MOUND THE EXTREME SOUTHEAST CORNER OF THIS AND SOUTHWEST CORNER OF A PREEMPTION SURVEY. THENCE N 19° W 800 VARAS A STONE MOUND ON THE SOUTH LINE OF C. CHANEY SURVEY FROM WHICH A LIVE OAK MARKED "L" BEARS N 71° E AT 45 VARAS. THENCE S 71° W 1115 VARAS TO SOUTHWEST CORNER OF SAID CHANEY SURVEY. THENCE N 19° W AT 2888 VARAS PASS SAID CHANEY NORTHWEST CORNER, AT 3070 1/2 VARAS A STONE MOUND NEAR A BRANCH FOR EXTREME NORTHEAST CORNER. THENCE S 71° W 1335 VARAS A MOUND IN EAST LINE OF HAMILTON COUNTY SCHOOL LAND FROM WHICH A POST OAK MARKED "X" BEARS S 19° E AT 57 VARAS. THENCE S 19° E FOR 2340 1/2 VARAS TO PLACE OF BEGINNING.

THIS FILE INCLUDES SEVERAL SETS OF CANCELED FIELD NOTES, AS WELL AS MULTIPLE ANNOTATIONS WITHIN THOSE FIELD NOTES. IN ADDITION TO THE CANCELED FIELD NOTES BY BRINKMAN DATED JUNE 17, 1874, THERE IS A SKETCH COVERING LANDS NORTH AND WEST OF THE CHRISTOPHER CHANEY SURVEY (MILAM 1<sup>ST</sup>-1424, A-115) AND THE L. F.



HILL SURVEY (MILAM PREEMPTION-3827, A-379), THESE TWO SURVEYS BEING THE SUBJECT OF THIS PROJECT. THIS FILE ALSO INCLUDES CANCELED FIELD NOTES BY S. C. FORESTER DATED NOVEMBER 1874 AND MARCH 7, 1876.

**DECEMBER 20, 1883**

**L. F. HILL SURVEY, MILAM PREEMPTION-3827, A-379.** PATENTED FIELD NOTES BY W. T. SAXON, COUNTY SURVEYOR OF HAMILTON COUNTY.

BEGINNING AT THE SOUTHWEST CORNER OF THE L. ESSARY SURVEY ~~1104 VARAS A STONE MOUND FROM WHICH~~ (STRIKETHROUGH ON FIELDNOTES) THENCE N 71° E PARTIALLY ALONG SOUTH LINE OF SAID SURVEY 1104 VARAS TO A STONE MOUND FROM WHICH A SPANISH OAK MARKED "X" BEARS N 19° W AT 4 VARAS. THENCE S 19° E 463 VARAS TO A STONE MOUND ON NORTH LINE OF CHRISTOPHER CHANEY SURVEY FROM WHICH A L. O. MARKED "H" BEARS N 87 1/2° W 20 VARAS. THENCE S 71° W ALONG NORTH LINE OF SAID SURVEY 1730 VARAS TO A STONE MOUND FROM WHICH A L. O. MARKED "H" BEARS N 9° E 70 VARAS AND A SP. OAK BEARS N 72° E AT 71 VARAS. THENCE N 19° W 626 VARAS A STONE MOUND ON MOUNTAIN. THENCE N 71° E 626 VARAS A STONE MOUND ON THE WEST LINE OF L. ESSARY FROM WHICH A LIVE OAK MARKED "H" BEARS N 33° W AT 73 VARAS. THENCE S 19° E 163 VARAS TO P.O.B.

**NOTE:** IN ALL THREE SETS OF FIELD NOTES FOR THE L. F. HILL SURVEY (MILAM PREEMPTION-3827, A-379), SURVEYOR SAXON USES THE SAME BEARING/DISTANCE AND CORNER CALLS WITH THE ONLY EXCEPTION BEING THE PLACE OF BEGINNING IN THE FINAL AND PATENTED FIELD NOTES, DATED DECEMBER 20, 1883. ON THE FACE OF THE FIELD NOTES DATED JANUARY 30, 1881 (WHICH HAS A NOTATION OF A CORRECTION DATED DECEMBER 20, 1882), THERE IS A SKETCH SHOWING THE SOUTHWEST CORNER OF THE L. F. HILL SURVEY (MILAM PREEMPTION-3827, A-379) AT THE SOUTHERNMOST SOUTHEAST CORNER OF THE J. N. COFFEY SURVEY (LATER CALLED THE J. A. Q. PALMER SURVEY, MILAM PREEMPTION-5120, A-763), BEING 400 VARAS EAST OF THE NORTHWEST CORNER OF THE CHRISTOPHER CHANEY SURVEY (MILAM 1<sup>ST</sup>-1424, A-115). BY THIS SKETCH, W. T. SAXON SHOWS HE INTENDS TO ADJOIN THE LEVI ESSARY SURVEY (MILAM 3<sup>RD</sup>-2413, A-204) TO THE NORTH AND HE ALSO INDICATES VACANT LAND TO THE EAST IN THE AREA NOW COVERED BY THE I. D. SPAIN SURVEY (MILAM PREEMPTION-5412, A-948). ON THE SKETCH DRAWN ON THE DECEMBER 20<sup>TH</sup> 1883 FIELD NOTES, THE SKETCH DOES NOT SHOW THE 400 VARA CALL FROM THE NORTHWEST CORNER OF THE CHRISTOPHER CHANEY SURVEY (MILAM 1<sup>ST</sup>-1424, A-115), BUT AGAIN CLEARLY SHOWS SAXON'S INTENT TO ADJOIN THE LEVI ESSARY SURVEY (MILAM 3<sup>RD</sup>-2413, A-204) AS CALLED FOR BY SAXON'S FIELD NOTES.

**MARCH 28, 1887**

**HAMILTON COUNTY SCHOOL LAND NUMBER 3, MILAM 1<sup>ST</sup>-1565, A-311.**

PATENTED FIELD NOTES BY D. M. HOOKS, HAMILTON COUNTY SURVEYOR.



**NOTE:** W. T. SAXON LISTED AS CHAINMAN. THESE FIELD NOTES READ AS TO FILL IN FITTING THE SURROUNDING SURVEYS.

SEE CANCELED FIELD NOTES BY HOOKS, WITH SKETCH, OCTOBER 23, 1885, CANCELED FIELD NOTES BY HOOKS, SEPTEMBER 3, 1885, CANCELED FIELD NOTES BY C. C. POWELL, SEPTEMBER 1877, CANCELED FIELD NOTES BY BRINKMAN, MAY 21, 1874, AND CANCELED FIELD NOTES BY W. L. COTTON, DECEMBER 16, 1859.

**APRIL 25, 1887**

**CATHARINE ALLEN SURVEY NUMBER 1, MILAM SCRIP-3170, A-8.**

PATENTED FIELD NOTES BY D. M. HOOKS, HAMILTON COUNTY SURVEYOR.

BEGINNING AT THE NORTHEAST CORNER OF HAMILTON COUNTY SCHOOL LANDS NUMBER 3, A STONE MOUND ON MOUNTAIN. THENCE S 19° E 1208 VARAS NORTHWEST CORNER OF ROBERT CHILDERS SURVEY STONE MOUND IN EAST LINE OF SAID H. C. S. L. NUMBER 3, FOR SOUTHWEST CORNER OF THIS SURVEY. THENCE N 71° E 1335 VARAS STONE MOUND FOR THE NORTHEAST CORNER OF SAID CHILDERS SURVEY SOUTHEAST CORNER OF THIS AND WEST LINE OF THE J. N. COFFEY SURVEY FROM WHICH THE NORTHWEST CORNER OF THE C. CHANEY SURVEY BEARS S 19° E 182 VARAS. THENCE N 19° W 1080 VARAS TO THE NORTHWEST CORNER OF SAID COFFEY SURVEY STONE MOUND FOR CORNER. THENCE N 71° E 1026 VARAS TO NORTHEAST CORNER OF SAID COFFEY. THENCE S 19° E 231 VARAS STONE MOUND ON EAST LINE OF SAID COFFEY SURVEY FOR A CORNER OF THIS. THENCE N 71° E 425 VARAS A STONE MOUND IN WEST LINE OF L. ESSARY SURVEY FOR THE SOUTHEAST CORNER THIS SURVEY. THENCE N 19° W AT 247 VARAS PASS THE SOUTHWEST CORNER OF SAM PASCHAL SURVEY, AT 961 VARAS SOUTHEAST CORNER OF E. P. HORTON SURVEY STONE MOUND IN WEST LINE OF THE PASCHAL SURVEY FOR A CORNER OF THIS SURVEY. THENCE S 71° W 950 VARAS SOUTHWEST CORNER OF SAID HORTON SURVEY A STONE MOUND FOR A CORNER OF THIS SURVEY. THENCE S 19° E 15 VARAS STONE MOUND FOR A CORNER OF THIS SURVEY. THENCE S 71° W 1944 VARAS STONE MOUND IN EAST LINE OF 160 ACRE PREEMPTION SURVEY MADE FOR G. P. RUSSELL FOR THE NORTHWEST CORNER OF THIS SURVEY. THENCE S 19° E 587 VARAS TO THE SOUTHEAST CORNER OF SAID RUSSELL SURVEY A STONE MOUND ON NORTH LINE OF H. C. S. L. NUMBER 3 FOR A CORNER OF THIS SURVEY. THENCE N 71° E 108 VARAS TO P.O.B.

SEE FIELD NOTES FOR J. A. Q. PALMER SURVEY (MILAM PREEMPTION-5120, A-763). DATED JUNE 25, 1887.

**NOTES:** THE 6<sup>th</sup> CALL OF 231 VARAS FROM THE NORTHEAST CORNER OF THE J. N. COFFEY SURVEY (LATER CALLED THE J. A. Q. PALMER SURVEY, MILAM PREEMPTION-5120, A-763), DOES NOT REACH THE SOUTHEAST CORNER OF THE J. N. COFFEY SURVEY (LATER CALLED THE J. A. Q. PALMER SURVEY, MILAM PREEMPTION-5120, A-763)/NORTH LINE OF THE L. F. HILL SURVEY (MILAM PREEMPTION-3827, A-379).

THE 7<sup>th</sup> CALL OF 425 VARAS BETWEEN THE EAST LINE OF THE J. N. COFFEY SURVEY (LATER CALLED THE J. A. Q. PALMER SURVEY, MILAM PREEMPTION-5120, A-763) AND THE WEST LINE OF THE LEVI ESSARY

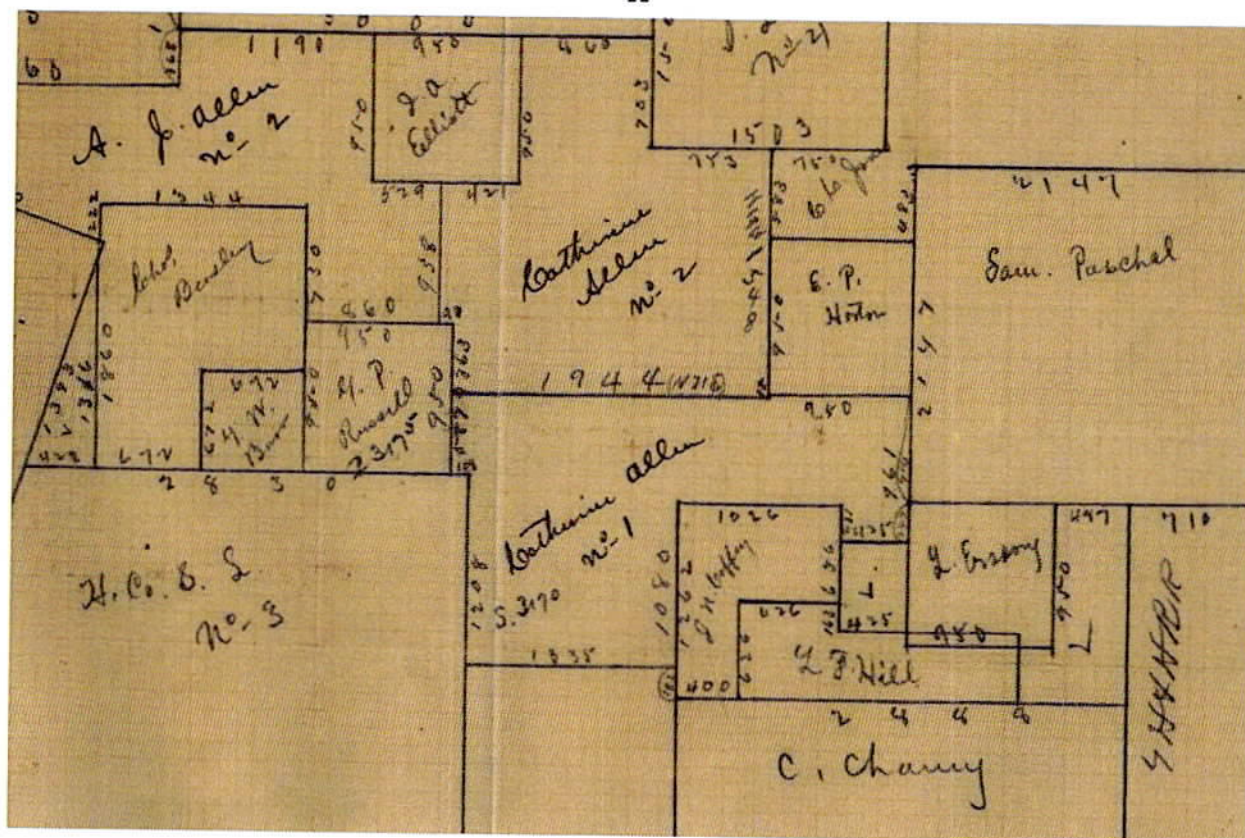




SURVEY (MILAM 3<sup>RD</sup>-2413, A-204), LEAVING UN-SURVEYED LAND LABELED "V" AS SHOWN ON MAP "A".

MAP "A" IS FOUND IN THE FILES OF THE CATHARINE ALLEN SURVEY NUMBER 1 (MILAM SCRIP-3170, A-8), DATED MAY 1889, SHOWING THE L. F. HILL (MILAM PREEMPTION-2413, A-204) ADJOINING THE J. N. COFFEY SURVEY (LATER CALLED THE J. A. Q. PALMER SURVEY, MILAM PREEMPTION-5120, A-763), OVERLAPPING THE LEVI ESSARY SURVEY (MILAM 3<sup>RD</sup>-2413, A-204), AND SHOWING THE "V" MENTIONED IN THE NOTE ABOVE.

MAP  
"A"



JUNE 25, 1887

J. A. Q. PALMER SURVEY, MILAM PREEMPTION-5120, A-763. PATENTED  
FIELD NOTES BY D. M. HOOKS, HAMILTON COUNTY SURVEYOR.

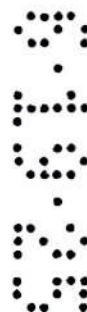
BEGINNING AT THE NORTHWEST CORNER OF THE C. CHANEY SURVEY A STONE MOUND IN THE EAST LINE OF THE ROBERT CHILDRESS SURVEY FOR THE SOUTHWEST CORNER OF THIS. THENCE N 19° W AT 180 VARAS PASS THE NORTHEAST CORNER OF SAID CHILDERS SURVEY, AT 1262 VARAS A STONE MOUND FOR THE NORTHWEST CORNER OF THIS SURVEY AND A CORNER OF SURVEY NUMBER 1 MADE FOR CATHARINE ALLEN. THENCE N 71° E 1026 VARAS A STONE MOUND FOR THE



NORTHEAST CORNER OF THIS SURVEY AND A CORNER OF THE CATHARINE ALLEN SURVEY. THENCE S 19° E 636 VARAS TO NORTHEAST CORNER OF L. F. HILLS PREEMPTION STONE MOUND FOR EAST-SOUTHEAST CORNER OF THIS SURVEY FROM WHICH A L. O. MARKED "H" BEARS N 33° W 73 VARAS. THENCE S 71° W 626 VARAS NORTHWEST CORNER OF SAID HILL SURVEY A STONE MOUND AS A CORNER OF THIS SURVEY. THENCE S 19° E 626 VARAS A STONE MOUND ON THE NORTH LINE OF C. CHANEY SURVEY FOR SOUTHEAST CORNER OF THIS AND SOUTHWEST CORNER OF SAID HILL SURVEY, A L. O. MARKED "H" BEARS N 9° E 70 VARAS AND SP. O. BEARS N 72° E 71 VARAS. THENCE S 71° W 400 VARAS TO P.O.B.

THE FILE FOR THIS SURVEY INCLUDES A CERTIFICATION AS TO THE ACTUAL SETTLEMENT BY PALMER EVEN THOUGH THE LAND DESCRIBED IS MUCH OF THE SAME AREA CALLED TO BE THE J. N. COFFEY SURVEY (LATER CALLED THE J. A. Q. PALMER SURVEY, MILAM PREEMPTION-5120, A-763).

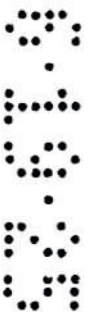
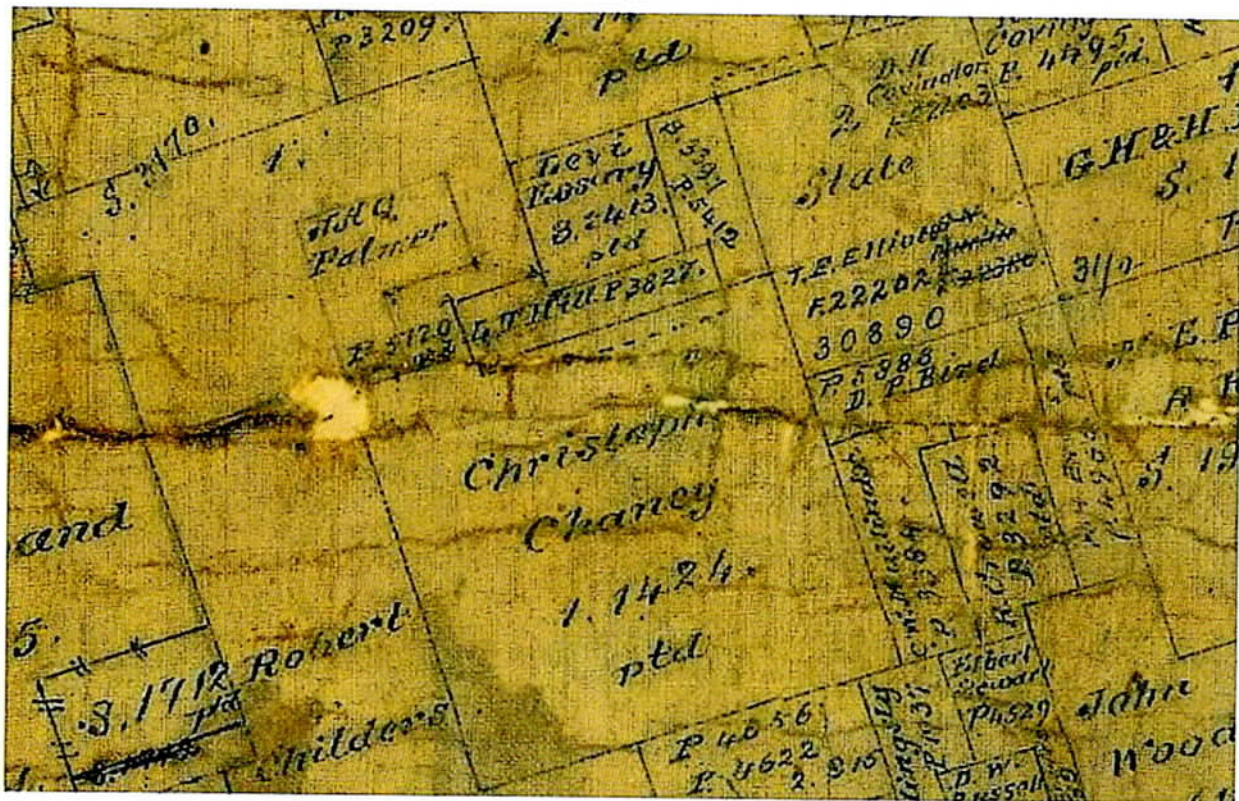
SURVEYOR HOOKS BEGAN THIS J. A. Q. PALMER SURVEY (MILAM PREEMPTION-5120, A-763) AT THE NORTHWEST CORNER OF THE CHRISTOPHER CHANEY SURVEY (MILAM 1<sup>ST</sup>-1424, A-115), AND THEN CONTINUED ALONG ESTABLISHING THE J. A. Q. PALMER SURVEY (MILAM PREEMPTION-5120, A-763), BASING HIS LAST CALL UPON THE DISTANCE GIVEN ON THE SKETCH IN THE CANCELED FIELD NOTES FOR THE L. F. HILL SURVEY (MILAM PREEMPTION-3827, A-379), DATED JANUARY 30, 1881. BECAUSE THE CANCELED FIELD NOTES AND THE CORRECTED FIELD NOTES FOR THE L. F. HILL SURVEY (MILAM PREEMPTION-3827, A-379) ARE IDENTICAL IN COURSE, DISTANCE, AND WITNESSES, THE ONLY DIFFERENCE BEING THE PLACE OF BEGINNING, IT IS POSSIBLE SURVEYOR HOOKS TOOK THE 400 VARA CALL ON THE SOUTH LINE OF THE J. N. COFFEY SURVEY (LATER CALLED THE J. A. Q. PALMER SURVEY, MILAM PREEMPTION-5120, A-763) FROM THE **CANCELED** FIELD NOTES. THESE COURSES AND DISTANCES DO NOT REACH THE L. F. HILL SURVEY (MILAM PREEMPTION-3827, A-379) PATENTED POSITION AS GIVEN, YET THE J. A. Q. PALMER SURVEY (MILAM PREEMPTION-5120, A-763) IS STILL CALLED AS AN ADJOINER TO THE L. F. HILL SURVEY (MILAM PREEMPTION-3827, A-379).





MAP "B" IS A PART OF GENERAL LAND OFFICE DOCUMENT 78439, MILLS COUNTY MAP, DATED AUGUST 1887, SHOWING THE L. F. HILL SURVEY (MILAM PREEMPTION-3827, A-379), BEING SOME SCALED 850 VARAS EAST OF THE NORTHWEST CORNER OF THE CHRISTOPHER CHANEY SURVEY (MILAM 1<sup>ST</sup>-1424, A-115) WHILE ADJOINING THE LEVI ESSARY SURVEY (MILAM 3<sup>RD</sup>-2413, A-204) (THIS SCALED DISTANCE DETERMINED USING NEIGHBORING SURVEYS ON THIS SKETCH AS A GENERAL REFERENCE), AS WELL AS CONFLICTING WITH THE NORTH LINE OF THE CHRISTOPHER CHANEY SURVEY (MILAM 1<sup>ST</sup>-1424, A-115). THIS SKETCH ALSO INDICATES A GAP OR VACANT PIECE OF LAND BETWEEN THE J. A. Q. PALMER SURVEY (MILAM PREEMPTION-5120, A-763) AND THE L. F. HILL SURVEY (MILAM PREEMPTION-3827, A-379).

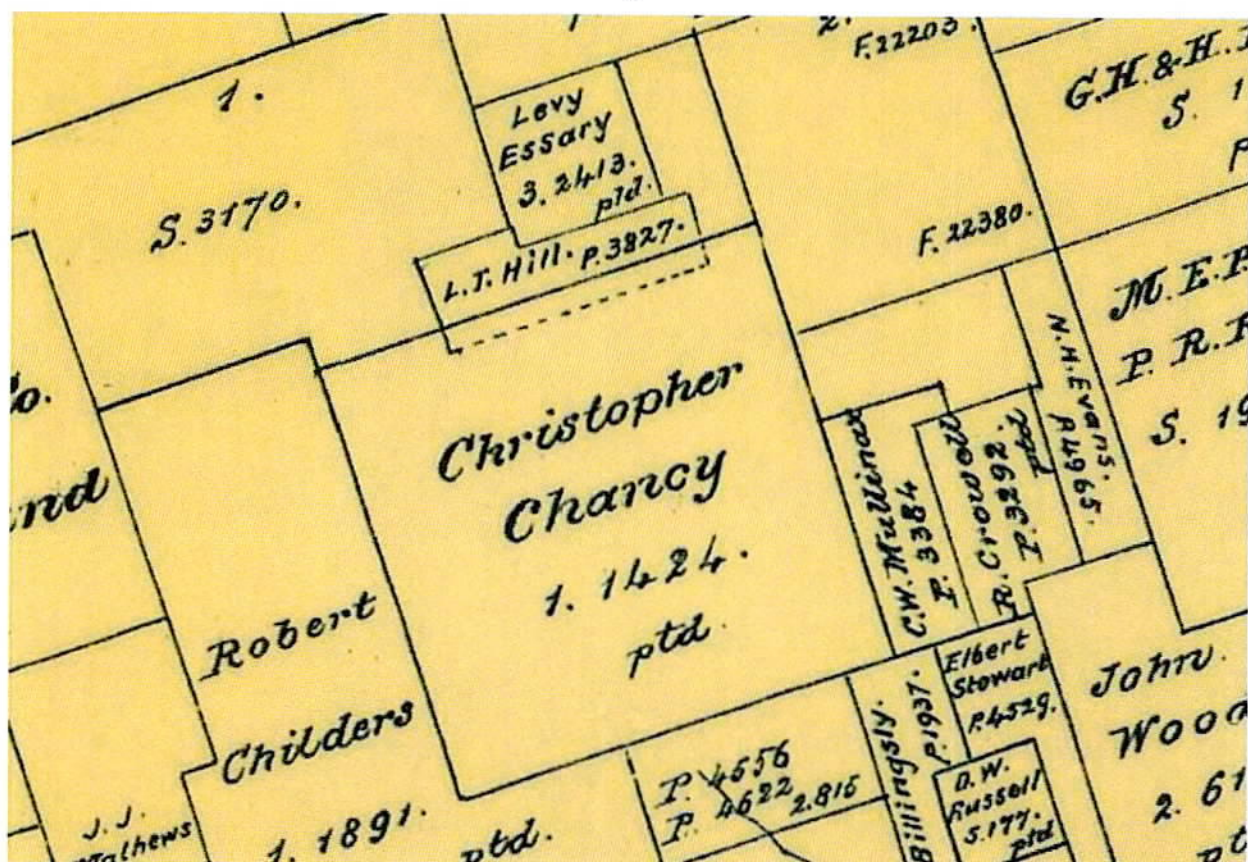
MAP  
"B"





MAP "C" IS A PART OF GENERAL LAND OFFICE DOCUMENT 78425, MILLS COUNTY MAP, DATED APRIL 1888. AGAIN, SHOWS THE L. F. HILL SURVEY (MILAM PREEMPTION-3827, A-379) ADJOINING THE LEVI ESSARY SURVEY (MILAM 3<sup>RD</sup>-2413, A-204) AND CONFLICTING WITH THE NORTH LINE OF THE CHRISTOPHER CHANEY SURVEY (MILAM 1<sup>ST</sup>-1424, A-115).

MAP  
"C"





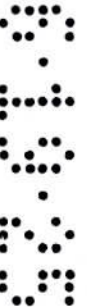
NOVEMBER 28, 1891

I. D. SPAIN SURVEY, MILAM PREEMPTION-5412, A-948. CANCELED  
FIELD NOTES BY W. LIVINGSTON, MILLS COUNTY SURVEYOR.

BEGINNING AT THE NORTHWEST CORNER OF SECTION 2, G. H. & H. RAILROAD COMPANY, A STONE MOUND FROM WHICH A L. O. BEARS N 87° W 67 VARAS, A L. O. BEARS S 84° E 39 VARAS. THENCE S 71° W WITH SOUTH LINE OF SAMUEL PASCHAL SURVEY NUMBER 42 497 VARAS A STONE MOUND AND NORTHEAST CORNER OF THE ESSARY SURVEY. THENCE S 19° E WITH ESSARY EAST BOUNDARY LINE 950 VARAS A STONE MOUND AND ESSARY'S SOUTHEAST CORNER. THENCE N 71° E 154 VARAS A STONE MOUND AND NORTHEAST CORNER OF HILL. THENCE S 19° E 463 VARAS A STONE MOUND IN NORTH LINE OF CHANEY SURVEY. THENCE N 71° E 343 VARAS A STONE MOUND AND CHANEY'S NORTHEAST CORNER. THENCE N 19° W 1413 VARAS TO P.O.B.

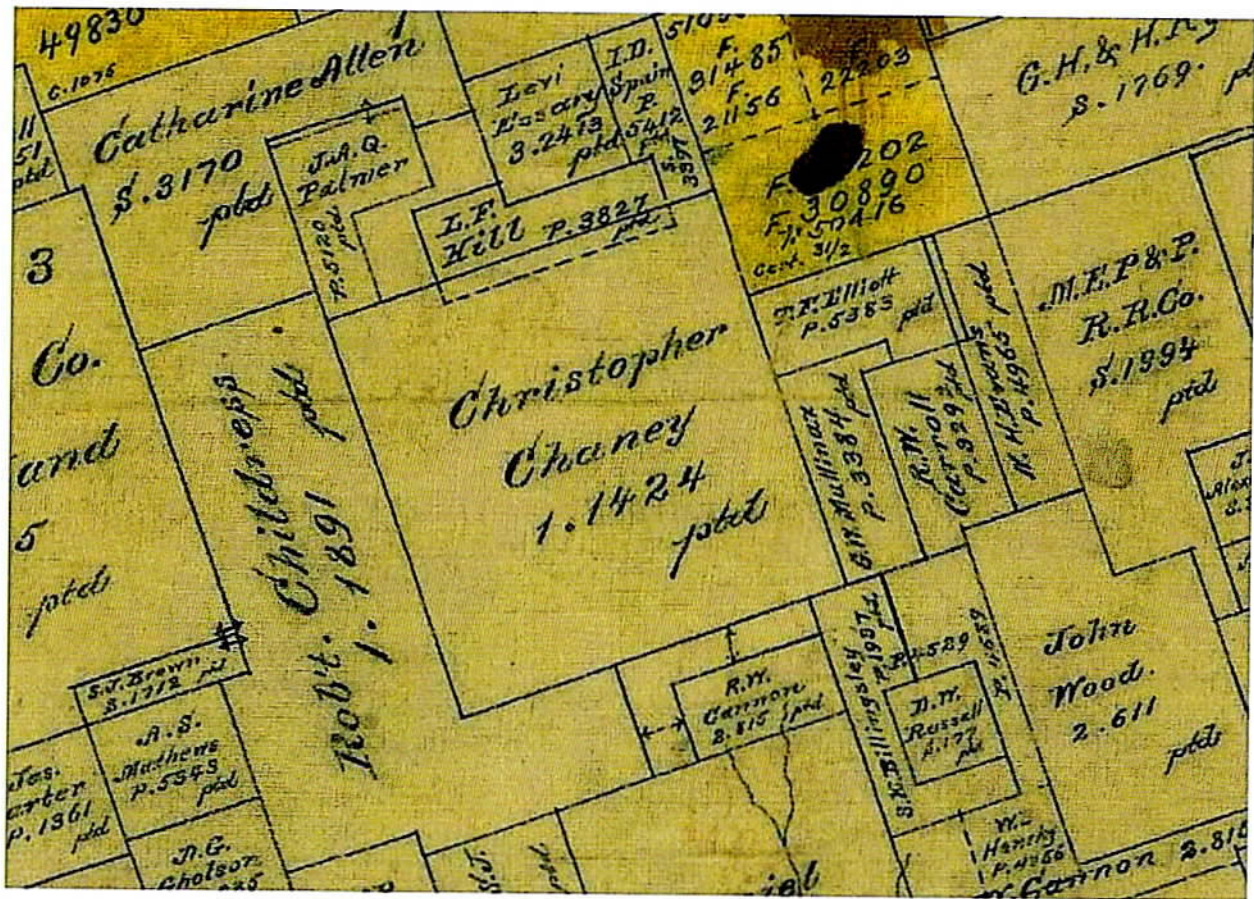
**NOTE:** THIS CALL OF 1413 VARAS IN THE FINAL CALL IS THE SAME DISTANCE AS W. T. SAXON CALLS BETWEEN THE SOUTHWEST CORNER OF THE SAMUEL PASCHAL SURVEY NUMBER 42 (MILAM 1<sup>ST</sup>-1423, A-525), BEING ALSO THE NORTHWEST CORNER OF THE LEVI ESSARY SURVEY (MILAM 3<sup>RD</sup>-2413, A-204), AND THE NORTHERN BOUNDARY OF THE CHRISTOPHER CHANEY SURVEY (MILAM 1<sup>ST</sup>-1424, A-115) IN HIS STATEMENT DATED DECEMBER 20, 1883, LOCATED IN THE L. F. HILL SURVEY (MILAM PREEMPTION-3827, A-379) FILE, BUT IN THE CORRECTED FIELD NOTES FOR THE I. D. SPAIN SURVEY (MILAM PREEMPTION-5412, A-948) DATED JUNE 1896, W. T. SAXON CALLS THIS DISTANCE TO BE 1268 VARAS.

MAP "D" IS A PART OF GENERAL LAND OFFICE DOCUMENT 78440, BEING A MILLS COUNTY MAP DATED JANUARY 1895 (DOCUMENT 66933, DATED FEBRUARY 1899, IS LISTED AS A TRACING OF THIS MAP) SHOWING THE L. F. HILL SURVEY (MILAM PREEMPTION-3827, A-379) ADJOINING THE LEVI ESSARY SURVEY (MILAM 3<sup>RD</sup>-2413, A-204), CONFLICTING WITH THE NORTH LINE OF THE CHRISTOPHER CHANEY SURVEY (MILAM 1<sup>ST</sup>-1424, A-115), AND A GAP BETWEEN THE WEST LINE OF THE L. F. HILL SURVEY (MILAM PREEMPTION-3827, A-379) AND EAST LINE OF THE J. A. Q. PALMER SURVEY (MILAM PREEMPTION-5120, A-763). ON THIS MAP, THE J. A. Q. PALMER SURVEY (MILAM PREEMPTION-5120, A-763) DOES NOT ADJOIN THE L. F. HILL SURVEY (MILAM PREEMPTION-3827, A-379) AS CALLED FOR IN ITS FIELD NOTES LEAVING A GAP (VACANT LAND).





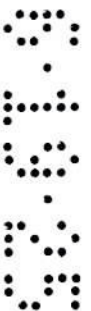
MAP  
"D"



JUNE 25, 1896

I. D. SPAIN SURVEY, MILAM PREEMPTION-5412, A-948. CORRECTED  
FIELD NOTES BY W. S. MILLER, MILLS COUNTY SURVEYOR.

BEGINNING AT A STONE MOUND IN THE SOUTH LINE OF THE SAMUEL PASCHAL SURVEY NUMBER 42 FROM WHICH THE SOUTHEAST CORNER OF THE PASCHAL SURVEY BEARS N 71° E 710 VARAS. THENCE S 71° W 487 VARAS TO THE NORTHEAST CORNER OF THE L. ESSARY SURVEY A STONE MOUND FOR NORTHWEST CORNER OF THIS SURVEY. THENCE S 19° E 950 VARAS TO THE SOUTHEAST CORNER OF THE ESSARY SURVEY A STONE MOUND FOR SOUTHEAST CORNER OF ESSARY AND SOUTHWEST CORNER OF THIS SURVEY. THENCE N 71° E WITH THE NORTH LINE OF THE L. F. HILL SURVEY 154 VARAS TO THE NORTHEAST CORNER OF SAID HILL SURVEY A STONE MOUND FOR A CORNER OF THIS SURVEY. THENCE S 19° E WITH EAST LINE OF SAID HILL SURVEY 318 VARAS TO THE NORTH LINE OF CHRISTOPHER CHANEY SURVEY A STONE MOUND FOR THE LOWER SOUTHWEST CORNER OF THIS SURVEY. THENCE N 71° E 333 VARAS TO THE NORTHEAST CORNER OF SAID CHANEY SURVEY A STONE MOUND FOR SOUTHEAST CORNER OF THIS SURVEY. THENCE N 19° W WITH THE WEST LINE OF SURVEY NUMBER 2, G. H. & H. COMPANY 1268 VARAS TO THE P.O.B.





**NOTE:** THE I. D. SPAIN SURVEY (MILAM PREEMPTION-5412, A-948) PATENTED CALL OF 318 VARAS ALONG THE EAST LINE OF THE L. F. HILL SURVEY (MILAM PREEMPTION-3827, A-379) IS 145 VARAS SHORT OF THE 463 VARAS CALLED FOR AS THE EAST LINE IN THE DESCRIPTION OF THE L. F. HILL SURVEY (MILAM PREEMPTION-3827, A-379).

**SEPTEMBER 6, 1906**

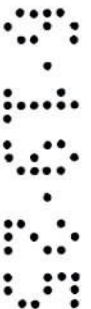
**VESTUS HORTON SURVEY NUMBER 89, SCRAP FILE-7669, A-1361.**

PATENTED FIELD NOTES BY F. M. LONG, MILLS COUNTY DEPUTY SURVEYOR.

BEGINNING AT THE NORTHWEST CORNER OF SUBDIVISION NUMBER 1, G. H. & H. RY. CO. SURVEY, A STONE MOUND, A L. O. N 40° W 145 VARAS. THENCE N 71° E 53 VARAS TO SOUTHWEST CORNER H. A. COVINGTON SURVEY A STONE MOUND. THENCE N 16° W 831 VARAS TO COVINGTON NORTHWEST CORNER A STONE MOUND IN SOUTH LINE OF NUMBER 1, G. H. & H. RY. CO. SURVEY. A MESQUITE "X" BRS N 80° W 115.6 VARAS, A DO S 88 1/2° W, 110 VARAS. THENCE S 71° W 1110 VARAS TO THE SOUTHWEST CORNER OF SAID SECTION 1, A L. O. "=" BEARS N 24° E 100 VARAS. THENCE S 19° E 67 VARAS TO SAM PASCHAL'S SOUTHEAST CORNER A STONE MOUND IN NORTH LINE OF SECTION 2, G. H. & H. RY. CO. SURVEY. THENCE N 71° E 1057 VARAS TO THE NORTHEAST CORNER OF SAID SECTION NUMBER 2, A STONE MOUND. THENCE S 19° E 764 VARAS TO PLACE OF BEGINNING.

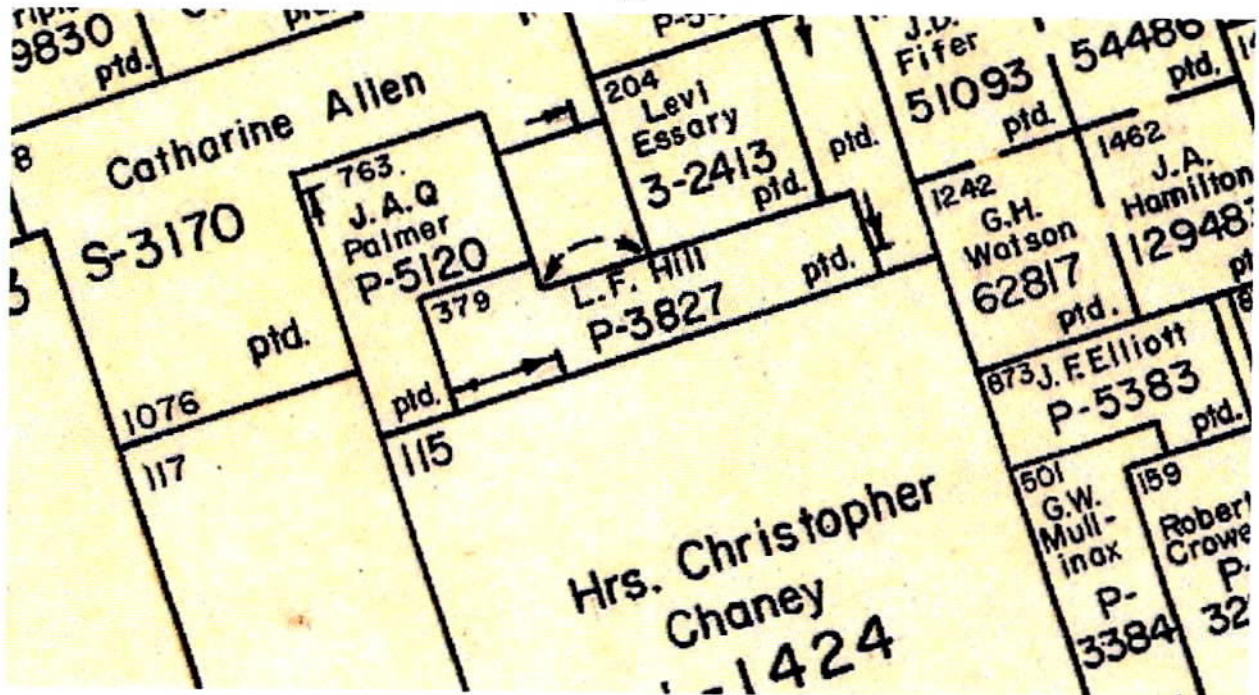
INCLUDED IN THE FILE IS A SKETCH MADE BY SURVEYOR LONG ALONG WITH THE FOLLOWING STATEMENT DATED SEPTEMBER 21, 1906; "THE WITNESS TREE AT SOUTHEAST CORNER OF PASCHAL SURVEY IS GONE AND NO OTHER TREE IN DIRECTIONS CALLED WITHOUT MAKING EAST LINE OF PASCHAL SHORT. I IDENTIFIED THIS CORNER BY A STONE MOUND, A BRANCH N 19° W 512 VARAS, ALSO I FIND EAST LINE OF PASCHAL MARKED IN PLACES, ALSO I FIND SOUTH LINE OF PASCHAL SURVEY MARKED, ALSO I FIND THE NORTHWEST CORNER OF SECTION 2, G. H. & H. SURVEY AN OLD STONE MOUND IN PASCHAL SOUTH LINE. I ALSO FIND THE WEST LINE OF SECTION 1, G. H. & H. TO BE 2080 VARAS INSTEAD OF 2050 VARAS AS CALLED FOR ...."

MAP "E" IS A PART OF GENERAL LAND OFFICE DOCUMENT 95591, MILLS COUNTY MAP DATED MARCH 1976, WITH DIMENSION ARROWS FOR THE LOCATION OF THE WEST LINE OF THE L. F. HILL SURVEY (MILAM PREEMPTION-3827, A-379) AND A VACANT SPACE BETWEEN THE EAST LINE OF THE J. A. Q. PALMER SURVEY (MILAM PREEMPTION-5120, A-763) AND WEST LINE OF THE LEVI ESSARY SURVEY (MILAM 3<sup>RD</sup>-2413, A-204), NORTH OF THE L. F. HILL SURVEY (MILAM PREEMPTION-3827, A-379) AND SOUTH OF THE CATHARINE ALLEN SURVEY NUMBER 1 (MILAM SCRIP-3170, A-8).

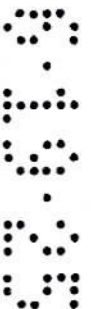




MAP  
"E"

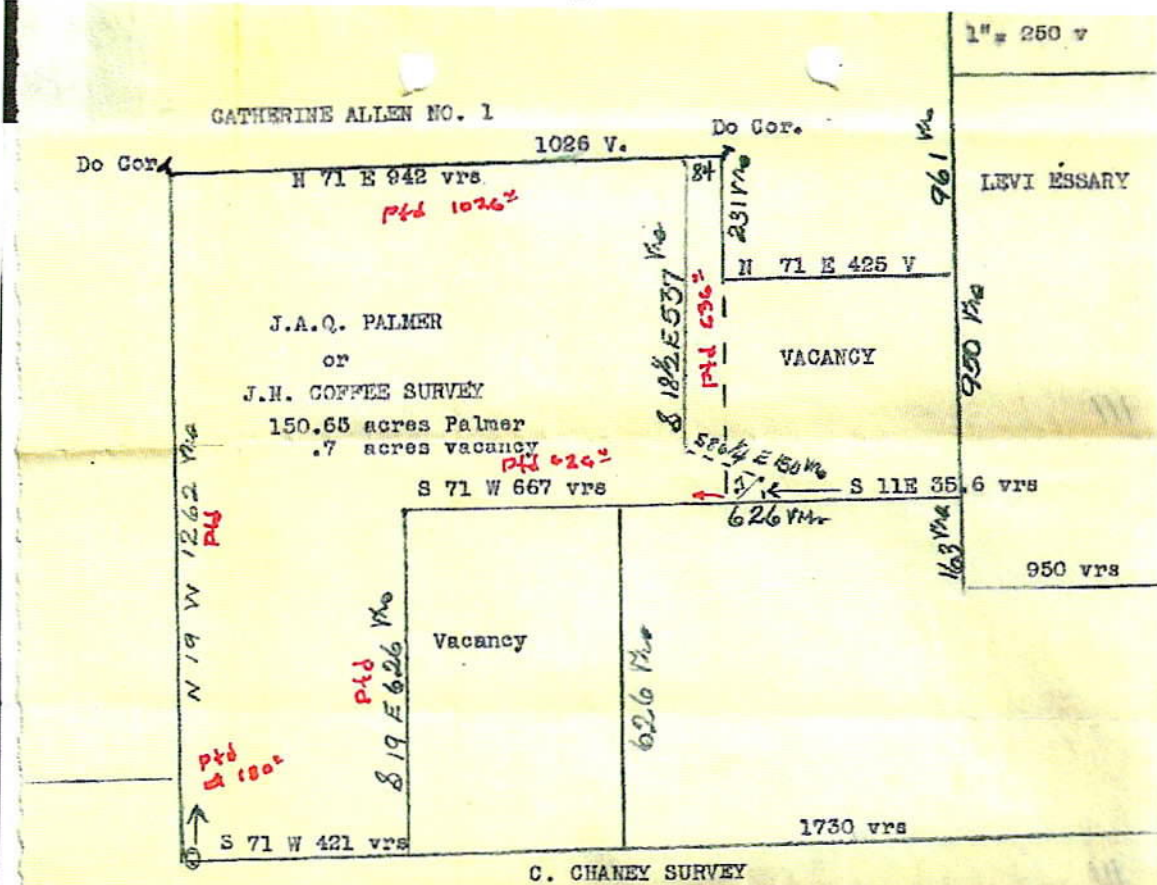


THE ALLEGED NORTHERN VACANT AREA LABELED AS "ALLEGED VACANCY" ON THE ACCOMPANYING SKETCH, IS SHOWN AND DOCUMENTED ON MAPS "A", "D", AND "E" INCLUDED EARLIER IN THIS REPORT AS WELL AS PLAT "F" PREPARED BY COUNTY SURVEYOR J. C. LONG, DATED MARCH 2, 1948. PLAT "F" WAS FOUND IN THE ABSTRACT RECORDS PROVIDED BY OAK AND STAR, LLC, LANDOWNER, AND WE HAVE NO INFORMATION OF THIS PLAT BEING FILED OF RECORD.





PLAT  
"F"



PLAT SHOWING AREA OUT OF THE J.A.Q. PALMER SURVEY under fence and a small vacant area also under fence, being a part of the EPTA BERRY ESTATE, in Mills County, Texas. The above survey was made by me on the ground on March 3, 1948. This the 3rd day of March, 1948.  
J.G. LONG Surveyor of Mills County, Texas.

FIELD NOTES of a survey of 151.35 acres of land made for EPTA BERRY ESTATE. Original grantee J.A.Q. PALMER, Patentee: J.A.Q. Palmer  
Cert Number- issued - 19- SURVEY NO. J.A.Q. PALMER  
Quantity: 150.65 acres, Survey J.A.Q. PALMER  
0.7 acres, Survey V A G A N C Y

Scale 250 vrs per inch. Variation: 10deg 30' East  
Said survey is in Mills County, Texas, situated on the waters of Sims Creek, a tributary of Lampasas river, about 10 miles South 68 deg East of Goldthwaite, Texas.

BEGINNING at the Northwest corner of the Christopher Chaney survey, a stake under fence for the Southwest corner of this tract of land;

THENCE around this tract of land with fence line as follows:

North 19 West 1262 vrs;  
North 71 East 942 vrs;  
South 18 1/2 East 537 vrs;  
South 86 1/4 East 150 vrs;  
South 11 East 35.6 vrs;  
South 71 West 667 vrs;  
South 19 East 626 vrs;

THENCE South 71 West 421 varas;

CHAIN CARRIERS: R.J. Baker and Marvin Nesbit.  
Bearings marked "H"

1948 by J.G. Long, County Surveyor.



## CONCLUSION

THE NORTHERN AND WESTERN LINES IN THIS ALLEGED NORTHERN VACANT AREA ARE DEFINED BY PATENTED SURVEYS MADE BY D. M. HOOKS FOR THE CATHARINE ALLEN SURVEY NUMBER 1 (MILAM SCRIP-3170, A-8) DATED APRIL 25, 1887, AND THE J. A. Q. PALMER SURVEY (MILAM PREEMPTION-5120, A-763) DATED JUNE 25, 1887. IN FIELD NOTES FOR THE CATHARINE ALLEN SURVEY NUMBER 1 (MILAM SCRIP-3170, A-8), MR. HOOKS CALLS TO ADJOIN AN ABANDONED SURVEY IN THE NAME OF J. N. COFFEY, WHICH A MONTH LATER D. M. HOOKS RE-SURVEYS AND RE-NAMES AS THE J. A. Q. PALMER SURVEY (MILAM PREEMPTION-5120, A-763). THE MOST EASTERLY SOUTH LINE OF THE CATHARINE ALLEN SURVEY NUMBER 1 (MILAM SCRIP-3170, A-8) BEGINS AT A POINT 231 VARAS SOUTH OF THE NORTHEAST CORNER OF THE J. N. COFFEY SURVEY (LATER CALLED THE J. A. Q. PALMER SURVEY, MILAM PREEMPTION-5120, A-763), WHERE IT THEN RUNS EASTERLY FOR A DISTANCE OF 425 VARAS BETWEEN THE EAST LINE OF THE J. N. COFFEY SURVEY (LATER CALLED THE J. A. Q. PALMER SURVEY, MILAM PREEMPTION-5120, A-763) TO THE WEST LINE OF THE LEVI ESSARY SURVEY (MILAM 3<sup>RD</sup>-2413, A-204). THIS DEFINES THE EAST-WEST DISTANCE OF THIS ALLEGED NORTHERN VACANT AREA, WITH THIS EASTERN SOUTH LINE OF THE CATHARINE ALLEN SURVEY NUMBER 1 (MILAM SCRIP-3170, A-8) DEFINING THE NORTH LINE OF THIS ALLEGED NORTHERN VACANT AREA. THE SOUTH LINE OF THIS ALLEGED NORTHERN VACANT AREA IS DEFINED BY THE LOCATION OF THE NORTH LINE OF THE L. F. HILL SURVEY (MILAM PREEMPTION-3827, A-379) WHICH HAS MULTIPLE SETS OF FIELD NOTES AS DISCUSSED ABOVE AND IS THE SUBJECT OF MORE DETAIL BELOW. THIS ALLEGED NORTHERN VACANT AREA THUS COVERS ALL THE LAND BETWEEN THE EAST LINE OF THE J. N. COFFEY SURVEY (LATER CALLED THE J. A. Q. PALMER SURVEY, MILAM PREEMPTION-5120, A-763) AND THE WEST LINE OF THE LEVI ESSARY SURVEY (MILAM 3<sup>RD</sup>-2413, A-204) THAT FALLS BETWEEN THE ABOVE-DESCRIBED LINES.

**THE ERSTWHILE WESTERN VACANT AREA** HAS BEEN SHOWN ON VARIOUS SKETCHES IN THE GENERAL LAND OFFICE RECORDS, BUT WE FEEL THE ADJOINING CALLS FOR THE J. N. COFFEY SURVEY (LATER CALLED THE J. A. Q. PALMER SURVEY, MILAM PREEMPTION-5120, A-763) TO THE L. F. HILL SURVEY (MILAM PREEMPTION-3827, A-379) SHOULD BE HONORED, REQUIRING CORRECTED FIELD NOTES FOR THE J. N. COFFEY SURVEY (LATER CALLED THE J. A. Q. PALMER SURVEY, MILAM PREEMPTION-5120, A-763) TO RESOLVE THIS ISSUE.



LOCATION OF THE L. F. HILL SURVEY (MILAM PREEMPTION-3827, A-379)  
AS CITED ABOVE REQUIRES THE CONSIDERATIONS BELOW:

1: BASED UPON FIELD NOTES BY W. T. SAXON DATED DECEMBER 20, 1883, THE PATENTED BEGINNING CORNER OF THE L. F. HILL SURVEY (MILAM PREEMPTION-3827, A-379) IS AN ELL CORNER OF THE L. F. HILL SURVEY (MILAM PREEMPTION-3827, A-379) AND CALLS TO ADJOIN THE SOUTHWEST CORNER OF THE LEVI ESSARY SURVEY (MILAM 3<sup>RD</sup>-2413, A-204).

2: THE NORTH LINE OF THE L. F. HILL SURVEY (MILAM PREEMPTION-3827, A-379) CALLS TO RUN N 71° E, PARTLY ALONG THE SOUTH LINE OF THE LEVI ESSARY SURVEY (MILAM 3<sup>RD</sup>-2413, A-204) FOR A CALLED DISTANCE OF 1104 VARAS TO A NORTHEAST CORNER.

3: THE EAST LINE OF THE L. F. HILL SURVEY (MILAM PREEMPTION-3827, A-379) CALLS TO RUN S 19° E 463 VARAS TO THE NORTH LINE OF THE CHRISTOPHER CHANEY SURVEY (MILAM 1<sup>ST</sup>-1424, A-115). THE PATENTED CALL FOR A COMMON LINE OF THE I. D. SPAIN SURVEY (MILAM PREEMPTION-5412, A-948) BY W. S. MILLER IN JUNE 1896 CALLS THIS DISTANCE TO BE 318 VARAS (PRIOR CANCELED FIELD NOTES BY W. LIVINGSTON DATED NOVEMBER 1891 CALLS THIS DISTANCE TO BE 463 VARAS). IN A SURVEYOR'S STATEMENT DATED DECEMBER 20, 1883, LOCATED IN THE GENERAL LAND OFFICE AND FOUND IN THE L. F. HILL SURVEY (MILAM PREEMPTION-3827, A-379) FILE, MR. SAXON STATES THE DISTANCE FROM THE NORTHWEST CORNER OF THE LEVI ESSARY SURVEY (MILAM 3<sup>RD</sup>-2413, A-204) [BEING COMMON WITH THE SOUTHWEST CORNER OF THE SAMUEL PASCHAL SURVEY NUMBER 42 (MILAM 1<sup>ST</sup>-1423, A-525)] TO THE NORTH LINE OF THE CHRISTOPHER CHANEY SURVEY (MILAM 1<sup>ST</sup>-1424, A-115), MEASURES 1413 VARAS.

4: FROM THE NORTHEAST CORNER OF THE L. F. HILL SURVEY (MILAM PREEMPTION-3827, A-379) ESTABLISHED ALONG THE SOUTH LINE OF THE LEVI ESSARY SURVEY (MILAM 3<sup>RD</sup>-2413, A-204) WE FIND THE DISTANCE ALONG THE EAST LINE OF THE L. F. HILL SURVEY (MILAM PREEMPTION-3827, A-379) TO THE OCCUPIED NORTH LINE OF THE CHRISTOPHER CHANEY SURVEY (MILAM 1<sup>ST</sup>-1424, A-115) [POINTS "B2-E1"], TO BE SHORT OF THE PATENTED DISTANCE. BASED UPON THIS, THE PATENTED L. F. HILL SURVEY (MILAM PREEMPTION-3827, A-379) IS IN CONFLICT WITH THE OCCUPIED NORTH LINE OF THE CHRISTOPHER CHANEY SURVEY (MILAM 1<sup>ST</sup>-1424, A-115), AND SAID L. F. HILL SURVEY (MILAM PREEMPTION-3827, A-379) SHOULD HAVE CORRECTED FIELD NOTES PREPARED.

5: TO CONFIRM THE SOUTH LINE CALL OF THE L. F. HILL SURVEY (MILAM PREEMPTION-3827, A-379) TO ADJOIN THE NORTH LINE OF THE CHRISTOPHER CHANEY SURVEY (MILAM 1<sup>ST</sup>-1424, A-115) FILE WE LOCATED THIS OCCUPIED NORTH LINE (A MORE DETAILED DISCUSSION OF HOW I ESTABLISHED THIS NORTH LINE OF THE CHRISTOPHER CHANEY SURVEY (MILAM 1<sup>ST</sup>-1424, A-115), FOLLOWS LATER IN THIS REPORT). WE FIND A CEDAR POST FOR THE OCCUPIED NORTHEAST CORNER [POINT "B2"] OF



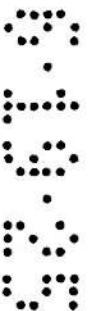
THE CHRISTOPHER CHANEY SURVEY (MILAM 1<sup>ST</sup>-1424, A-115), AT GRID S 7°54'22" W MEASURING 3241.253 VARAS (AS COMPARED TO PATENT CALL OF S 9° W 3350 VARAS) FROM THE SOUTHWEST CORNER OF A SURVEY IN THE NAME OF WM. DUNBAR SURVEY NUMBER 20 (MILAM 2<sup>ND</sup>-493, A-185) [POINT "A"]. HOWEVER, THIS POINT IS NOT THE PATENTED NORTHEAST CORNER OF THE CHRISTOPHER CHANEY SURVEY (MILAM 1<sup>ST</sup>-1424, A-115), AS CALLED FOR BUT THE POINT OF BEGINNING IN THE FIELD NOTES AND CALLED TO BE 238 VARAS S 71° W FROM THE PATENTED NORTHEAST CORNER. CHECKING THIS CORNER, WE FIND IT 2901.8 VARAS NORTH OF A VARYING COURSE F. M. HIGHWAY, THIS HIGHWAY BEING THE COMMONLY HELD SOUTH LINE OF THE CHRISTOPHER CHANEY SURVEY (MILAM 1<sup>ST</sup>-1424, A-115), AS COMPARED TO THE PATENTED EASTERN LINE CALLED DISTANCE OF 2888 VARAS. WE THEN MEASURED FROM THIS OCCUPIED CEDAR POST [POINT "B2"] WESTERLY TO THE OCCUPIED NORTHWEST CORNER OF THE CHRISTOPHER CHANEY SURVEY (MILAM 1<sup>ST</sup>-1424, A-115) [POINT "E1"], AND FIND A TOTAL DISTANCE OF 2955.274 VARAS, COMPARED TO THE PATENTED CALL OF 2888 VARAS.

6: THE WEST BOUNDARY OF THE L. F. HILL SURVEY (MILAM PREEMPTION-3827, A-379) SHOULD BE HELD AT ITS PATENTED CALL OF 626 VARAS S 71° W FROM THE LOCATABLE WESTERN LINE OF THE LEVI ESSARY SURVEY (MILAM 3<sup>RD</sup>-2413, A-204).

**DETERMINING LOCATION OF THE NORTH BOUNDARY LINE  
OF THE CHRISTOPHER CHANEY SURVEY (MILAM 1<sup>ST</sup>-1424, A-115):**

TO FIGURE THE LOCATION OF THE NORTH BOUNDARY LINE OF THE CHRISTOPHER CHANEY SURVEY (MILAM 1<sup>ST</sup>-1424, A-115), WE DETERMINED A ROTATION FACTOR BETWEEN THE PATENTED CALL BEARING AGAINST TODAY'S GRID BEARING. WE USED AN AVERAGE BETWEEN THE BEARING OF THE OCCUPIED SOUTH LINE OF THE WM. DUNBAR SURVEY NUMBER 20 (MILAM 2<sup>ND</sup>-490, A-185) AND THE BEARING OF THE OCCUPIED NORTH LINE OF THE CHRISTOPHER CHANEY SURVEY (MILAM 1<sup>ST</sup>-1424, A-115) [POINTS "B2-E1"], AND IN DOING SO, WE FIND A ROTATION FACTOR OF COUNTERCLOCKWISE 2°24'23".

APPLYING THIS ROTATION TO THE CALLED BEARING OF S 9° W FROM THE BEGINNING CALLS OF BOTH THE CHRISTOPHER CHANEY SURVEY (MILAM 1<sup>ST</sup>-1424, A-115) AND THE SAMUEL PASCHAL SURVEY NUMBER 42 (MILAM 1<sup>ST</sup>-1423, A-525) CAUSES THIS LINE TO NOW BE GRID S 6°35'37" W. HOLDING THIS GRID BEARING AND RUNNING THE PATENTED DISTANCE OF 3350 VARAS FROM THE SOUTHWEST CORNER OF THE WM. DUNBAR SURVEY NUMBER 20 (MILAM 2<sup>ND</sup>-490, A-185) [POINT "A"], WE CREATE A POINT [POINT "B"] FOR THE POINT OF BEGINNING OF THE CHRISTOPHER CHANEY SURVEY (MILAM 1<sup>ST</sup>-1424, A-115). FROM THIS POINT [POINT "B"], WE RUN NORTHEAST ALONG THE CALCULATED GRID BEARING ESTABLISHED FOR THE NORTH LINE OF THE CHRISTOPHER CHANEY SURVEY (MILAM 1<sup>ST</sup>-1424,



97454(21)



A-115) FOR THE PATENTED CALL DISTANCE OF 238 VARAS TO CREATE A POINT [POINT "B1"], THIS BEING THE CALLED PATENTED NORTHEAST CORNER OF THE CHRISTOPHER CHANEY SURVEY (MILAM 1<sup>ST</sup>-1424, A-115). WE FIND THIS POINT [POINT "B1"] TO BEAR 284.472 VARAS S 83°48' E FROM THE OCCUPIED NORTHEAST CORNER OF THE CHRISTOPHER CHANEY SURVEY (MILAM 1<sup>ST</sup>-1424, A-115) [POINT "B2"] AND WE FIND THIS COMPUTED POINT OF BEGINNING OF THE CHRISTOPHER CHANEY SURVEY (MILAM 1<sup>ST</sup>-1424, A-115) [POINT "B"] TO BE 1428.156 VARAS PERPENDICULAR TO AND SOUTH OF THE SOUTH LINE OF THE SAMUEL PASCHAL SURVEY NUMBER 42 (MILAM 1<sup>ST</sup>-1423, A-525), WHERE SURVEYOR W. T. SAXON IN HIS FIELD REPORT AND SKETCH DATED DECEMBER 20, 1883, CALLS THIS DISTANCE TO BE 1413 VARAS. FROM THIS, WE FEEL MR. SAXON WAS HOLDING THE NORTH LINE OF THE CHRISTOPHER CHANEY SURVEY (MILAM 1<sup>ST</sup>-1424, A-115) CLOSE TO ITS PATENTED POSITION PER A 3350 VARA LONG TIE LINE.

NEXT, WE FIND A LINE DRAWN FROM THE SOUTHWEST CORNER OF THE WM. DUNBAR SURVEY NUMBER 20 (MILAM 2<sup>ND</sup>-490, A-185) [POINT "A"] TO THE FENCE CORNER [POINT "B2"], NOW BEING THE OCCUPIED NORTHEAST CORNER OF THE CHRISTOPHER CHANEY SURVEY (MILAM 1<sup>ST</sup>-1424, A-115), TO BE CLOSE TO RUNNING THROUGH THE FENCE CORNER [POINT "C"], THIS FENCE CORNER [POINT "C"] BEING THE OCCUPIED SOUTHEAST CORNER OF THE SAMUEL PASCHAL SURVEY NUMBER 42 (MILAM 1<sup>ST</sup>-1423, A-525). THIS FENCE CORNER [POINT "C"] BEING AT A DISTANCE OF 1722.82 VARAS (AS COMPARED TO THE CALLED DISTANCE OF 1700 VARAS) FROM THE SOUTHWEST CORNER OF THE WM. DUNBAR SURVEY NUMBER 20 (MILAM 2<sup>ND</sup>-490, A-185), BUT IT IS NOT IN AGREEMENT WITH THE BEARING AS CALLED FOR IN THE FIELD NOTES BY SURVEYOR WILLIAMSON JONES FOR BOTH THE SAMUEL PASCHAL SURVEY NUMBER 42 (MILAM 1<sup>ST</sup>-1423, A-525) AND CHRISTOPHER CHANEY SURVEY (MILAM 1<sup>ST</sup>-1424, A-115).

RUNNING SOUTHWEST ALONG THE OCCUPIED NORTH LINE FROM THE OCCUPIED NORTHEAST CORNER OF THE CHRISTOPHER CHANEY SURVEY (MILAM 1<sup>ST</sup>-1424, A-115) [POINT "B2"] FOR THE PATENTED DISTANCE OF 238 VARAS TO THE CALLED POINT OF BEGINNING [POINT "B3"], WE FIND A GROUP OF SCATTERED ROCKS IN A SMALL DRAIN. WE FIND THIS POINT [POINT "B3"] TO BEAR S 11°26'36" W AT 3364.110 VARAS FROM THE SOUTHWEST CORNER OF THE WM. DUNBAR SURVEY NUMBER 20 (MILAM 2<sup>ND</sup>-490, A-185) [POINT "A"] AS COMPARED TO THE PATENTED DISTANCE OF 3350 VARAS AT A BEARING OF S 9° W.

FINALLY, IF WE BUILD A TRIANGLE WITH SIDE "X" BEING THE LEG FROM THE SOUTHEAST CORNER OF THE SAMUEL PASCHAL SURVEY NUMBER 42 (MILAM 1<sup>ST</sup>-1423, A-525) [POINT "C"] TO THE NORTHEAST CORNER OF THE I. D. SPAIN SURVEY (MILAM PREEMPTION-5412, A-948), SIDE "Y" BEING THE EASTERN LINE OF THE I. D. SPAIN SURVEY (MILAM



PREEMPTION-5412, A-948), AND SIDE "Z" BEING FROM THE SOUTHEAST CORNER OF THE SAMUEL PASCHAL SURVEY NUMBER 42 (MILAM 1<sup>ST</sup>-1423, A-525) [POINT "C"] TO THE CALLED POINT OF BEGINNING OF THE CHRISTOPHER CHANEY SURVEY (MILAM 1<sup>ST</sup>-1424, A-115) [POINT "B"] (ALL BASED UPON THE FIELD NOTES MADE BY WILLIAMSON JONES), AND USING THE HYPOTENUSE OF THIS TRIANGLE, WE FIND SIDE "Y" OF THIS TRIANGLE TO CALCULATE AS 1457 VARAS, WHILE THE CANCELED FIELD NOTES FOR THE EAST LINE OF THE I. D. SPAIN SURVEY (MILAM PREEMPTION-5412, A-948) IS CALLED TO BE 1413 VARAS, WITH THE SAME LINE BEING PATENTED AS 1268 VARAS, YET AGAIN RAISING QUESTIONS AS TO THE LOCATION OF THE NORTH LINE OF THE CHRISTOPHER CHANEY SURVEY (MILAM 1<sup>ST</sup>-1424, A-115).

BASED UPON THE DISCUSSION AND FACTS REPORTED ABOVE, I BELIEVE THE L. F. HILL SURVEY (MILAM PREEMPTION-3827, A-379) SHOULD BE PLACED ON THE GROUND HONORING THE L. F. HILL SURVEY'S (MILAM PREEMPTION-3827, A-379) CALL TO BEGIN AT THE SOUTHWEST CORNER OF THE LEVI ESSARY SURVEY (MILAM 3<sup>RD</sup>-2413, A-204) AND FOLLOW THE LEVI ESSARY SURVEY'S (MILAM 3<sup>RD</sup>-2413, A-204) SOUTH LINE CONTINUING EAST FOR THE CALLED DISTANCE OF 1104 VARAS TO ESTABLISH THE MOST EASTERLY NORTHEAST CORNER OF THE L. F. HILL SURVEY (MILAM PREEMPTION-3827, A-379). THE L. F. HILL SURVEY (MILAM PREEMPTION-3827, A-379) SHOULD THEN RUN SOUTHERLY UNTIL THE L. F. HILL SURVEY'S (MILAM PREEMPTION-3827, A-379) EAST LINE INTERSECTS THE OCCUPIED NORTH LINE OF THE CHRISTOPHER CHANEY SURVEY (MILAM 1<sup>ST</sup>-1424, A-115) FOR THE L. F. HILL SURVEY'S (MILAM PREEMPTION-3827, A-379) SOUTHEAST CORNER. THE L. F. HILL SURVEY (MILAM PREEMPTION-3827, A-379) THEN SHOULD RUN WEST ALONG THE OCCUPIED NORTH LINE OF THE CHRISTOPHER CHANEY SURVEY (MILAM 1<sup>ST</sup>-1424, A-115) FOR THE CALLED DISTANCE OF 1730 VARAS TO A POINT FOR THE SOUTHWEST CORNER OF THE L. F. HILL SURVEY (MILAM PREEMPTION-3827, A-379). THE L. F. HILL SURVEY (MILAM PREEMPTION-3827, A-379) THEN WOULD TURN NORTHERLY FOR A DISTANCE OF 514.968 VARAS TO THE ESTABLISHED NORTHWEST CORNER OF THE L. F. HILL SURVEY (MILAM PREEMPTION-3827, A-379), WHICH DOES FALL AT 626 VARAS NORTH OF SAXON'S NORTHERN BOUNDARY CONSTRUCTION OF THE CHRISTOPHER CHANEY SURVEY (MILAM 1<sup>ST</sup>-1424, A-115). WE THEN RUN N 71° E 626 VARAS TO THE WEST BOUNDARY LINE OF THE LEVI ESSARY SURVEY (MILAM 3<sup>RD</sup>-2413, A-204) AND THEN S 19° E 163 VARAS ALONG THE WEST LINE OF THE LEVI ESSARY SURVEY (MILAM 3<sup>RD</sup>-2413, A-204) BACK TO THE PLACE OF BEGINNING, THIS HOLDS THE CALLS FOR THE ADJOINING SURVEYS ALONG THE L. F. HILL SURVEY'S (MILAM PREEMPTION-3827, A-379) NORTH AND SOUTH LINES. FOLLOWING THIS CONSTRUCTION, THIS WOULD REQUIRE CORRECTED FIELD NOTES FOR THE OCCUPIED 125.539 SURFACE ACRES RATHER THAN FOR THE ORIGINAL CALLED 160 ACRES.



THE J. A. Q. PALMER SURVEY (MILAM PREEMPTION-5120, A-763) SHOULD BE PLACED ON THE GROUND USING ITS PATENTED CALL TO BEGIN AT THE NORTHWEST CORNER OF THE CHRISTOPHER CHANEY SURVEY (MILAM 1<sup>ST</sup>-1424, A-115), HONORING THE CALLS FOR THE WESTERN AND NORTHERN LINES, THEN WE SHOULD IGNORE THE CALLED FOR BEARINGS AND DISTANCES AND INSTEAD HONOR THE CALLS TO ADJOIN THE L. F. HILL SURVEY (MILAM PREEMPTION-3827, A-379) AS SHOWN ON THE SKETCH BY MR. HOOKS DATED APRIL 1887 AND ATTACHED TO HIS FIELD NOTES FOR THE CATHARINE ALLEN SURVEY NUMBER 1 (MILAM SCRIP-3170, A-8). THIS CONSTRUCTION WILL REQUIRE CORRECTED FIELD NOTES FOR THE J. A. Q. PALMER SURVEY (MILAM PREEMPTION-5120, A-763) FOR THE OCCUPIED 212.588 SURFACE ACRES RATHER THAN THE ORIGINAL PATENTED 160 ACRES. THIS WILL BE CONTRARY TO THE MILLS COUNTY 1887 AND 1895 COUNTY MAPS DISCUSSED ABOVE, BUT AS SHOWN ON GENERAL LAND OFFICE SKETCH NUMBER 7, DATED JUNE 28, 1993, PREPARED BY JOAN KILPATRICK, AND THE GENERAL LAND OFFICE MILLS COUNTY MAP DATED 1976.

THIS PART OF MILLS COUNTY HAS HISTORICALLY BEEN AN AREA WHERE MANY ORIGINAL SURVEYS HAVE BEEN DIFFICULT TO PLACE BACK ON THE GROUND, WHETHER DUE TO LACK OF FINDING ORIGINAL CORNERS OR TO THE NUMEROUS SETS OF CORRECTED FIELD NOTES WRITTEN ON MANY OF THE SURVEYS. WE PRESENT THIS SURVEY RESOLUTION TO CORRECT THE ISSUES DISCUSSED ABOVE.

SURVEYED BETWEEN JANUARY 2023 AND AUGUST 2024.

RESPECTFULLY SUBMITTED,



MAXEY SHEPPARD,

LICENSED STATE LAND SURVEYOR, RPLS 3697

